

# LANDMARK OAKS



## 2921 LANDMARK PLACE, MADISON, WI 53713

Landmark Oaks is a five-story, 110,000 GSF, Class-A office building that was completed in 2018. Situated high upon a mature wooded lot, Landmark Oaks offers an abundance of green space and breathtaking views of the Arboretum, Capitol, and surrounding lakes. The building is conveniently located on a highly visible stretch of the central beltline (135,000+ cars daily) near bike and pedestrian paths, City of Madison bus lines, walking distance to various amenities, and only a ten minute drive to Downtown, East, or West Madison.



MIG Commercial Real Estate | 3001 W. Beltline Hwy Suite 202 | 608.509.1000 | [www.migllc.biz](http://www.migllc.biz)  
For leasing inquiries: Brandi Zander | [bzander@migllc.biz](mailto:bzander@migllc.biz)



# SPACE FOR LEASE

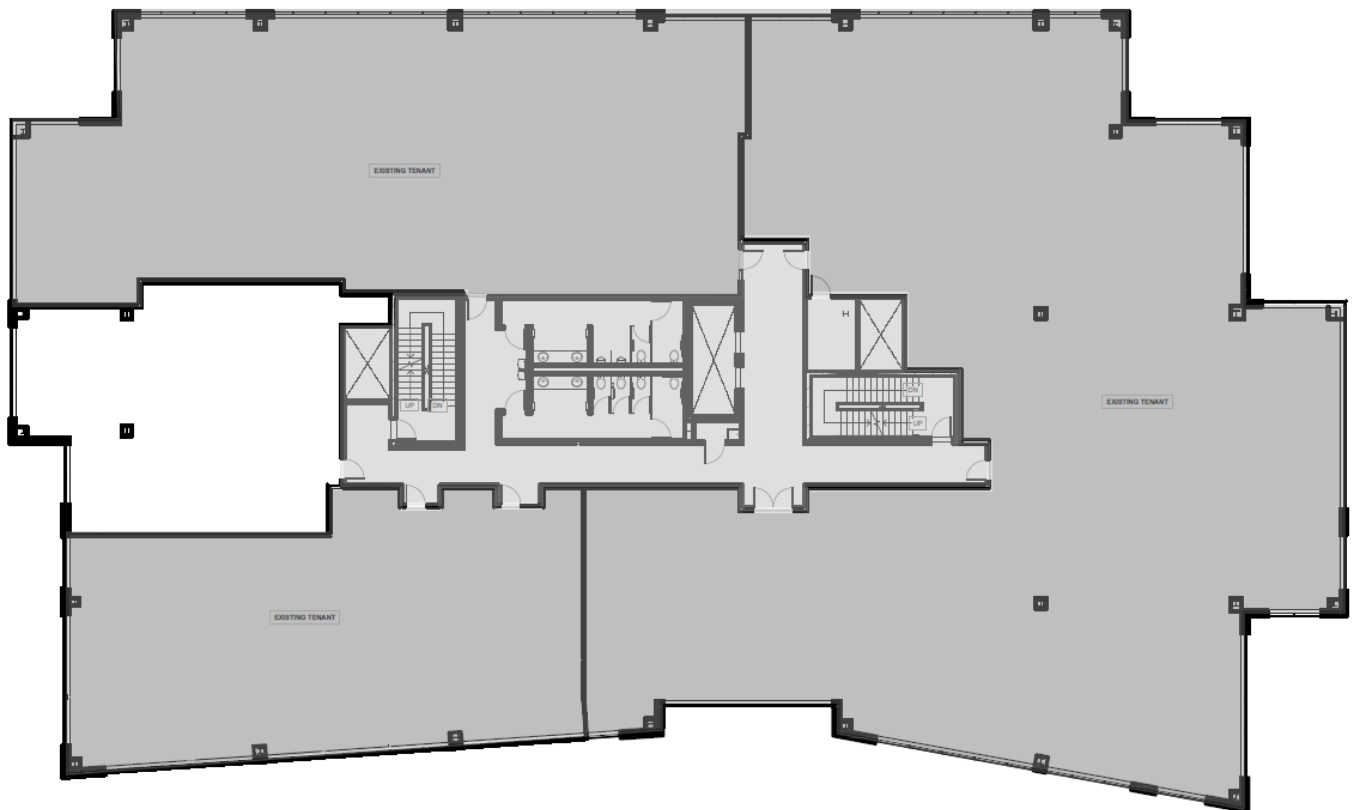
2921 Landmark Place, Madison, WI

## SECOND FLOOR

1,761 USF / 1,981 RSF

□AVAILABLE

\$13.50/RSF NNN + \$60/USF TI ALLOWANCE



Brandi Zander  
VP of Brokerage & Development  
608-509-1002  
bzander@migllc.biz

MIG Commercial Real Estate  
3001 West Beltline Hwy, #202  
Madison, WI 53713  
www.migllc.biz



# SPACE FOR LEASE

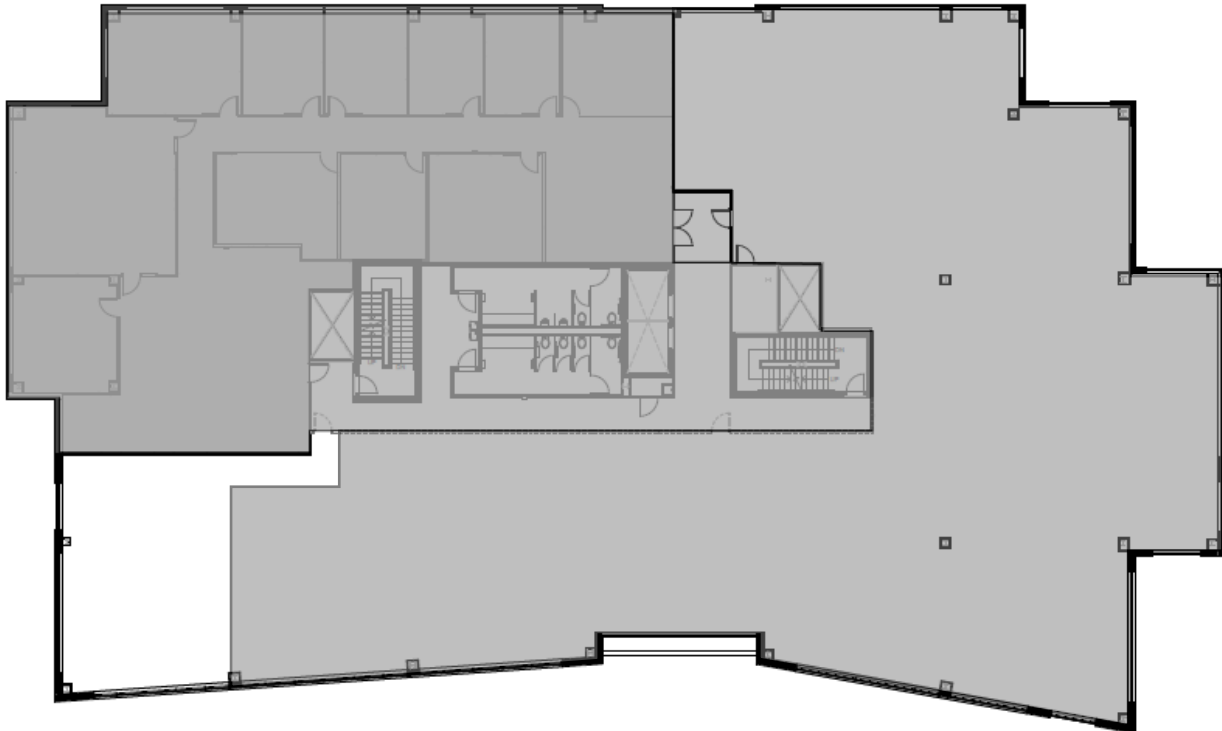
2921 Landmark Place, Madison, WI

## FOURTH FLOOR

1,398 USF / 1,573 RSF

□ AVAILABLE

\$15.00/RSF NNN + \$60/USF TI ALLOWANCE



Brandi Zander  
VP of Brokerage & Development  
608-509-1002  
bzander@migllc.biz

MIG Commercial Real Estate  
3001 West Beltline Hwy, #202  
Madison, WI 53713  
www.migllc.biz



# SPACE FOR LEASE

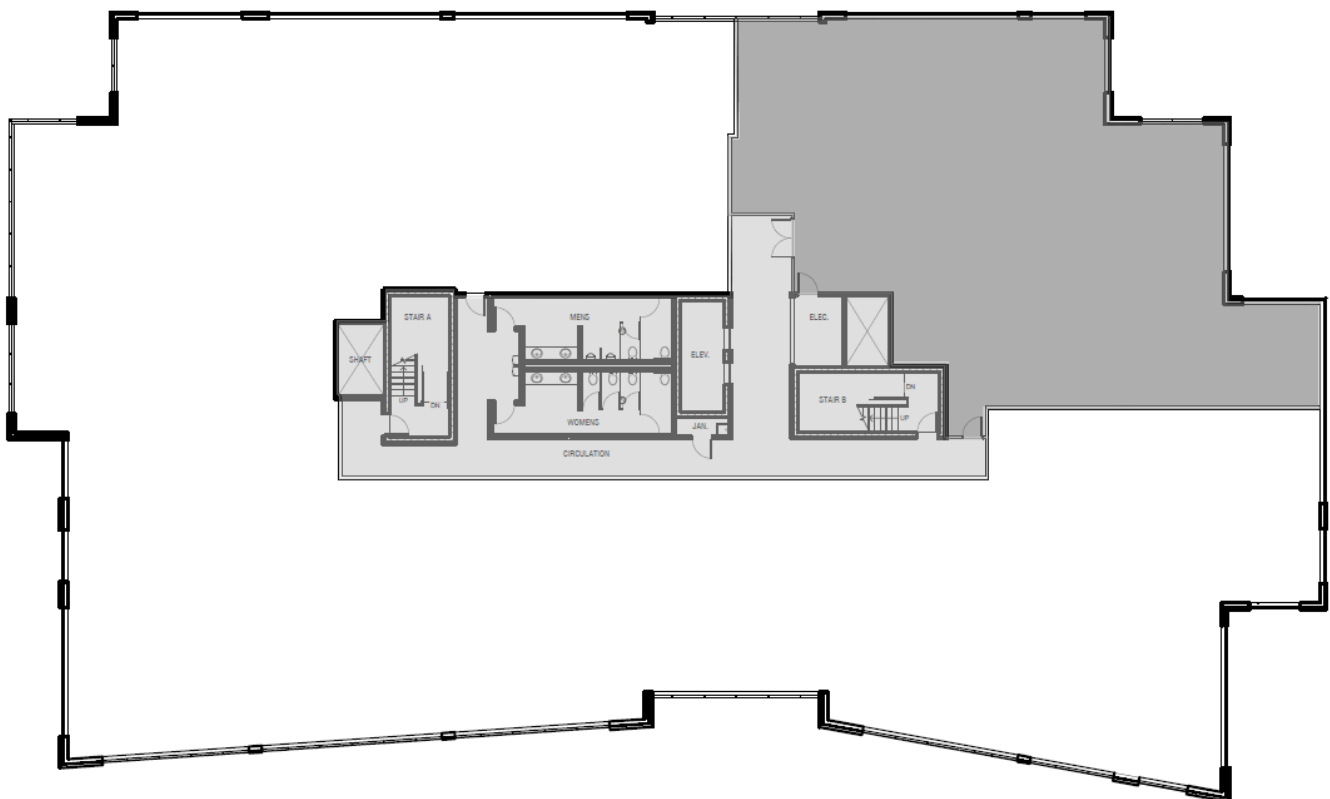
2921 Landmark Place, Madison, WI

## FIFTH FLOOR

14,352 USF / 16,146 RSF  
(DEMISABLE)

□ AVAILABLE

\$16.00/RSF NNN + \$60/USF TI ALLOWANCE



Brandi Zander  
VP of Brokerage & Development  
608-509-1002  
bzander@migllc.biz

MIG Commercial Real Estate  
3001 West Beltline Hwy, #202  
Madison, WI 53713  
www.migllc.biz