

# FOR LEASE

## OLD SAUK TRAILS PARK

1001 Fourier Drive  
Madison, WI 53717



### Property Profile

West Madison location in Old Sauk Trails Business Park with Beltline frontage

Quick Beltline access via Old Sauk Road or Greenway Boulevard

Monument signage available and potential building signage available facing the Beltline

Common atrium open to the second floor with skylights allowing in natural light

Mix of suite sizes and layouts with open areas, private offices, and conference rooms

Zoning: Suburban Employment Center (SEC)

Near restaurants, hotels, childcare, and shopping

#### **For More Information Please Contact:**

**Ruedebusch Commercial Investments**  
4605 Dovetail Drive  
Madison, WI 53704  
[www.ruedebusch.com/brokerage](http://www.ruedebusch.com/brokerage)

**Thomas G. Phillips, CCIM, SIOR**  
Office: 608.243.9070  
Mobile: 608.770.4950  
E-mail: [tomp@ruedebusch.com](mailto:tomp@ruedebusch.com)

The information provided herein has been obtained from sources deemed reliable and is believed to be accurate. However, no guarantee, warranty or representation is made as to the accuracy thereof. The information provided herein is subject to correction or change without notice.

# FOR LEASE

## OLD SAUK TRAILS PARK

1001 Fourier Drive  
Madison, WI 53717



### Leasing Information

#### Space Available:

Building offers multiple space layout and square footage options  
(see included plans)

|                    |                                   |
|--------------------|-----------------------------------|
| <u>First Floor</u> | <u>Approximate Square Footage</u> |
| Suite 102          | 1,845 RSF                         |

|                     |                                   |
|---------------------|-----------------------------------|
| <u>Second Floor</u> | <u>Approximate Square Footage</u> |
| Suite 200           | 5,082 RSF                         |

#### Date Available:

Suite 102 Currently Available

Suite 200 Available in 90 days

#### Net Base Rent:

\$11.95 per Rentable Square Foot Leased

#### Building Operating Expenses (NNN):

In addition to the Net Base Rent tenants pay proportionate share of the building real estate taxes, building insurance, common area maintenance (CAM) costs. Estimated 2021 expenses per Rentable Square Foot are:

|                                       |               |
|---------------------------------------|---------------|
| Real Estate Taxes:                    | \$2.10        |
| Building Insurance:                   | \$0.15        |
| <u>CAM (Exterior &amp; Interior):</u> | <u>\$2.50</u> |
| TOTAL per RSF:                        | \$4.75        |

#### Utilities:

Tenants responsible for proportionate share of building utilities  
(gas, electric, water, sewer)

#### Leased Space Cleaning:

Tenants responsible for leased space cleaning.



#### For More Information Please Contact:

Ruedebusch Commercial Investments  
4605 Dovetail Drive  
Madison, WI 53704  
[www.ruedebusch.com/brokerage](http://www.ruedebusch.com/brokerage)

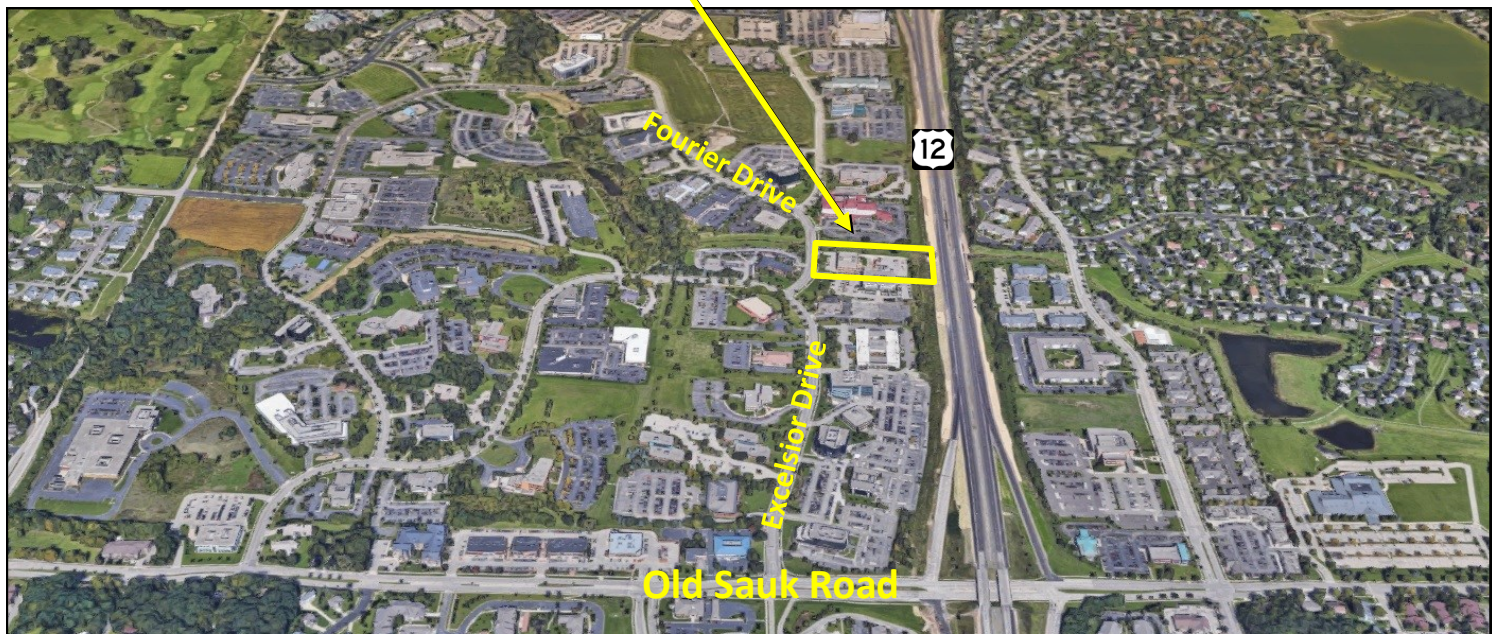
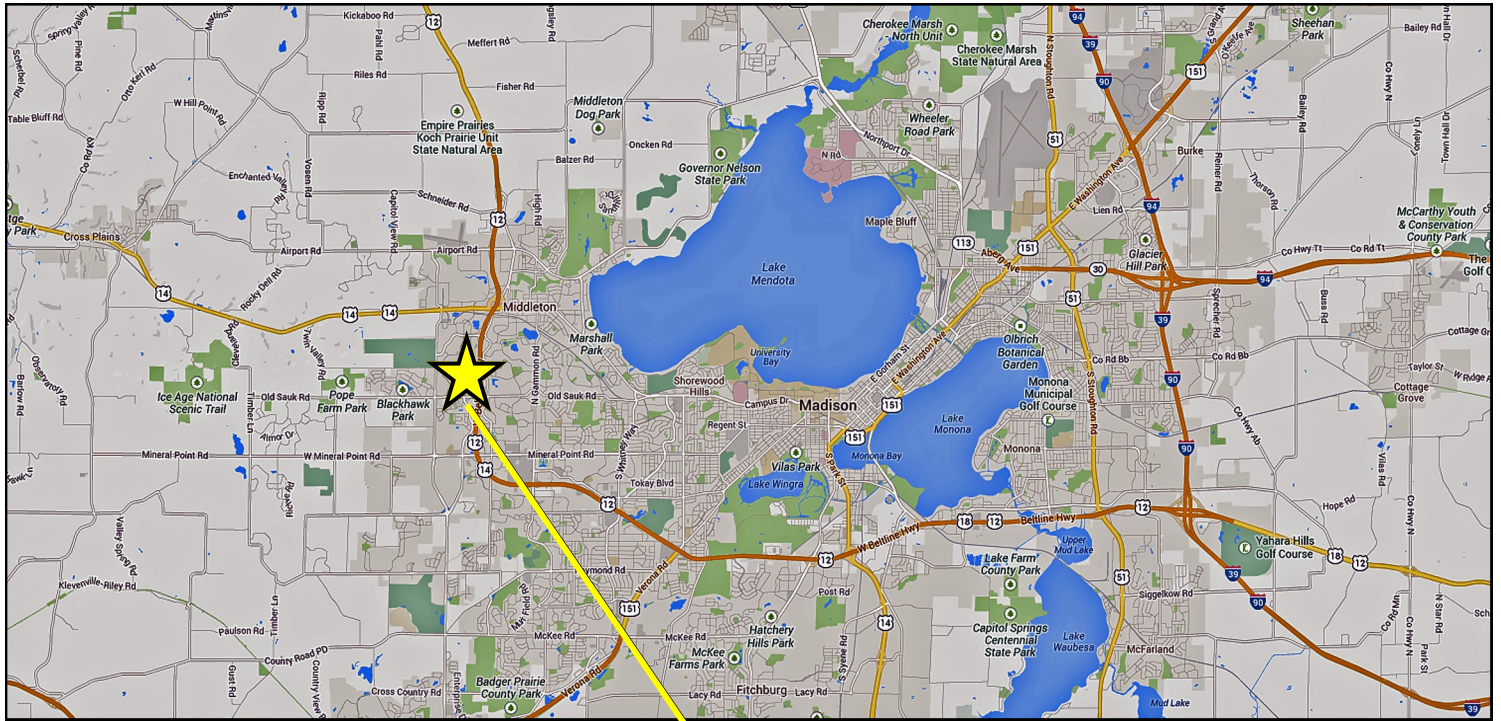
Thomas G. Phillips, CCIM, SIOR  
Office: 608.243.9070  
Mobile: 608.770.4950  
E-mail: [tomp@ruedebusch.com](mailto:tomp@ruedebusch.com)



# FOR LEASE

## OLD SAUK TRAILS PARK

1001 Fourier Drive  
Madison, WI 53717



**For More Information  
Please Contact:**

**RuedeBusch Commercial Investments**  
4605 Dovetail Drive  
Madison, WI 53704  
[www.ruedeBusch.com/brokerage](http://www.ruedeBusch.com/brokerage)

**Thomas G. Phillips, CCIM, SIOR**  
Office: 608.243.9070  
Mobile: 608.770.4950  
E-mail: [tomp@ruedeBusch.com](mailto:tomp@ruedeBusch.com)

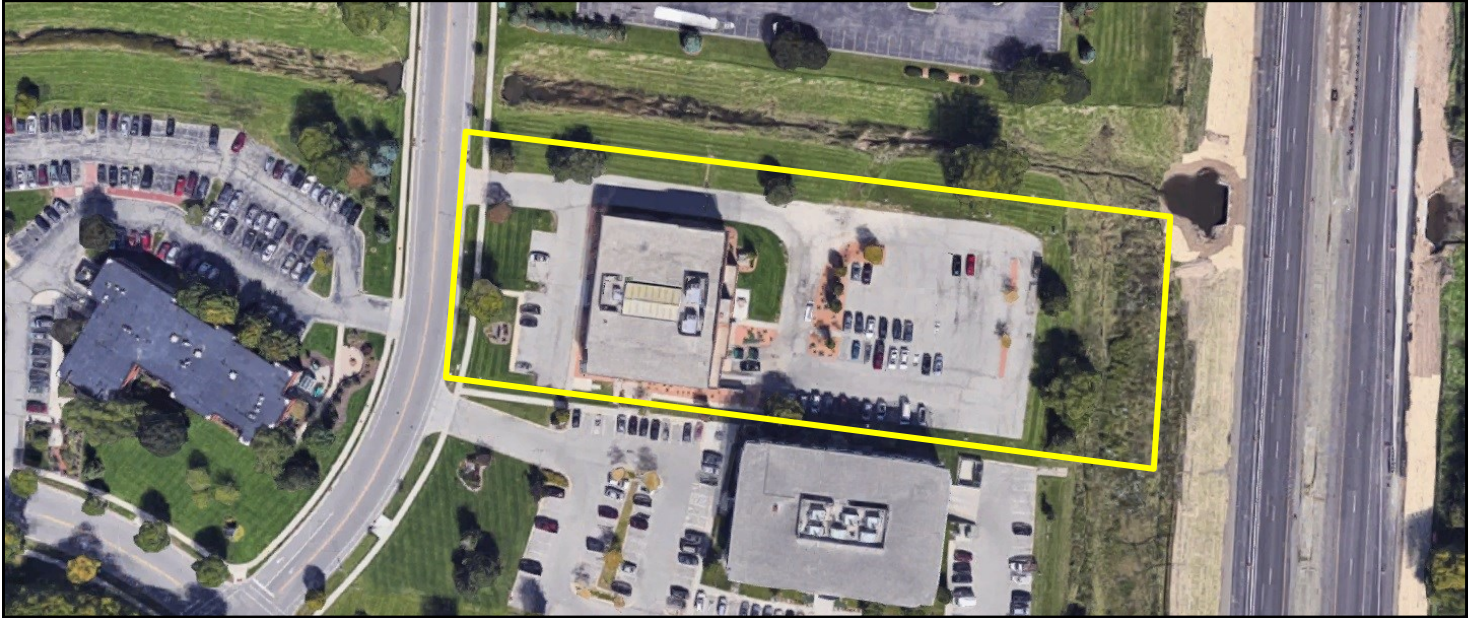
The information provided herein has been obtained from sources deemed reliable and is believed to be accurate. However, no guarantee, warranty or representation is made as to the accuracy thereof. The information provided herein is subject to correction or change without notice.



# FOR LEASE

## OLD SAUK TRAILS PARK

1001 Fourier Drive  
Madison, WI 53717



**For More Information  
Please Contact:**

**RuedeBusch Commercial Investments**  
4605 Dovetail Drive  
Madison, WI 53704  
[www.ruedeBusch.com/brokerage](http://www.ruedeBusch.com/brokerage)

**Thomas G. Phillips, CCIM, SIOR**  
Office: 608.243.9070  
Mobile: 608.770.4950  
E-mail: [tomp@ruedeBusch.com](mailto:tomp@ruedeBusch.com)

The information provided herein has been obtained from sources deemed reliable and is believed to be accurate. However, no guarantee, warranty or representation is made as to the accuracy thereof. The information provided herein is subject to correction or change without notice.



# FOR LEASE

## OLD SAUK TRAILS PARK

1001 Fourier Drive  
Madison, WI 53717



**For More Information  
Please Contact:**

**Ruedebusch Commercial Investments**  
4605 Dovetail Drive  
Madison, WI 53704  
[www.ruedebusch.com/brokerage](http://www.ruedebusch.com/brokerage)

**Thomas G. Phillips, CCIM, SIOR**  
Office: 608.243.9070  
Mobile: 608.770.4950  
E-mail: [tomp@ruedebusch.com](mailto:tomp@ruedebusch.com)

The information provided herein has been obtained from sources deemed reliable and is believed to be accurate. However, no guarantee, warranty or representation is made as to the accuracy thereof. The information provided herein is subject to correction or change without notice.

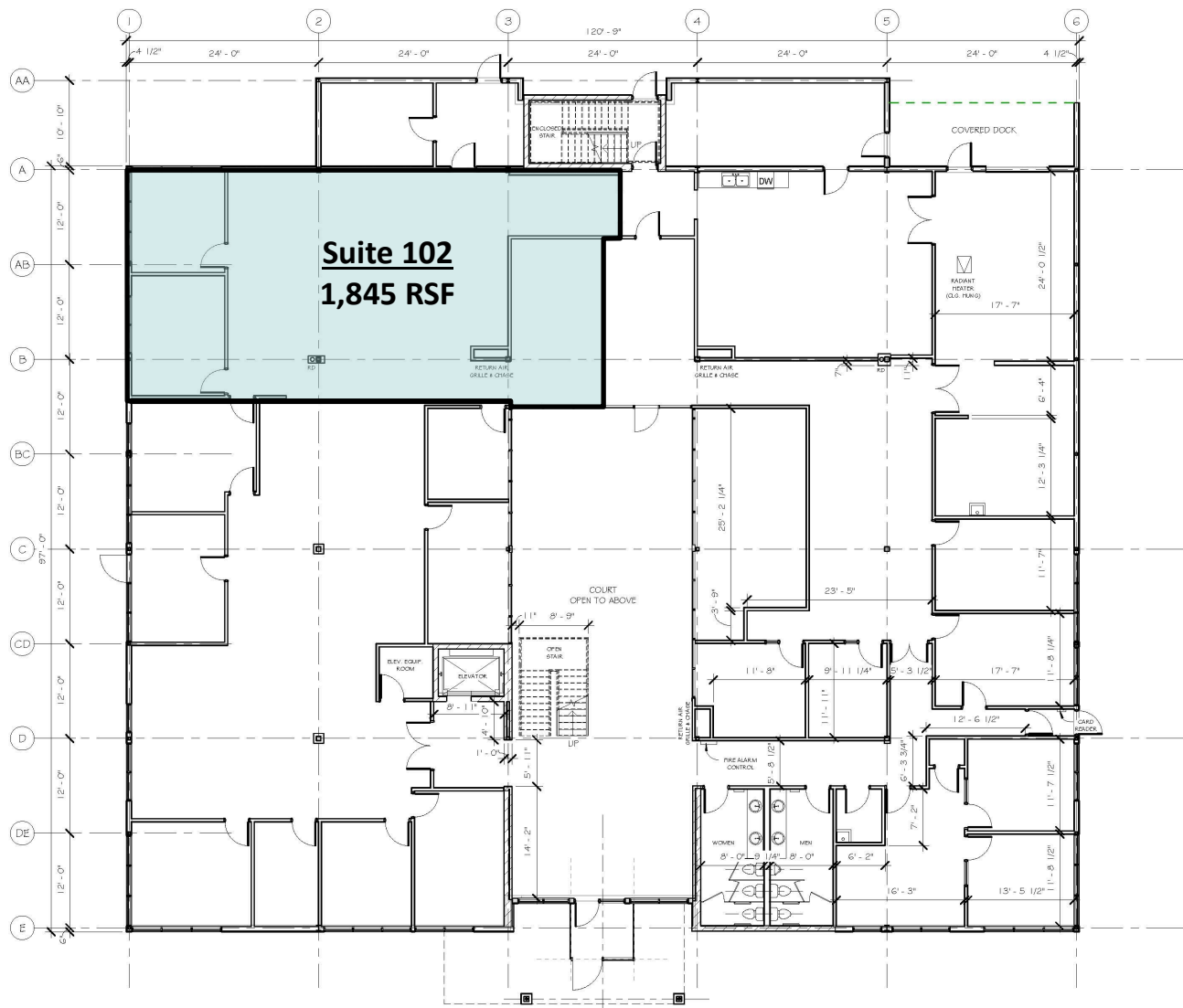
# FOR LEASE

## OLD SAUK TRAILS PARK

1001 Fourrier Drive  
Madison, WI 53717



### First Floor



**For More Information  
Please Contact:**

**Ruedebusch Commercial Investments**  
4605 Dovetail Drive  
Madison, WI 53704  
[www.ruedebusch.com/brokerage](http://www.ruedebusch.com/brokerage)

**Thomas G. Phillips, CCIM, SIOR**  
Office: 608.243.9070  
Mobile: 608.770.4950  
E-mail: [tomp@ruedebusch.com](mailto:tomp@ruedebusch.com)

The information provided herein has been obtained from sources deemed reliable and is believed to be accurate. However, no guarantee, warranty or representation is made as to the accuracy thereof. The information provided herein is subject to correction or change without notice.

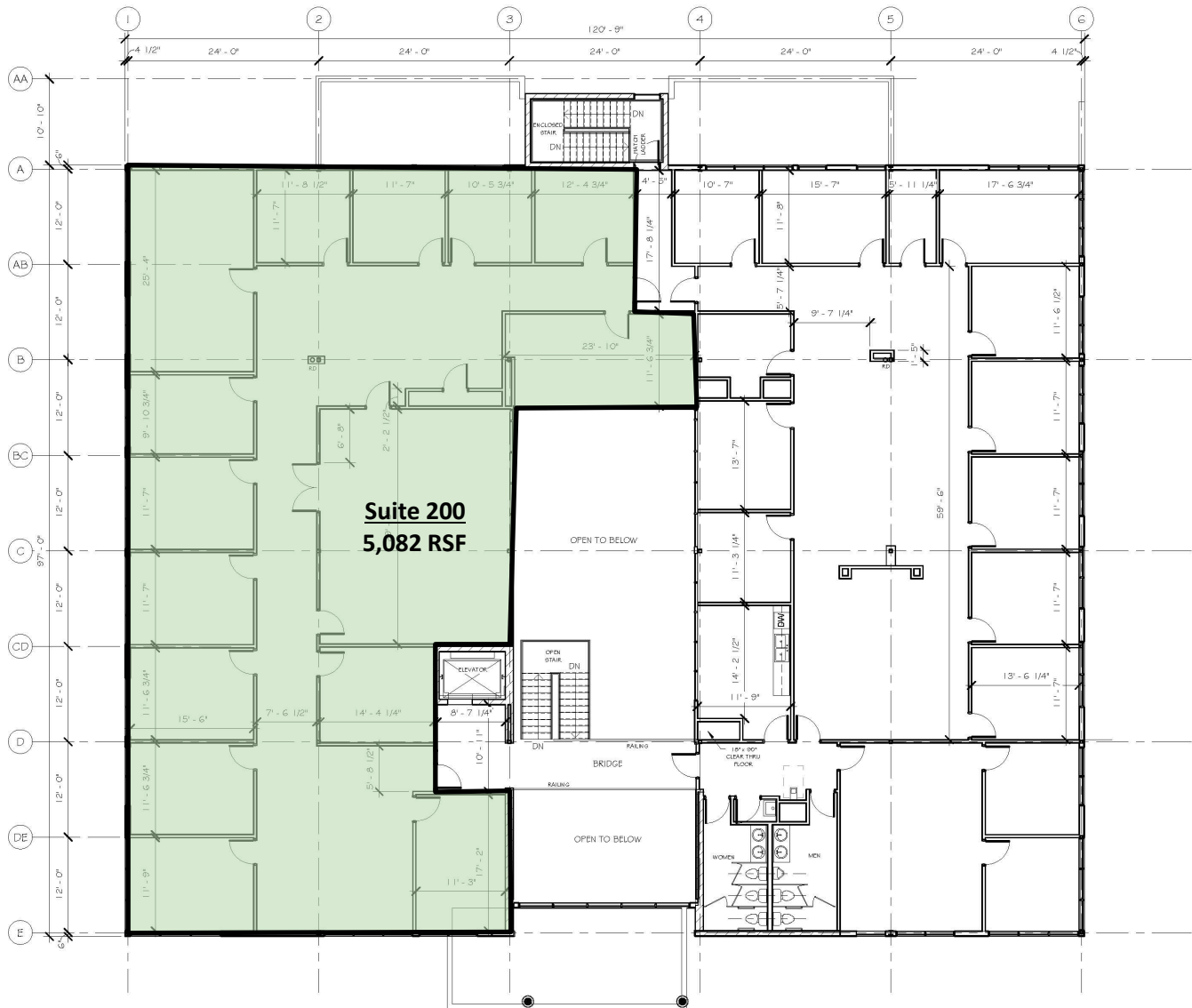
# FOR LEASE

## OLD SAUK TRAILS PARK

1001 Fourier Drive  
Madison, WI 53717



### Second Floor



**For More Information  
Please Contact:**

**Ruedebusch Commercial Investments**  
4605 Dovetail Drive  
Madison, WI 53704  
[www.ruedebusch.com/brokerage](http://www.ruedebusch.com/brokerage)

**Thomas G. Phillips, CCIM, SIOR**  
Office: 608.243.9070  
Mobile: 608.770.4950  
E-mail: [tomp@ruedebusch.com](mailto:tomp@ruedebusch.com)

The information provided herein has been obtained from sources deemed reliable and is believed to be accurate. However, no guarantee, warranty or representation is made as to the accuracy thereof. The information provided herein is subject to correction or change without notice.



## DISCLOSURE TO NON-RESIDENTIAL CUSTOMERS

1 Prior to negotiating on your behalf the brokerage firm, or an agent associated with the firm, must provide you the  
2 following disclosure statement:

3 **DISCLOSURE TO CUSTOMERS** You are a customer of the brokerage firm (hereinafter Firm). The Firm is either an agent  
4 of another party in the transaction or a subagent of another firm that is the agent of another party in the transaction. A  
5 broker or a salesperson acting on behalf of the Firm may provide brokerage services to you. Whenever the Firm is  
6 providing brokerage services to you, the Firm and its brokers and salespersons (hereinafter Agents) owe you, the  
7 customer, the following duties:

8 (a) The duty to provide brokerage services to you fairly and honestly.

9 (b) The duty to exercise reasonable skill and care in providing brokerage services to you.

10 (c) The duty to provide you with accurate information about market conditions within a reasonable time if you request  
11 it, unless disclosure of the information is prohibited by law.

12 (d) The duty to disclose to you in writing certain Material Adverse Facts about a property, unless disclosure of the  
13 information is prohibited by law (see lines 42-51).

14 (e) The duty to protect your confidentiality. Unless the law requires it, the Firm and its Agents will not disclose your  
15 confidential information or the confidential information of other parties (see lines 23-41).

16 (f) The duty to safeguard trust funds and other property held by the Firm or its Agents.

17 (g) The duty, when negotiating, to present contract proposals in an objective and unbiased manner and disclose the  
18 advantages and disadvantages of the proposals.

19 Please review this information carefully. An Agent of the Firm can answer your questions about brokerage services,  
20 but if you need legal advice, tax advice, or a professional home inspection, contact an attorney, tax advisor, or home  
21 inspector. This disclosure is required by section 452.135 of the Wisconsin statutes and is for information only. It is a  
22 plain-language summary of the duties owed to a customer under section 452.133(1) of the Wisconsin statutes.

23 **CONFIDENTIALITY NOTICE TO CUSTOMERS** The Firm and its Agents will keep confidential any information given to the  
24 Firm or its Agents in confidence, or any information obtained by the Firm and its Agents that a reasonable person  
25 would want to be kept confidential, unless the information must be disclosed by law or you authorize the Firm to  
26 disclose particular information. The Firm and its Agents shall continue to keep the information confidential after the  
27 Firm is no longer providing brokerage services to you.

28 The following information is required to be disclosed by law:

29 1. Material Adverse Facts, as defined in Wis. Stat. § 452.01(5g) (see lines 42-51).

30 2. Any facts known by the Firm or its Agents that contradict any information included in a written inspection  
31 report on the property or real estate that is the subject of the transaction.

32 To ensure that the Firm and its Agents are aware of what specific information you consider confidential, you may  
33 list that information below (see lines 35-41) or provide that information to the Firm or its Agents by other means. At a  
34 later time, you may also provide the Firm or its Agents with other Information you consider to be confidential.

35 **CONFIDENTIAL INFORMATION:** \_\_\_\_\_

36 \_\_\_\_\_

37 \_\_\_\_\_

38 **NON-CONFIDENTIAL INFORMATION** (the following information may be disclosed by the Firm and its Agents): \_\_\_\_\_

39 \_\_\_\_\_

40 \_\_\_\_\_

41 \_\_\_\_\_ (Insert information you authorize to be disclosed, such as financial qualification information.)

42 **DEFINITION OF MATERIAL ADVERSE FACTS**

43 A "Material Adverse Fact" is defined in Wis. Stat. § 452.01(5g) as an Adverse Fact that a party indicates is of such  
44 significance, or that is generally recognized by a competent licensee as being of such significance to a reasonable  
45 party, that it affects or would affect the party's decision to enter into a contract or agreement concerning a transaction  
46 or affects or would affect the party's decision about the terms of such a contract or agreement.

47 An "Adverse Fact" is defined in Wis. Stat. § 452.01(1e) as a condition or occurrence that a competent licensee  
48 generally recognizes will significantly and adversely affect the value of the property, significantly reduce the structural  
49 integrity of improvements to real estate, or present a significant health risk to occupants of the property; or information  
50 that indicates that a party to a transaction is not able to or does not intend to meet his or her obligations under a  
51 contract or agreement made concerning the transaction.

52 **NOTICE ABOUT SEX OFFENDER REGISTRY** You may obtain information about the sex offender registry and persons  
53 registered with the registry by contacting the Wisconsin Department of Corrections on the Internet at  
54 <http://www.doc.wi.gov> or by telephone at 608-240-5830.

No representation is made as to the legal validity of any provision or the adequacy of any provision in any specific transaction.  
Copyright © 2016 by Wisconsin REALTORS® Association Drafted by Attorney Debra Peterson Conrad