

RETAIL for LEASE



ABSTRACT
COMMERCIAL REAL ESTATE
RETAIL for LEASE

HEATHER EWING
608.239.4781



5957 McKee Road, Fitchburg, WI

HEATHER EWING, CCIM
Founder & President

Heather@ABSTRACT-CRE.COM
ABSTRACTCommercialRealEstate.com
608.239.4781



All information contained herein has been obtained from sources deemed to be reliable. ABSTRACT Commercial Real Estate LLC and its affiliates make no guarantees or warranties, whether express or implied, regarding the accuracy of said information.



PROPERTY HIGHLIGHTS

Available:

1634 SF at grade +
751 SF Mezzanine = 2385 SF

Rate - \$22/SF

NNN - \$7.65/SF approx.

TI - Negotiable

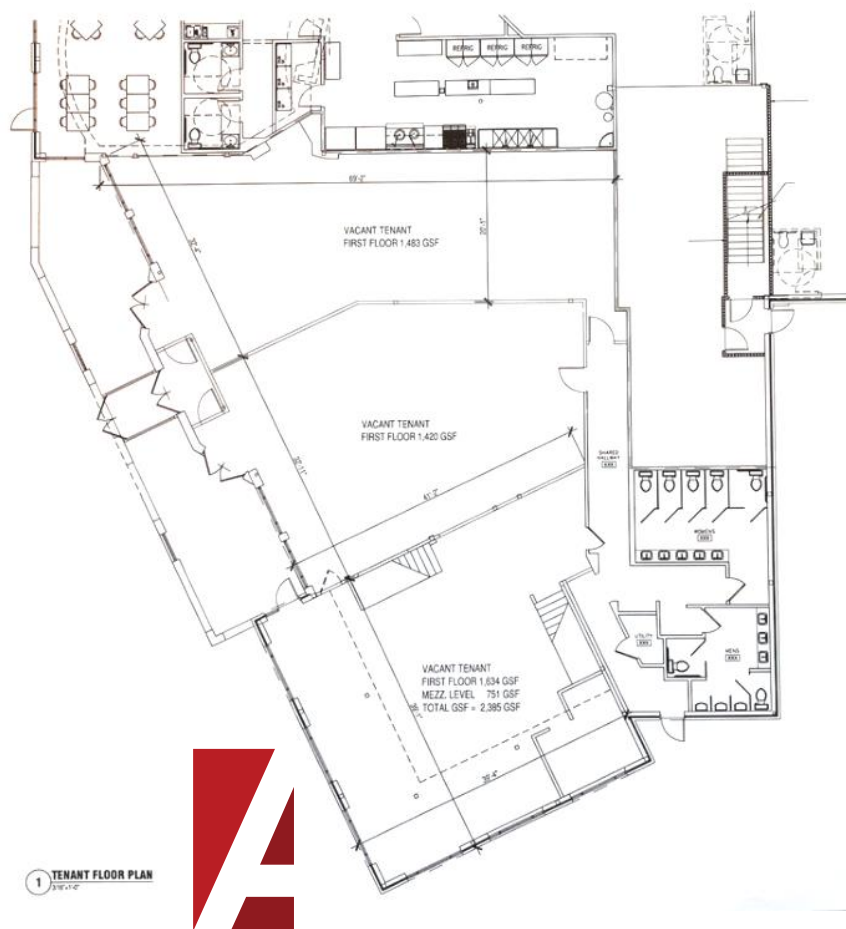
Term - 5-10 years

Parking - 9:1000

Vehicles per Day (VPD) ~ 36,700

- Located in the Heart of Fitchburg
- Strong Co-Tenancy including Dan Fox's Heritage Catering, Haveli Indian Restaurant, Blush Nail Boutique, Subway, Barriques Coffee Roasters and more
- Near Hy-Vee, Target, and the new proposed Meijer
- Easy access to Verona, US-12/18 and Downtown Madison via Seminole Hwy
- Various Signage opportunities

FLOOR PLAN



ABSTRACT
COMMERCIAL REAL ESTATE

Member of
International Council
of Shopping Centers

Heather@ABSTRACT-CRE.com | 608.239.4781 | ABSTRACTCommercialRealEstate.com

All information contained herein has been obtained from sources deemed to be reliable. ABSTRACT Commercial Real Estate LLC and its affiliates make no guarantees or warranties, whether express or implied, regarding the accuracy of said information.

SITE PLAN



5957 McKee Rd #101B

DEMOGRAPHICS

Demographics are determined by a 10-minute drive from 5957 McKee Rd, Fitchburg, WI 53719

AVG. HOUSEHOLD INCOME

1 MILE - \$90,549

3 MILE - \$81,036

5 MILE - \$82,403

Catylist Research

CITY, STATE

Fitchburg, WI

POPULATION

69,168

AVG. HH SIZE

2.42

MEDIAN HH INCOME

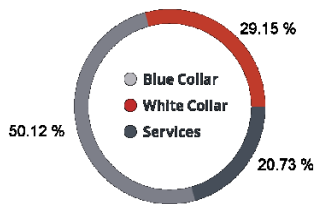
\$73,156

HOME OWNERSHIP

Renters: **11,773**

Owners: **16,347**

EMPLOYMENT



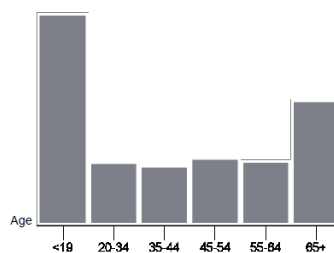
55.57% Employed / 1.46% Unemployed

EDUCATION

High School Grad: **17.30%**
 Some College: **19.63%**
 Associates: **7.71%**
 Bachelors: **48.67%**

GENDER & AGE

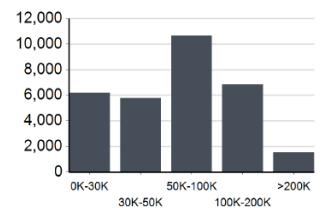
48.78% Male / 51.22% Female



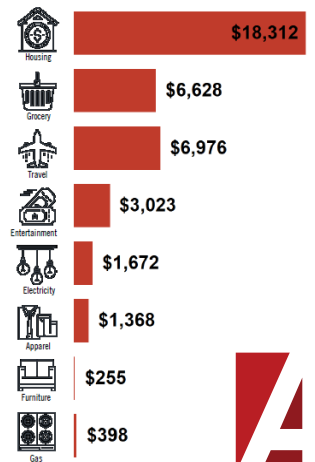
RACE & ETHNICITY

White: **56.59%**
 Asian: **3.82%**
 Native American: **0.20%**
 Pacific Islanders: **0.00%**
 African-American: **9.63%**
 Hispanic: **18.48%**
 Two or More Races: **11.27%**

INCOME BY HOUSEHOLD



HH SPENDING



This information supplied herein is from sources we deem reliable. It is provided without any representation, warranty or guarantee, expressed or implied as to its accuracy. Prospective Buyer or Tenant should conduct an independent investigation and verification of all matters deemed to be material, including, but not limited to, statements of income and expenses. Consult your attorney, accountant, or other professional advisor.

Member of International Council of Shopping Centers

ABSTRACT
COMMERCIAL REAL ESTATE

Heather@ABSTRACT-CRE.com | 608.239.4781 | ABSTRACTCommercialRealEstate.com

All information contained herein has been obtained from sources deemed to be reliable. ABSTRACT Commercial Real Estate LLC and its affiliates make no guarantees or warranties, whether express or implied, regarding the accuracy of said information.

DISCLOSURE TO NON-RESIDENTIAL CUSTOMERS

1 Prior to negotiating on your behalf the brokerage firm, or an agent associated with the firm, must provide you the
2 following disclosure statement:

3 **DISCLOSURE TO CUSTOMERS** You are a customer of the brokerage firm (hereinafter Firm). The Firm is either an agent
4 of another party in the transaction or a subagent of another firm that is the agent of another party in the transaction. A
5 broker or a salesperson acting on behalf of the Firm may provide brokerage services to you. Whenever the Firm is
6 providing brokerage services to you, the Firm and its brokers and salespersons (hereinafter Agents) owe you, the
7 customer, the following duties:

- 8 (a) The duty to provide brokerage services to you fairly and honestly.
- 9 (b) The duty to exercise reasonable skill and care in providing brokerage services to you.
- 10 (c) The duty to provide you with accurate information about market conditions within a reasonable time if you request
11 it, unless disclosure of the information is prohibited by law.
- 12 (d) The duty to disclose to you in writing certain Material Adverse Facts about a property, unless disclosure of the
13 information is prohibited by law (see lines 42-51).
- 14 (e) The duty to protect your confidentiality. Unless the law requires it, the Firm and its Agents will not disclose your
15 confidential information or the confidential information of other parties (see lines 23-41).
- 16 (f) The duty to safeguard trust funds and other property held by the Firm or its Agents.
- 17 (g) The duty, when negotiating, to present contract proposals in an objective and unbiased manner and disclose the
18 advantages and disadvantages of the proposals.

19 Please review this information carefully. An Agent of the Firm can answer your questions about brokerage services,
20 but if you need legal advice, tax advice, or a professional home inspection, contact an attorney, tax advisor, or home
21 inspector. This disclosure is required by section 452.135 of the Wisconsin statutes and is for information only. It is a
22 plain-language summary of the duties owed to a customer under section 452.133(1) of the Wisconsin statutes.

23 **CONFIDENTIALITY NOTICE TO CUSTOMERS** The Firm and its Agents will keep confidential any information given to the
24 Firm or its Agents in confidence, or any information obtained by the Firm and its Agents that a reasonable person
25 would want to be kept confidential, unless the information must be disclosed by law or you authorize the Firm to
26 disclose particular information. The Firm and its Agents shall continue to keep the information confidential after the
27 Firm is no longer providing brokerage services to you.

28 The following information is required to be disclosed by law:

- 29 1. Material Adverse Facts, as defined in Wis. Stat. § 452.01(5g) (see lines 42-51).
- 30 2. Any facts known by the Firm or its Agents that contradict any information included in a written inspection
31 report on the property or real estate that is the subject of the transaction.

32 To ensure that the Firm and its Agents are aware of what specific information you consider confidential, you may
33 list that information below (see lines 35-41) or provide that information to the Firm or its Agents by other means. At a
34 later time, you may also provide the Firm or its Agents with other Information you consider to be confidential.

35 **CONFIDENTIAL INFORMATION:** _____
36 _____
37 _____

38 **NON-CONFIDENTIAL INFORMATION** (the following information may be disclosed by the Firm and its Agents): _____
39 _____
40 _____

41 _____ (Insert information you authorize to be disclosed, such as financial qualification information.)

42 **DEFINITION OF MATERIAL ADVERSE FACTS**

43 A "Material Adverse Fact" is defined in Wis. Stat. § 452.01(5g) as an Adverse Fact that a party indicates is of such
44 significance, or that is generally recognized by a competent licensee as being of such significance to a reasonable
45 party, that it affects or would affect the party's decision to enter into a contract or agreement concerning a transaction
46 or affects or would affect the party's decision about the terms of such a contract or agreement.

47 An "Adverse Fact" is defined in Wis. Stat. § 452.01(1e) as a condition or occurrence that a competent licensee
48 generally recognizes will significantly and adversely affect the value of the property, significantly reduce the structural
49 integrity of improvements to real estate, or present a significant health risk to occupants of the property; or information
50 that indicates that a party to a transaction is not able to or does not intend to meet his or her obligations under a
51 contract or agreement made concerning the transaction.

52 **NOTICE ABOUT SEX OFFENDER REGISTRY** You may obtain information about the sex offender registry and persons
53 registered with the registry by contacting the Wisconsin Department of Corrections on the Internet at
54 <http://www.doc.wi.gov> or by telephone at 608-240-5830.

No representation is made as to the legal validity of any provision or the adequacy of any provision in any specific transaction.
Copyright © 2016 by Wisconsin REALTORS® Association Drafted by Attorney Debra Peterson Conrad

Abstract Commercial Real Estate LLC, 132 E. Wilson Street Madison, WI 53703
Heather Ewing

Produced with zipForm® by zipLogix 18070 Fifteen Mile Road, Fraser, Michigan 48026 www.zipLogix.com

Phone: 6082394781

Fax:

Untitled



ABSTRACT
COMMERCIAL REAL ESTATE



Heather@ABSTRACT-CRE.com | 608.239.4781 | ABSTRACTCommercialRealEstate.com

All information contained herein has been obtained from sources deemed to be reliable. ABSTRACT Commercial Real Estate LLC and its affiliates make no guarantees or warranties, whether express or implied, regarding the accuracy of said information.