

Park West II

440 Science Drive
Madison, WI 53711



Available for Lease

Office Space



t: 608-294-9400

leasing@compassproperties.com

www.compassproperties.com

Property Summary

Park West II at 440 Science Dr. is conveniently located near the corner of Mineral Point and Whitney Way in the very successful University Research Park. The impressive four-story, 52,706 square foot building features some of Madison’s most innovative and flourishing businesses. The lobby and common areas have been recently renovated and the building is consistently undergoing improvements to further improve service, performance, and energy efficiency.

The building is an excellent home for your company and employees — located in a park-like setting on 6 acres, Park West II features ample free parking and excellent views of the park. With several restaurant, fitness, and shopping destinations nearby, this easily accessible location is just 15 minutes from downtown Madison, Middleton, Verona, and Fitchburg.

Building Description: 52,706 square foot, four-story professional building. Part of the UW Research Park campus which is comprised of over 37 buildings with almost 2 million square feet of space and over 3,500 employees.

Space Availability:	Suite 102	1,407 RSF	Suite 200	3,095 RSF
	Suite 201	1,669 RSF	Suite 203	4,249 RSF
	Suite 303	1,361 RSF		

Lease Rate: \$14.50 NNN (est. NNN: \$8.75/RSF including Janitorial)

Occupancy: Avail. Now (Suite 200, 201) 90 Day Notice (Suite 102, 303)

Improvements: Negotiable

Parking: Four parking stalls per 1,000 SF leased

Amenities:

- Professional lobby design, common conference/training center with Wi-Fi
- Easy access to UW, shopping, restaurants and the 12/18 Beltline Hwy
- Document storage rooms onsite
- Podcast studio
- Secure building with after-hours card access
- Ample on-site parking at no additional charge
- Handsfree restroom features
- Professionally managed by Compass Properties

Property Photographs



Conference/Training Room



Building Lobby

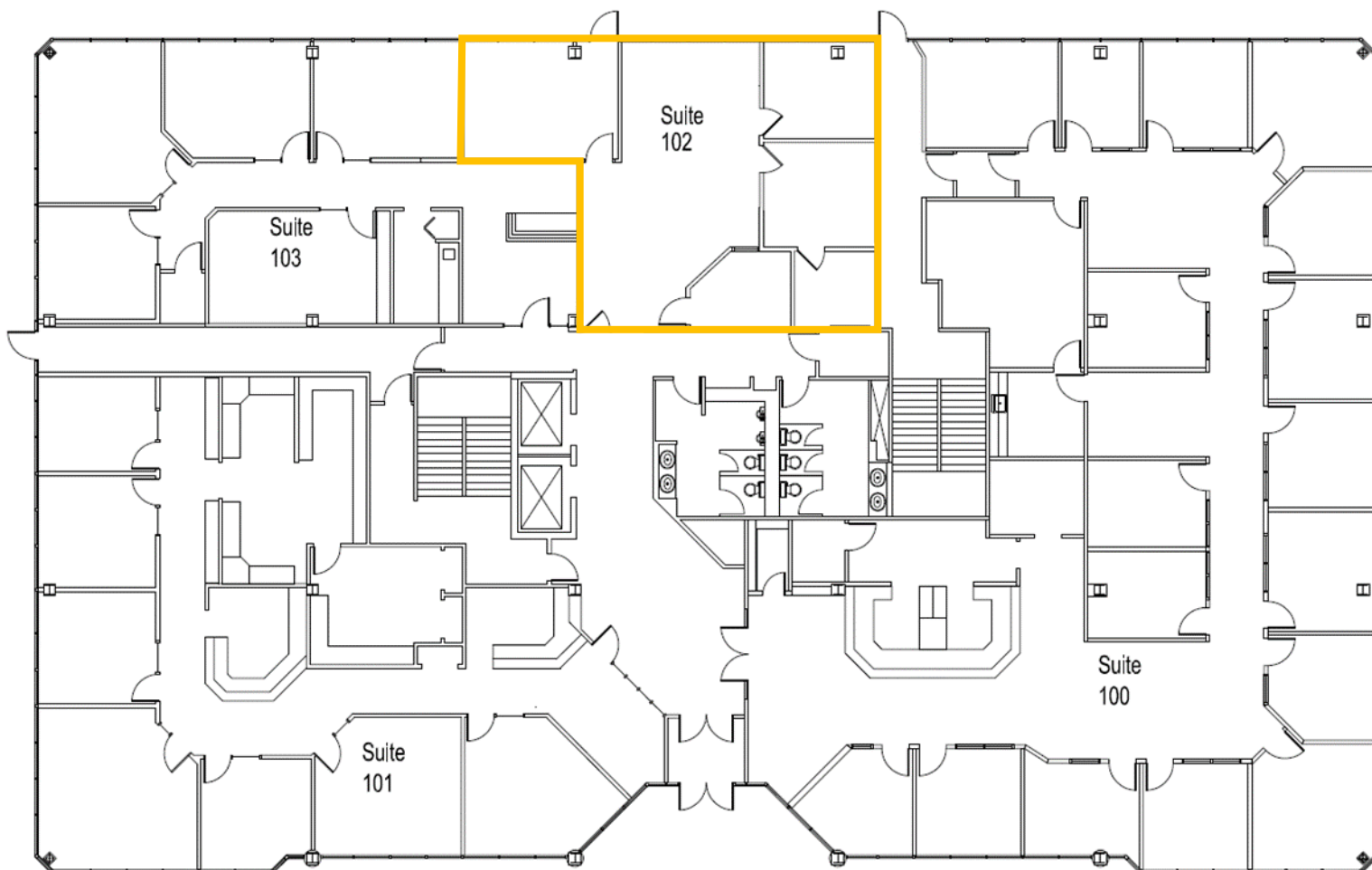


Typical Corner Office View



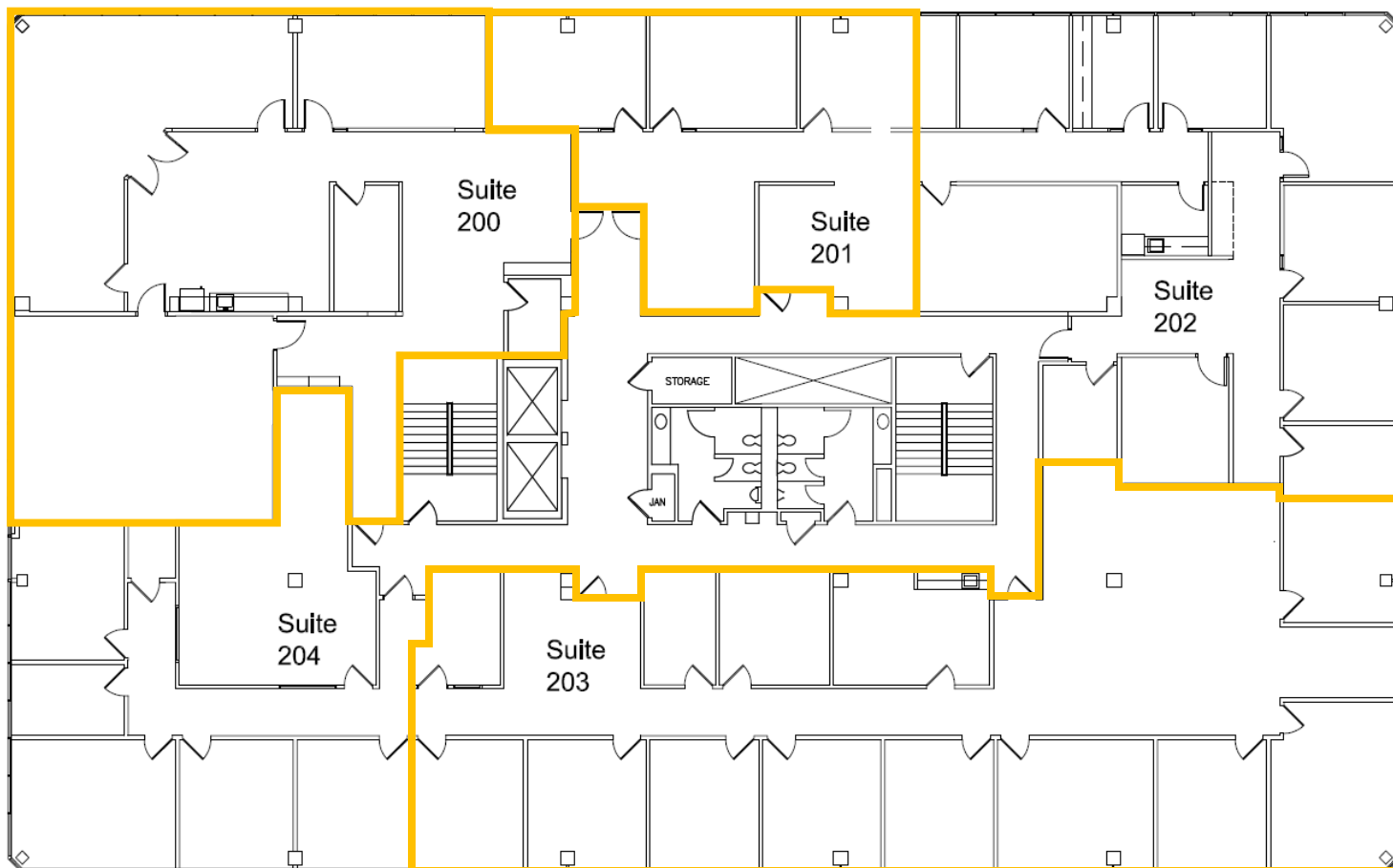
Typical Office Finish

First Floor



Suite 102 1,407 RSF

Second Floor

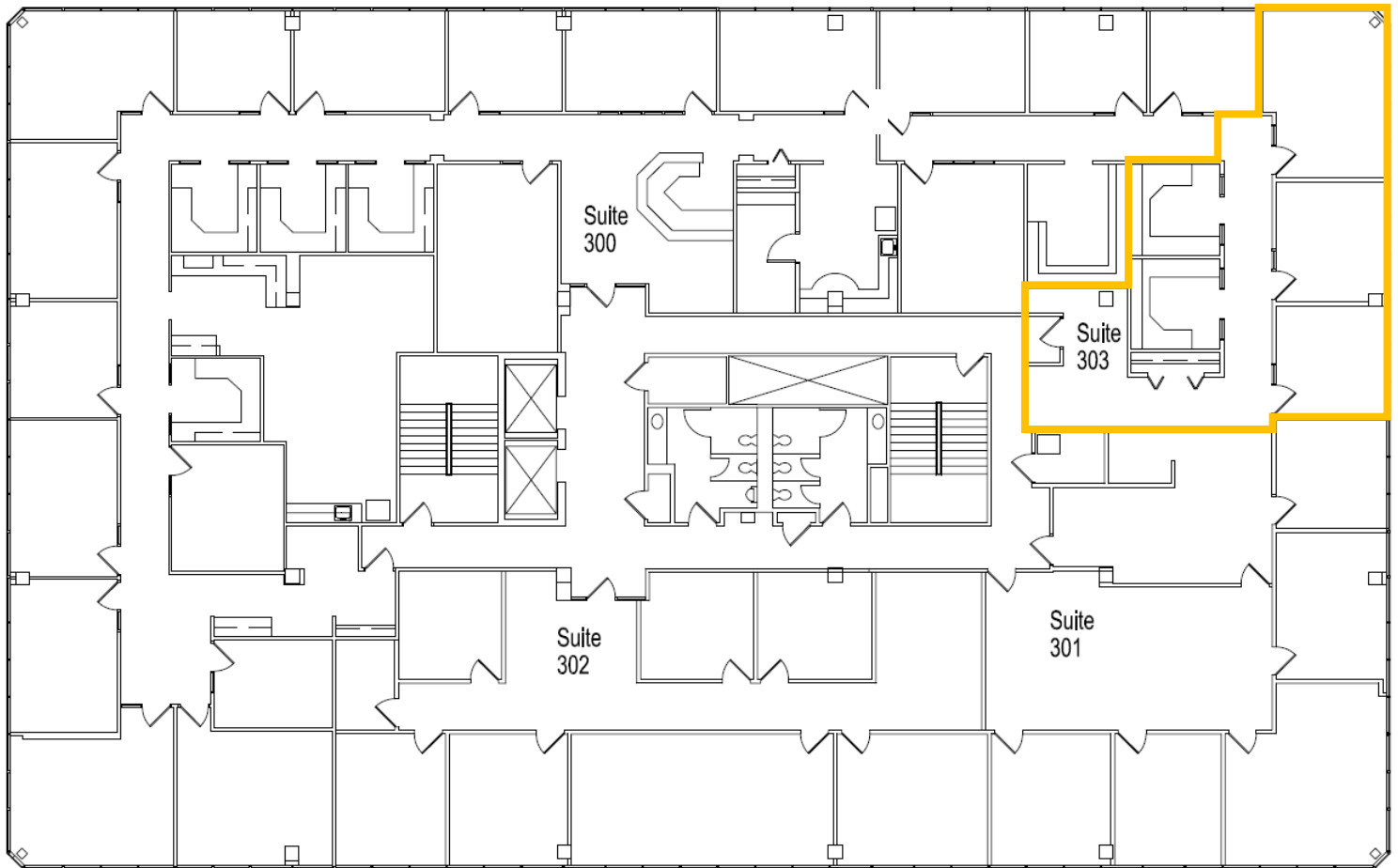


Suite 200 3,095 RSF

Suite 201 1,669 RSF

Suite 203 4,249 RSF

Third Floor



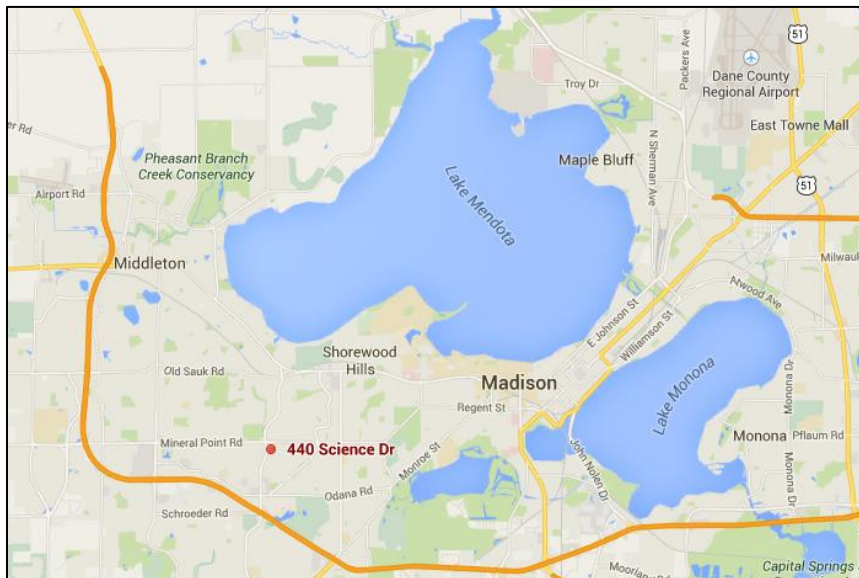
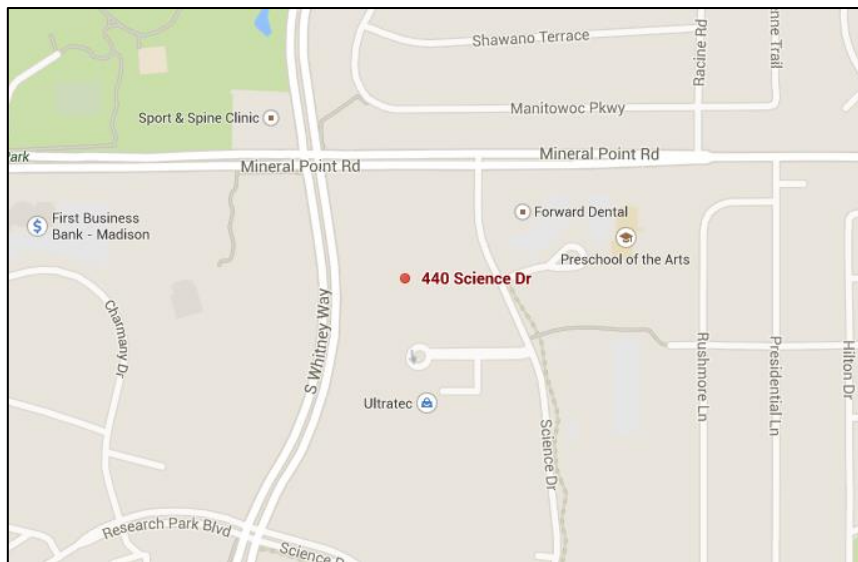
Suite 303 1,361 RSF

Location

Established in 1984, University Research Park, a University of Wisconsin-Madison affiliate, is an internationally recognized research and technology park that supports early-stage and growth-oriented businesses in a range of sectors including engineering, computational and life sciences.

Park West II is less than 2 miles from West Towne Mall and just a 30-minute drive (10.1 miles) from Dane County Regional Airport. Also, less than 1 mile to the south is a mix of shops and restaurants including Walgreens, Hy-Vee, Vintage Brewing Co., and an Applebee's.

Bus service (routes 06 and 11) is available on Science Drive near the entrance of the property.



Subject Property and Building

