

FOR SALE

# FLEX/INDUSTRIAL FOR SALE

2920 PERRY STREET | MADISON, WI 53713

**CBRE**

[WWW.CBRE.US/MADISON](http://WWW.CBRE.US/MADISON)

## PROPERTY OVERVIEW

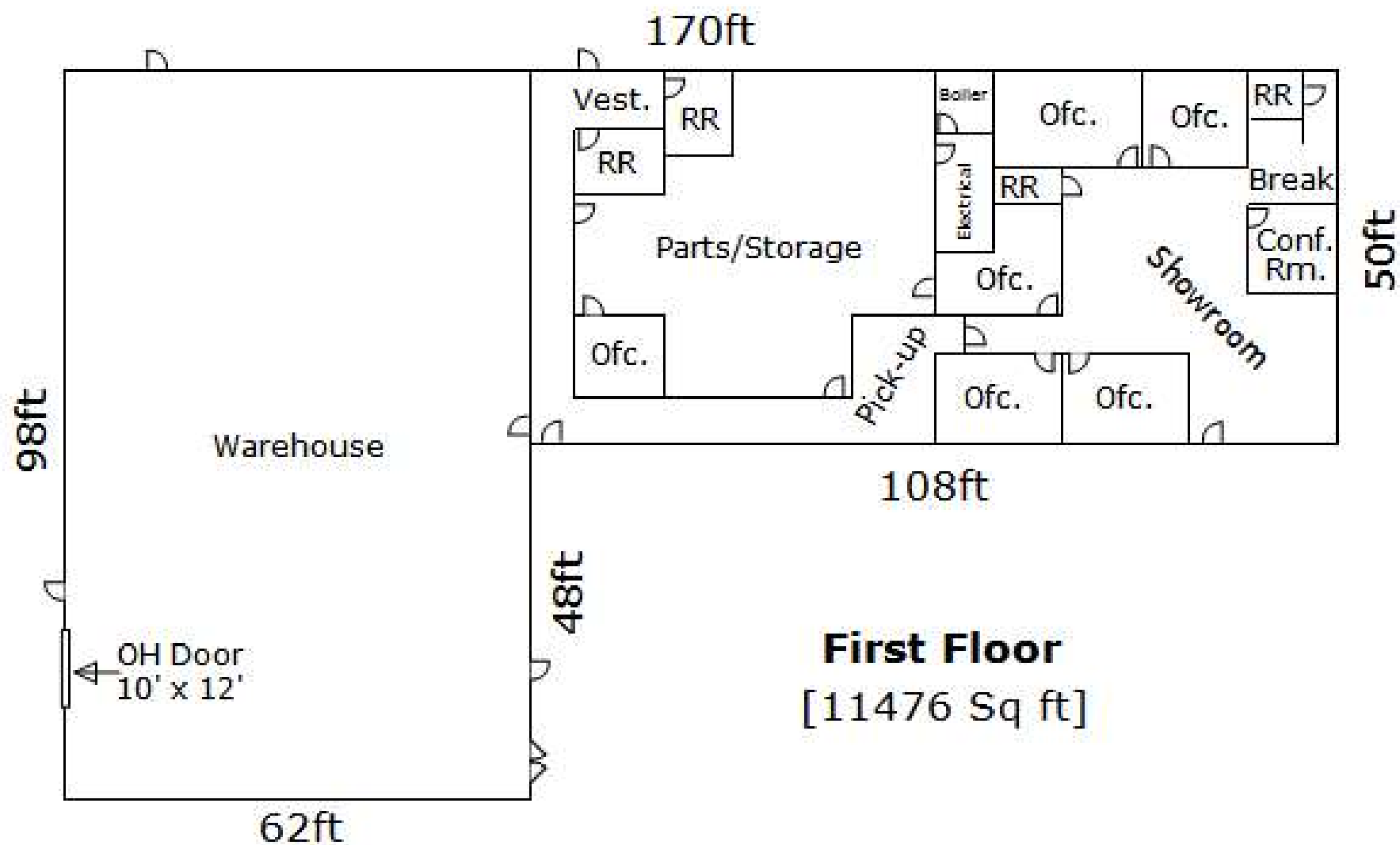
### SMALL FLEX/WAREHOUSE BUILDING

2920 Perry Street is an 11,476 SF warehouse/office/showroom building located off of Fish Hatchery Road, near the Beltline Highway. It is approximately 50% finished space and 50% warehouse. Pre-engineered steel building with rubber membrane roof. One drive-in door, and one double-door for deliveries. Finished space renovated around 2010. Great for a service company, supplier, contractor, etc. \* Property to be sold with the adjacent 3002 Perry Street building, with cross easement for parking for the office building.

### BUILDING DETAILS

- Price: \$800,000
- Building SF: 11,476
- Parcel Size: 46,600 SF
- Year Built: 1971, Expanded 1983, Renovated 2010
- Current Use: Office/Showroom/Warehouse
- Number of Floors: 1
- Ceiling Height: Approximately 12-16'
- Zoning: IG - Industrial Limited
- Outside Parking: Yes
- Municipal Sewer/Water: Yes
- Drive Doors: One (1) drive-in door
- Power: 800 Amp, 3-Phase
- HVAC: Office heated and cooled, warehouse heated

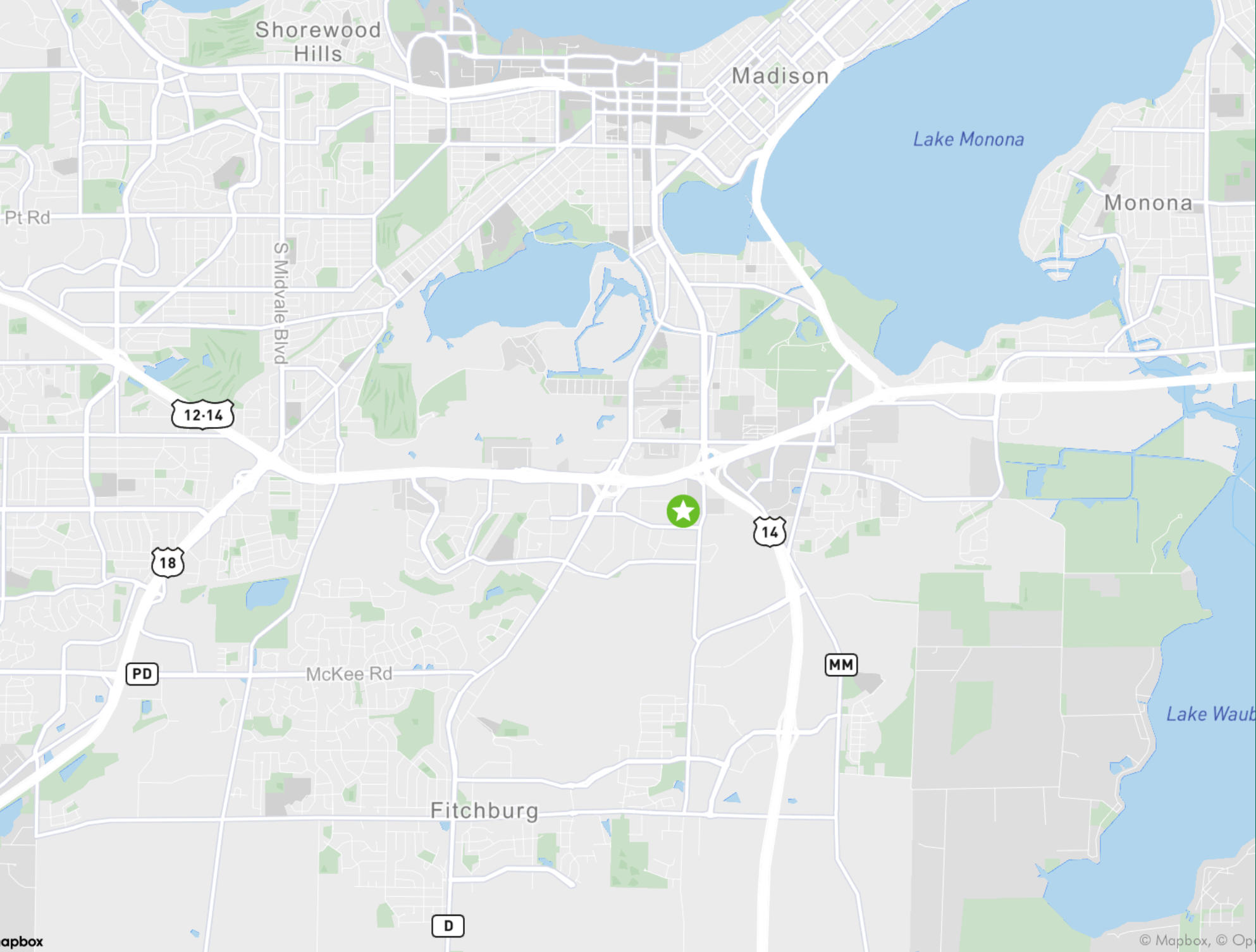




**First Floor**  
[11476 Sq ft]







apbox

© Mapbox, © Op

## LOCATION MAP

2920 PERRY STREET | FOR SALE



# FLEX/INDUSTRIAL FOR SALE

2920 PERRY STREET | MADISON, WI 53713

**CHASE BRIEMAN, CCIM**

Senior Vice President  
+1 608 441 7571  
[chase.brieman@cbre.com](mailto:chase.brieman@cbre.com)

**GRETCHEN RICHARDS, CCIM**

Vice President  
+1 608 441 7575  
[gretchen.richards@cbre.com](mailto:gretchen.richards@cbre.com)

**CBRE**

© 2021 CBRE, Inc. All rights reserved. This information has been obtained from sources believed reliable, but has not been verified for accuracy or completeness. You should conduct a careful, independent investigation of the property and verify all information. Any reliance on this information is solely at your own risk. CBRE and the CBRE logo are service marks of CBRE, Inc. All other marks displayed on this document are the property of their respective owners. Photos herein are the property of their respective owners. Use of these images without the express written consent of the owner is prohibited.