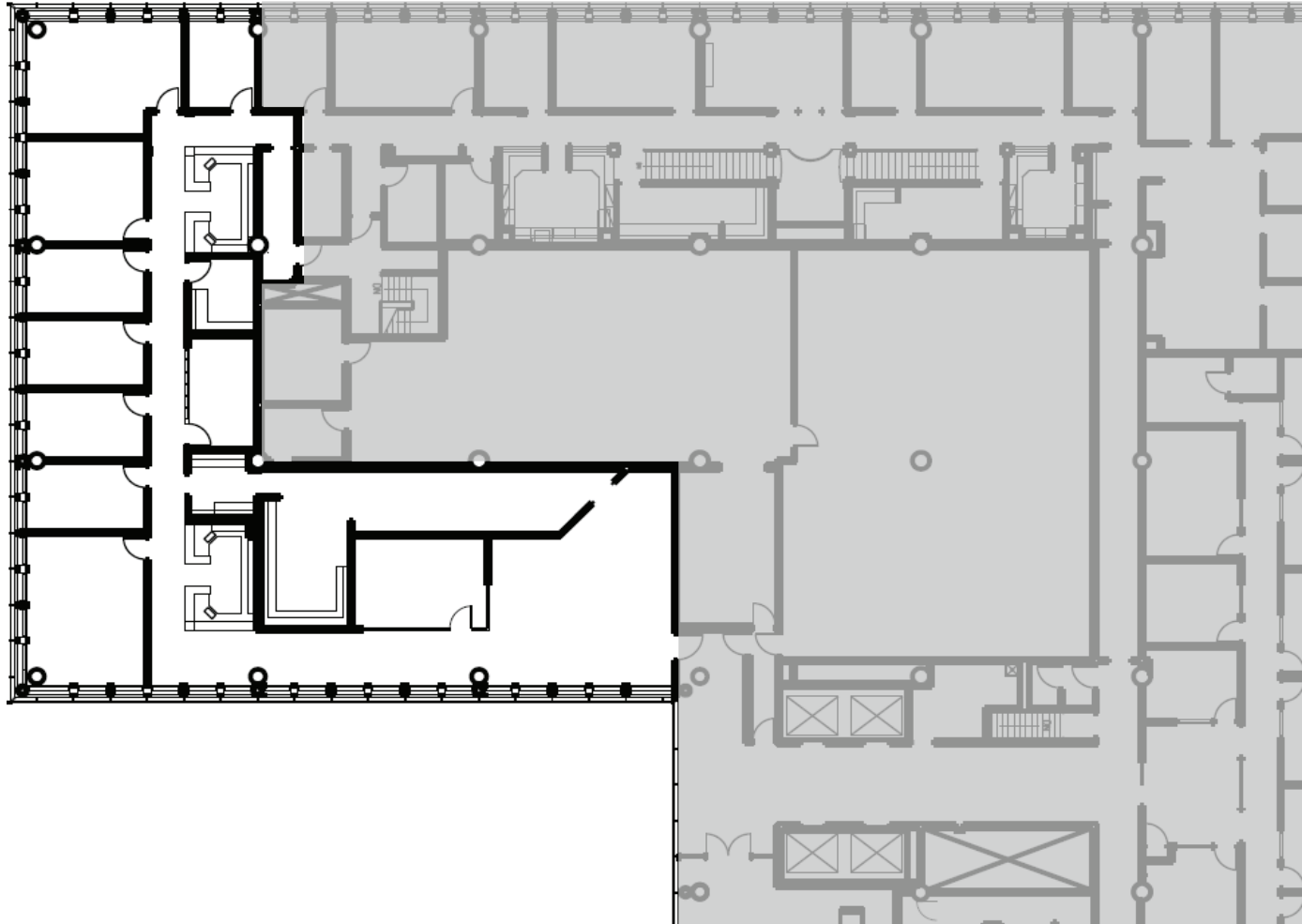


US BANK PLAZA

Suite 950 • 6,097 RSF • Available Now



SUITE FEATURES

- Floor-to-ceiling windows with direct views of the Wisconsin State Capitol building
- Eight exterior offices, including two corner offices / conference rooms
- Reception and seating area
- Interior workstations
- Fully Gross - electricity included



Urban Land Interests

10 East Doty Street, Suite 300

Madison, WI 53703

608.251.0706

www.uli.com