

TDI ASSOCIATES, INC.  
ARCHITECTS, ENGINEERS, PLANNERS

N8 W22350 JOHNSON DRIVE, SUITE B4  
WAUKESHA, WISCONSIN 53186  
PHONE 262-437-0400 FAX 262-437-0401

HALVERSON FLOORING WAREHOUSE  
& TENANT

Capital Circle Drive  
Janesville, Wisconsin

TDI ASSOCIATES, INC.  
All Rights Reserved

OWNERSHIP OF DOCUMENTS

This document, and the ideas and design incorporated herein, as an instrument of professional service, is the sole property of TDI Associates, Inc., and is not to be used in whole or in part for any other project or purpose without the expressed written authorization of TDI Associates, Inc.

Sheet Title  
Exterior Elevations

Issued For: CONSTRUCTION SET Date: 02.21.08

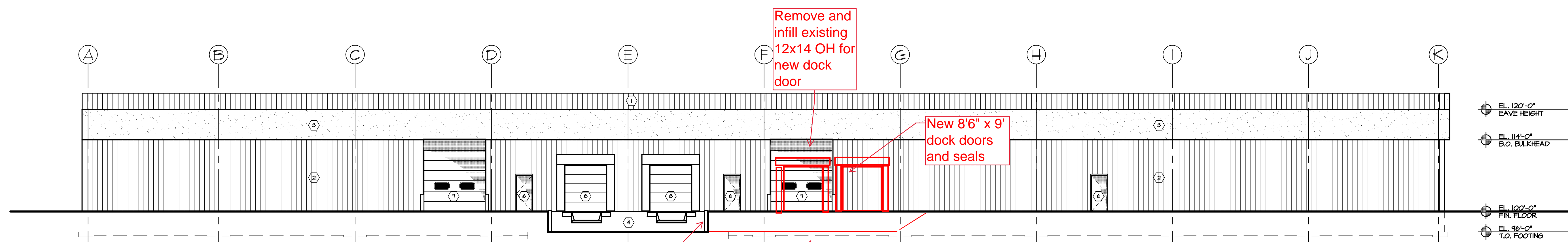
Date: 02.21.08

Job NO.: 08-104

Drawn By: daj

Sheet No.

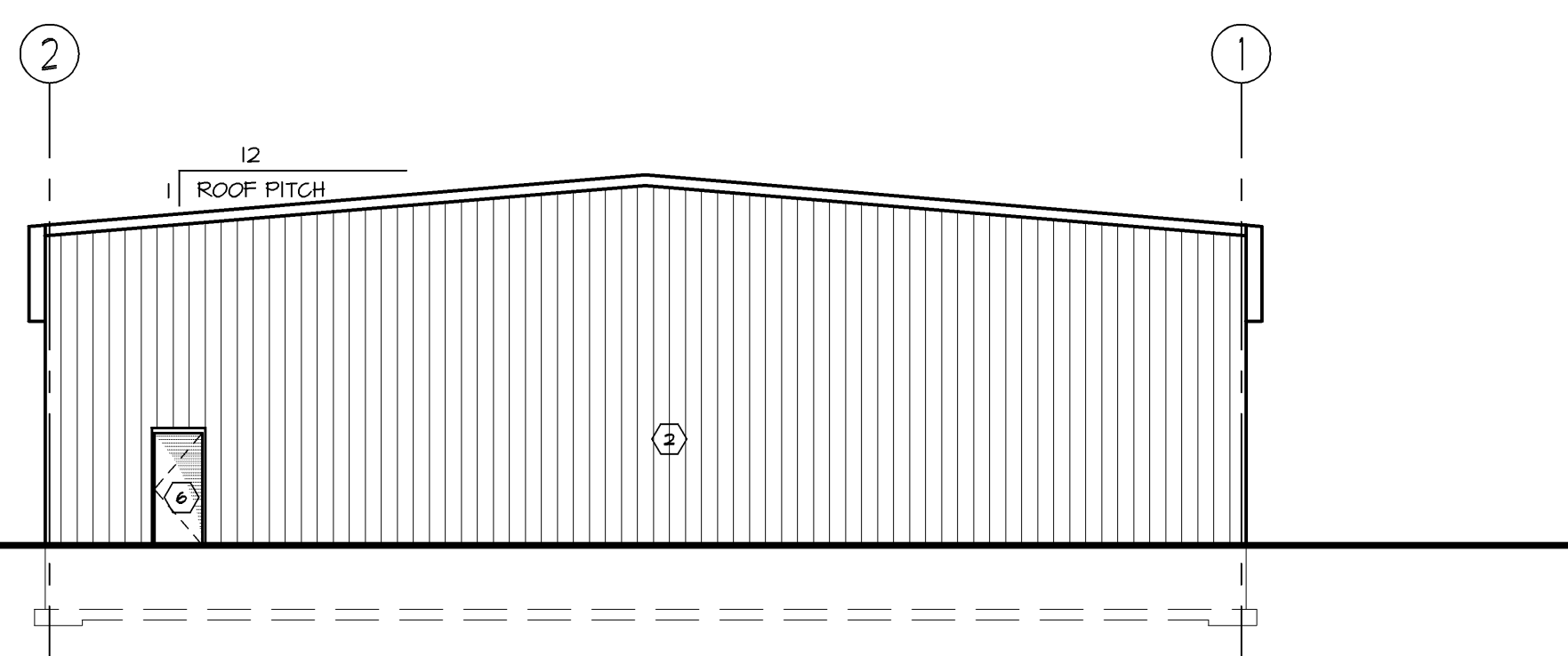
A2.1



**SOUTH ELEVATION**  
SCALE 3/32" = 1'-0"

South Elev.			
Metal Panel:	3,081 sf	=	51.6%
Door:	73 sf	=	1.4%
Ovhd:	336 sf	=	6%
Docks:	248 sf	=	5%
EIFS:	1,608 sf	=	30%
Total sf:	5,346 sf	=	100%

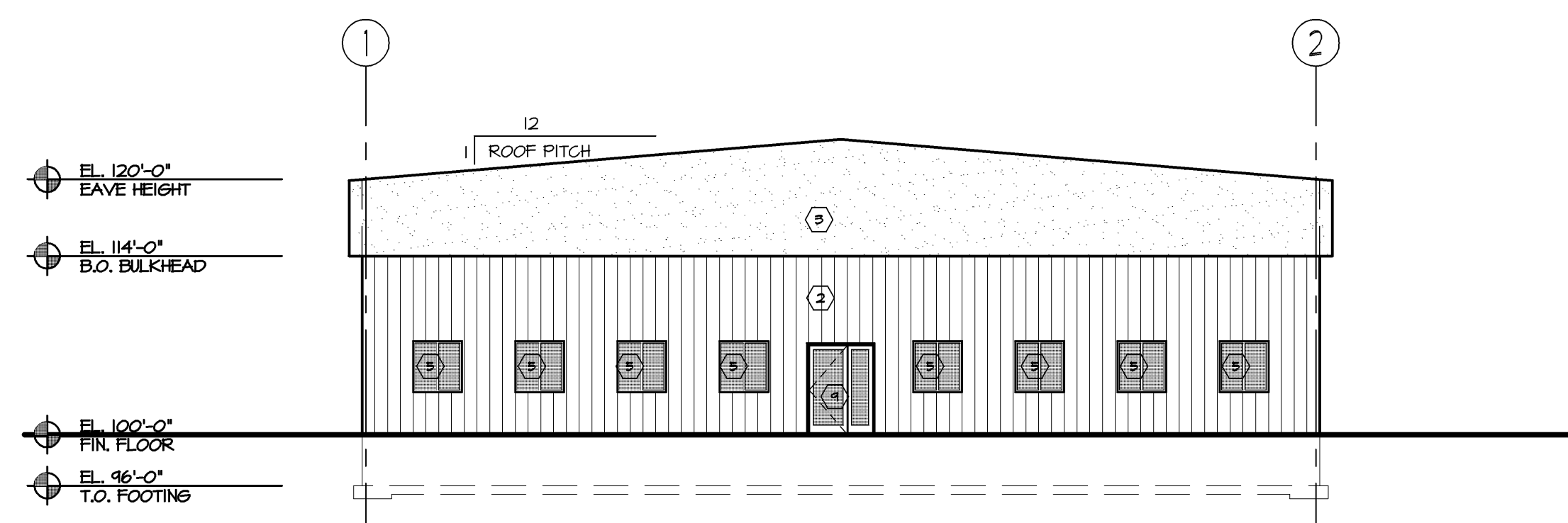
Remove and infill existing 12x14 OH for new dock door  
New 8'6" x 9' dock doors and seals  
Existing dock wall to remain  
Insulate existing footing prior to pouring dock apron  
New dock apron 35' wide



**WEST ELEVATION**  
SCALE 3/32" = 1'-0"

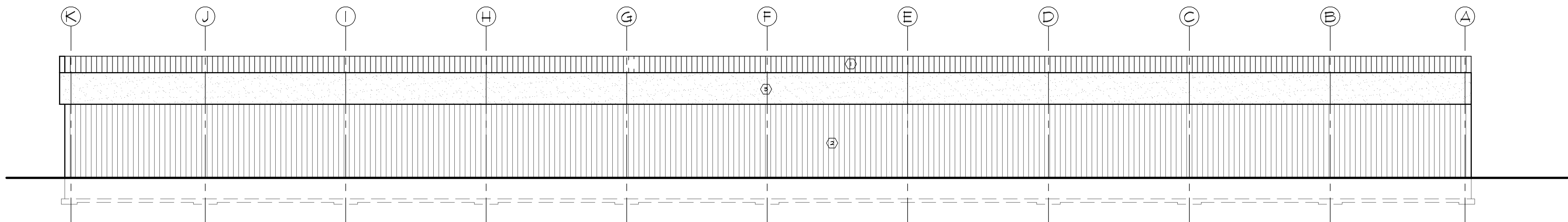
West Elev.			
Metal Panel:	1,543 sf	=	91.8%
Door:	24 sf	=	1.5%
EIFS:	12 sf	=	0.7%
Total sf:	1,624 sf	=	100%

TAG	DESCRIPTION
①	26 ga. SCREW DOWN METAL ROOF
②	INSULATED METAL WALL PANEL
③	8' OUTSET IPS EIFS FINISH PANEL
④	CONC. FOUNDATION
⑤	INSULATED ALUMINUM WINDOW w/ CLEAR GLAZING
⑥	INSULATED ENTRY DOOR
⑦	INSULATED OVERHEAD DOOR
⑧	INSULATED DOCK OVERHEAD DOOR
⑨	ALUMINUM STOREFRONT DOOR



**EAST ELEVATION**  
SCALE 3/32" = 1'-0"

West Elev.			
Metal Panel:	724 sf	=	48%
Door:	138 sf	=	8.5%
Windows:	128 sf	=	8%
EIFS:	579 sf	=	35.5%
Total sf:	1,624 sf	=	100%



**NORTH ELEVATION**  
SCALE 3/32" = 1'-0"

North Elev.			
Metal Panel:	3,738 sf	=	70%
EIFS:	1,608 sf	=	30%
Total sf:	5,346 sf	=	100%