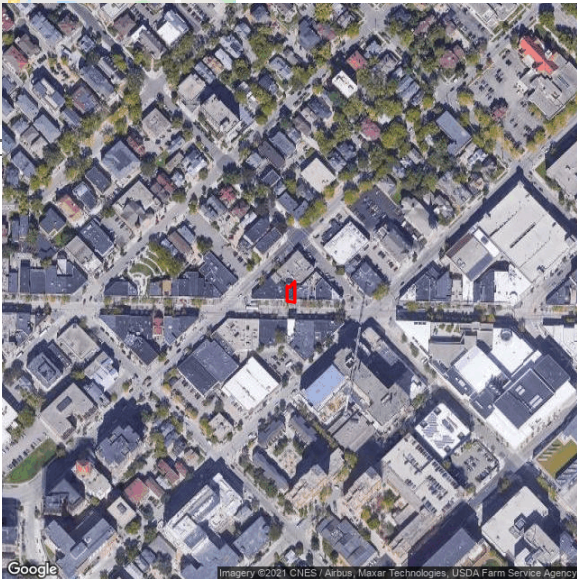


Demographic Report



326-330 State St

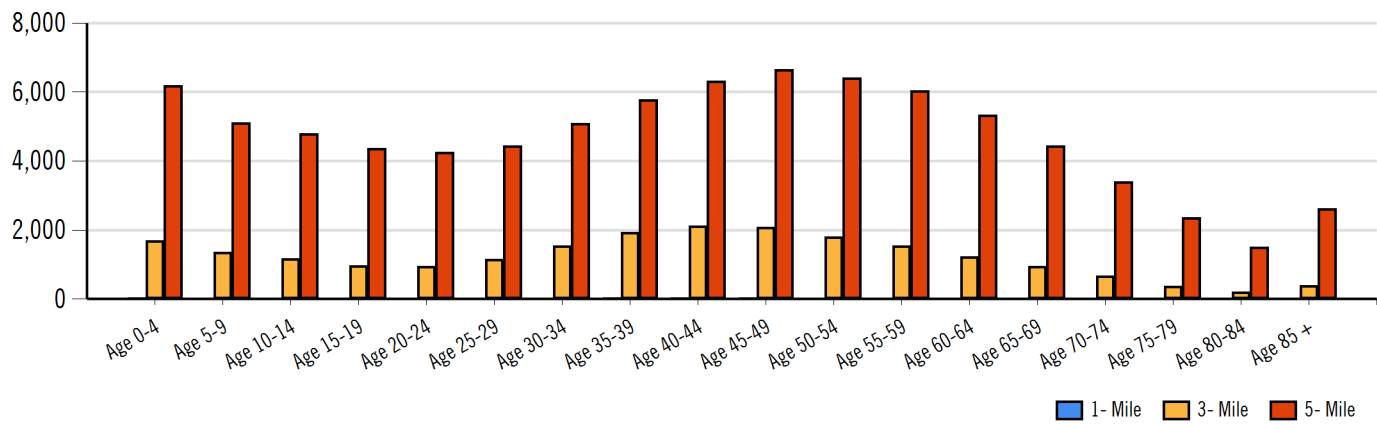


Population

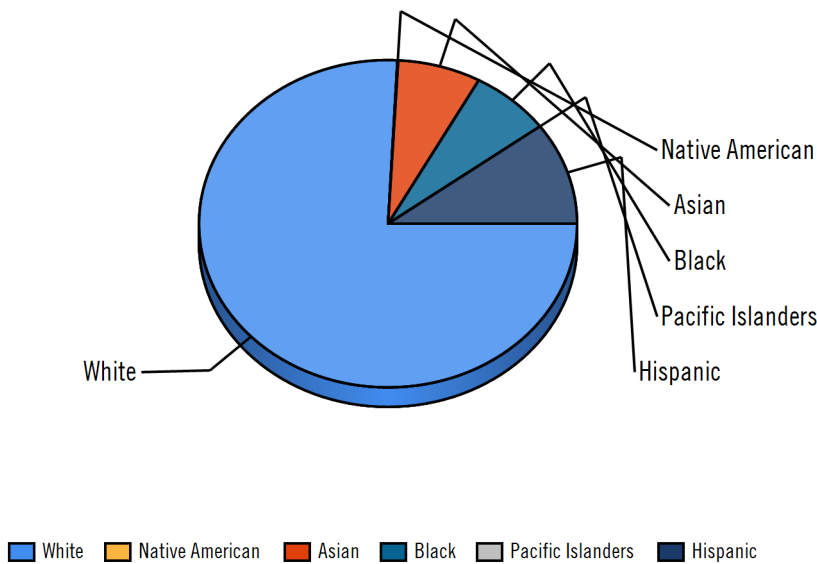
Distance	Male	Female	Total
1- Mile	237	218	455
3- Mile	11,215	11,070	22,285
5- Mile	41,478	43,733	85,210



Population by Distance and Age (2020)



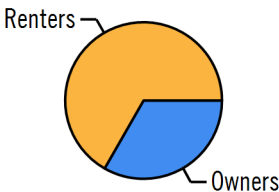
Ethnicity within 5 miles



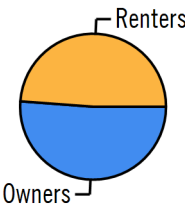
Home Ownership 1 Mile



Home Ownership 3 Mile



Home Ownership 5 Mile



Employment by Distance

Distance	Employed	Unemployed	Unemployment Rate
1-Mile	263	11	0.73 %
3-Mile	13,330	377	2.13 %
5-Mile	48,997	1,636	2.55 %



326-330 State St



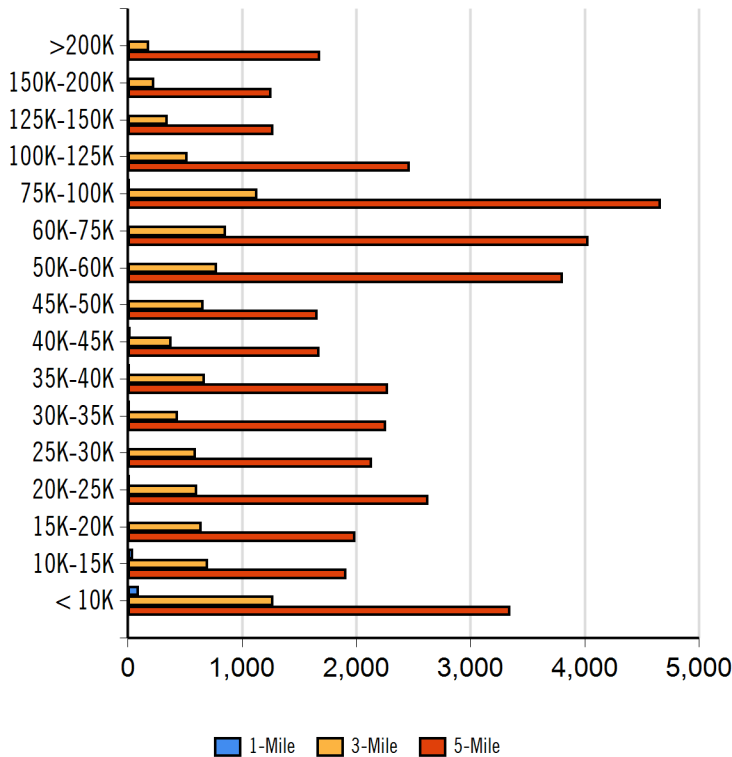
ABSTRACT Commercial Real Estate

132 E Wilson St Madison, WI 53703 | 608-239-4781

Labor & Income

	Agriculture	Mining	Construction	Manufacturing	Wholesale	Retail	Transportation	Information	Professional	Utility	Hospitality	Pub-Admin	Other
1-Mile	7	0	1	29	0	14	0	0	22	116	2	22	28
3-Mile	53	8	341	780	245	822	288	308	1,344	5,830	1,540	624	701
5-Mile	224	98	1,469	3,614	966	4,007	1,440	1,440	5,574	17,152	4,965	2,676	2,929

Household Income



Radius	Median Household Income
1-Mile	\$25,699.50
3-Mile	\$52,305.89
5-Mile	\$61,106.05

Radius	Average Household Income
1-Mile	\$37,880.50
3-Mile	\$58,094.00
5-Mile	\$70,017.04

Radius	Aggregate Household Income
1-Mile	\$5,975,841.48
3-Mile	\$527,785,881.35
5-Mile	\$2,478,940,100.88

Education

	1-Mile	3-mile	5-mile
Pop > 25	335	16,110	60,456
High School Grad	76	1,714	10,521
Some College	53	2,180	10,260
Associates	25	728	3,795
Bachelors	79	5,054	16,025
Masters	30	3,398	8,208
Prof. Degree	1	532	2,227
Doctorate	9	826	1,948

Tapestry

	1-Mile	3-mile	5-mile
Vacant Ready For Rent	1 %	24 %	43 %
Teen's	11 %	51 %	63 %
Expensive Homes	0 %	31 %	27 %
Mobile Homes	0 %	6 %	10 %
New Homes	0 %	8 %	11 %
New Households	26 %	129 %	99 %
Military Households	0 %	2 %	7 %
Households with 4+ Cars	9 %	57 %	40 %
Public Transportation Users	32 %	181 %	138 %
Young Wealthy Households	0 %	61 %	41 %

This Tapestry information compares this selected market against the average. If a tapestry is over 100% it is above average for that statistic. If a tapestry is under 100% it is below average.



Heather Ewing, CCIM
 Heather@ABSTRACT-CRE.com
 608-239-4781



Expenditures

	1-Mile	%	3-Mile	%	5-Mile	%
Total Expenditures	8,370,553		425,409,355		1,789,757,725	
Average annual household	37,529		44,394		48,257	
Food	5,182	13.81 %	5,876	13.24 %	6,290	13.03 %
Food at home	3,551		3,893		4,099	
Cereals and bakery products	496		552		583	
Cereals and cereal products	177		197		208	
Bakery products	318		354		374	
Meats poultry fish and eggs	735		786		820	
Beef	172		182		190	
Pork	128		141		146	
Poultry	141		150		155	
Fish and seafood	122		126		132	
Eggs	59		64		67	
Dairy products	355		390		414	
Fruits and vegetables	700		780		830	
Fresh fruits	100		113		122	
Processed vegetables	140		151		159	
Sugar and other sweets	131		143		150	
Fats and oils	111		123		130	
Miscellaneous foods	674		734		770	
Nonalcoholic beverages	316		337		349	
Food away from home	1,631		1,983		2,191	
Alcoholic beverages	245		310		346	
Housing	14,221	37.89 %	16,317	36.75 %	17,436	36.13 %
Shelter	8,606		9,864		10,552	
Owned dwellings	4,414		5,565		6,232	
Mortgage interest and charges	2,180		2,782		3,131	
Property taxes	1,451		1,858		2,098	
Maintenance repairs	782		923		1,002	
Rented dwellings	3,633		3,556		3,455	
Other lodging	558		742		863	
Utilities fuels	3,440		3,873		4,078	
Natural gas	312		356		380	
Electricity	1,437		1,572		1,632	
Fuel oil	120		143		158	
Telephone services	1,043		1,198		1,266	
Water and other public services	527		601		640	
Household operations	877	2.34 %	1,083	2.44 %	1,185	2.46 %
Personal services	236		311		342	
Other household expenses	641		771		843	
Housekeeping supplies	494		550		587	
Laundry and cleaning supplies	145		152		159	
Other household products	272		315		341	
Postage and stationery	77		82		86	
Household furnishings	804		946		1,032	
Household textiles	69		71		77	
Furniture	160		206		232	
Floor coverings	16		22		26	
Major appliances	101		125		135	
Small appliances	75		83		89	
Miscellaneous	381		435		469	
Apparel and services	1,140	3.04 %	1,241	2.80 %	1,296	2.69 %
Men and boys	200		229		248	
Men 16 and over	158		187		205	
Boys 2 to 15	42		42		42	
Women and girls	412		448		473	



326-330 State St



ABSTRACT Commercial Real Estate

132 E Wilson St Madison, WI 53703 | 608-239-4781

Women 16 and over	345	375	401
Girls 2 to 15	67	73	72
Children under 2	93	93	92

Expenditures (Continued)

	1-Mile	%	3-Mile	%	5-Mile	%
Total Expenditures	8,370,553		425,409,355		1,789,757,725	
Average annual household	37,529		44,394		48,257	
Transportation	5,052	13.46 %	6,044	13.61 %	6,563	13.60 %
Vehicle purchases	1,106		1,365		1,527	
Cars and trucks new	489		676		789	
Cars and trucks used	592		654		698	
Gasoline and motor oil	1,731		1,971		2,085	
Other vehicle expenses	1,876		2,288		2,476	
Vehicle finance charges	119		153		169	
Maintenance and repairs	678		800		864	
Vehicle insurance	845		1,053		1,131	
Vehicle rental leases	234		281		310	
Public transportation	339		418		474	
Health care	2,777	7.40 %	3,372	7.60 %	3,704	7.68 %
Health insurance	1,894		2,242		2,438	
Medical services	519		684		775	
Drugs	272		334		369	
Medical supplies	91		110		121	
Entertainment	2,134	5.69 %	2,590	5.83 %	2,833	5.87 %
Fees and admissions	355		470		545	
Television radios	843		961		1,012	
Pets toys	773		943		1,033	
Personal care products	482		568		620	
Reading	40		49		54	
Education	1,069		1,189		1,303	
Tobacco products	386		397		399	
Miscellaneous	575	1.53 %	709	1.60 %	786	1.63 %
Cash contributions	957		1,175		1,298	
Personal insurance	3,264		4,551		5,322	
Life and other personal insurance	114		143		162	
Pensions and Social Security	3,150		4,408		5,159	

Estimated Households					Housing Occupied By		Housing Occupancy		
Distance	Year	Projection	2018	Change	1 Person	Family	Owner	Renter	Vacant
1-Mile	2020	1,633	1,444	13.52 %	871	370	311	1,322	51
3-Mile	2020	14,133	12,174	15.24 %	5,116	5,994	4,958	9,175	408
5-Mile	2020	49,828	44,123	12.22 %	17,564	24,898	26,969	22,859	4,498
1-Mile	2023	1,676	1,444	16.69 %	895	381	300	1,376	113
3-Mile	2023	14,662	12,174	19.32 %	5,303	6,230	5,093	9,569	1,112
5-Mile	2023	51,141	44,123	15.08 %	18,026	25,532	27,613	23,528	6,577



Heather Ewing, CCIM
Heather@ABSTRACT-CRE.com
608-239-4781



This information supplied herein is from sources we deem reliable. It is provided without any representation, warranty or guarantee, expressed or implied as to its accuracy. Prospective Buyer or Tenant should conduct an independent investigation and verification of all matters deemed to be material, including, but not limited to, statements of income and expenses. Consult your attorney, accountant, or other prof. advisor.