



for lease



**Available 4th
Quarter, 2022**

**Office, Retail
Restaurant**

Located on a prime parcel in the heart of the booming Capitol East District, the newest class A tower in Madison is next door to the brand new Hotel Indigo, across the street from Breese Stevens Field and only one block from the Sylvee.

- **Great Location for Employee Quality of Life -Live, Work, play!**
- **Nearly an Acrea of Green Roof on Fourth Floor Overlooking Lake Monona - Private Green Roof on 11th Floor**
- **Suites from 6,500 - 140,000 Rentable Square Feet with 10 Foot Ceilings**

- **Rental Rates:
\$24.00 - \$28.00/RSF NNN, based location in the building**
- **Available in 2023 for Customized Tenant Improvements**
- **Improvement Allowance Available, Subject to Lease Terms**
- **Ample Structured Parking & Direct Entry into Several Spaces**

CONTACT



Matt Brink | mcbriink@360cres.com | 608.658.7431 (c)

Janine Punzel, CCIM | jkpunzel@360cres.com | 608.212.8336 (c)

701 E. Washington Avenue, Suite LL2, Madison, WI 53703 | 608.807.0660 (o)



Phase 1



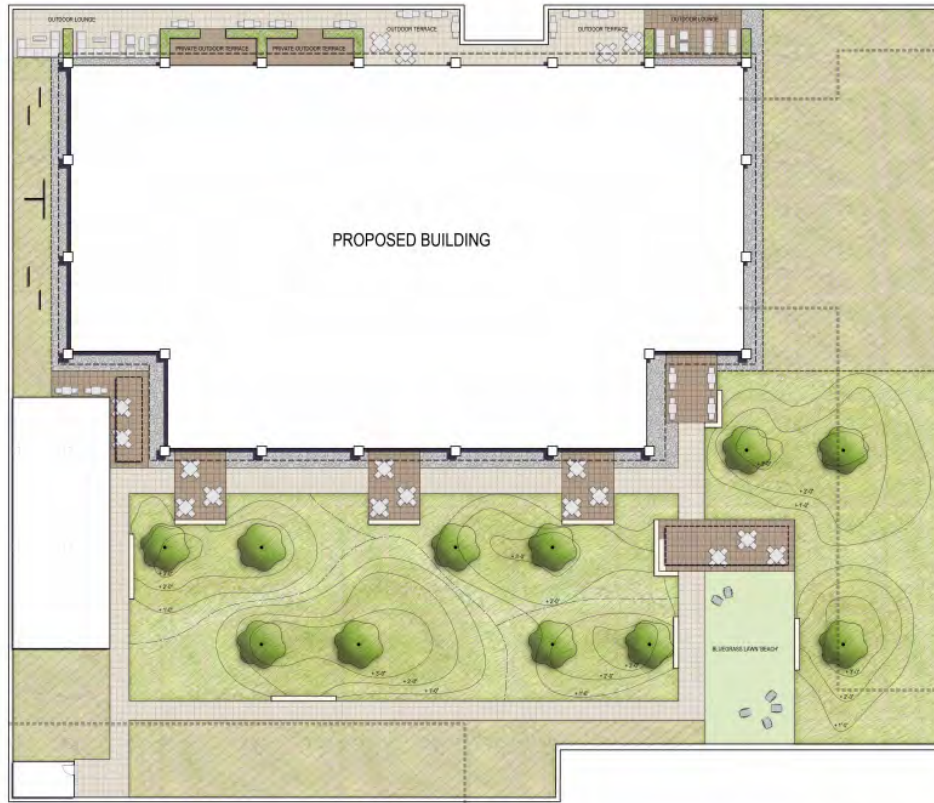
From North-East, looking South-West (above)

From South-West, looking North-East (below)





Fourth Floor Green Roof Plan



LEGEND

- SEDUM CARPET OVER 6-8" OF EXTENSIVE GROWING MEDIA
- BLUEGRASS LAWN
- STONE MULCH
- MEADOW OVER 24" OF INTENSIVE GROWING MEDIA
- PROPOSED TREE
- L-SHAPE ALUMINUM EDGE
- RETAINING / SEAT WALL, 1.5' HT. TYP.
- PHASE 2 BUILDING EXPANSION LIMITS
- STRUCTURAL BUILDING COLUMN
- OVERHEAD SHADE STRUCTURE
- POTENTIAL WALKING PATH THROUGH MEADOW

1 4TH FLOOR GREEN ROOF PLAN
SCALE: 1"=10'-0" (1/8"=1'-0") (1/4"=1'-0") (1/2"=1'-0")



Building Amenities:

- Stone & Glass Exterior
- Capitol & Lake Views
- Green Roof - Terrace
- Experience Concerts at Breese Stevens from the Common Area Terrace
- Shared Conference Room
- Exercise Facility
- Lockers & Showers
- Heated Bike Storage
- Close to Capitol City Trail
- Bus Stop 1 Block Away
- On Future BRT Route
- Covered Parking



Fourth Floor Terrace Overlooking Breese Stevens Field

CONTACT



Matt Brink | mcbriink@360cres.com | 608.658.7431 (c)

Janine Punzel, CCIM | jkpunzel@360cres.com | 608.212.8336 (c)

701 E. Washington Avenue, Suite LL2, Madison, WI 53703 | 608.807.0660 (o)



Commute to **Downtown Madison**
6 min 15 min 11 min 38 min View Routes

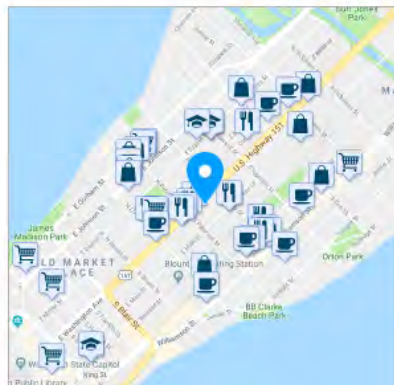
Favorite Map Nearby Apartments

Looking for a home for sale in Madison?

Walk Score 89
Very Walkable
Most errands can be accomplished on foot.

Transit Score 54
Good Transit
Many nearby public transportation options.

Bike Score 100
Biker's Paradise



Amenities within a 5-minute Walking Radius (solid line)
10-minute walk to Lake Mendota or Lake Monona (dotted)

929 East Washington Avenue has a Walk Score of 89 out of 100. This location is Very Walkable so most errands can be accomplished on foot.

This location is in the Marquette neighborhood in Madison. Nearby parks include Breese Stevens Field, Reynolds Park and Central Park.



DISCLOSURE TO NON-RESIDENTIAL CUSTOMERS

1 Prior to negotiating on your behalf the brokerage firm, or an agent associated with the firm, must provide you the
2 following disclosure statement:

3 **DISCLOSURE TO CUSTOMERS** You are a customer of the brokerage firm (hereinafter Firm). The Firm is either an agent
4 of another party in the transaction or a subagent of another firm that is the agent of another party in the transaction. A
5 broker or a salesperson acting on behalf of the Firm may provide brokerage services to you. Whenever the Firm is
6 providing brokerage services to you, the Firm and its brokers and salespersons (hereinafter Agents) owe you, the
7 customer, the following duties:

8 (a) The duty to provide brokerage services to you fairly and honestly.

9 (b) The duty to exercise reasonable skill and care in providing brokerage services to you.

10 (c) The duty to provide you with accurate information about market conditions within a reasonable time if you request
11 it, unless disclosure of the information is prohibited by law.

12 (d) The duty to disclose to you in writing certain Material Adverse Facts about a property, unless disclosure of the
13 information is prohibited by law (see lines 42-51).

14 (e) The duty to protect your confidentiality. Unless the law requires it, the Firm and its Agents will not disclose your
15 confidential information or the confidential information of other parties (see lines 23-41).

16 (f) The duty to safeguard trust funds and other property held by the Firm or its Agents.

17 (g) The duty, when negotiating, to present contract proposals in an objective and unbiased manner and disclose the
18 advantages and disadvantages of the proposals.

19 Please review this information carefully. An Agent of the Firm can answer your questions about brokerage services,
20 but if you need legal advice, tax advice, or a professional home inspection, contact an attorney, tax advisor, or home
21 inspector. This disclosure is required by section 452.135 of the Wisconsin statutes and is for information only. It is a
22 plain-language summary of the duties owed to a customer under section 452.133(1) of the Wisconsin statutes.

23 **CONFIDENTIALITY NOTICE TO CUSTOMERS** The Firm and its Agents will keep confidential any information given to the
24 Firm or its Agents in confidence, or any information obtained by the Firm and its Agents that a reasonable person
25 would want to be kept confidential, unless the information must be disclosed by law or you authorize the Firm to
26 disclose particular information. The Firm and its Agents shall continue to keep the information confidential after the
27 Firm is no longer providing brokerage services to you.

28 The following information is required to be disclosed by law:

29 1. Material Adverse Facts, as defined in Wis. Stat. § 452.01(5g) (see lines 42-51).

30 2. Any facts known by the Firm or its Agents that contradict any information included in a written inspection
31 report on the property or real estate that is the subject of the transaction.

32 To ensure that the Firm and its Agents are aware of what specific information you consider confidential, you may
33 list that information below (see lines 35-41) or provide that information to the Firm or its Agents by other means. At a
34 later time, you may also provide the Firm or its Agents with other Information you consider to be confidential.

35 **CONFIDENTIAL INFORMATION:** _____
36 _____
37 _____

38 **NON-CONFIDENTIAL INFORMATION** (the following information may be disclosed by the Firm and its Agents): _____
39 _____
40 _____

41 _____ (Insert information you authorize to be disclosed, such as financial qualification information.)
42 _____

42 **DEFINITION OF MATERIAL ADVERSE FACTS**

43 A "Material Adverse Fact" is defined in Wis. Stat. § 452.01(5g) as an Adverse Fact that a party indicates is of such
44 significance, or that is generally recognized by a competent licensee as being of such significance to a reasonable
45 party, that it affects or would affect the party's decision to enter into a contract or agreement concerning a transaction
46 or affects or would affect the party's decision about the terms of such a contract or agreement.

47 An "Adverse Fact" is defined in Wis. Stat. § 452.01(1e) as a condition or occurrence that a competent licensee
48 generally recognizes will significantly and adversely affect the value of the property, significantly reduce the structural
49 integrity of improvements to real estate, or present a significant health risk to occupants of the property; or information
50 that indicates that a party to a transaction is not able to or does not intend to meet his or her obligations under a
51 contract or agreement made concerning the transaction.

52 **NOTICE ABOUT SEX OFFENDER REGISTRY** You may obtain information about the sex offender registry and persons
53 registered with the registry by contacting the Wisconsin Department of Corrections on the Internet at
54 <http://www.doc.wi.gov> or by telephone at 608-240-5830.

No representation is made as to the legal validity of any provision or the adequacy of any provision in any specific transaction.
Copyright © 2016 by Wisconsin REALTORS® Association Drafted by Attorney Debra Peterson Conrad