

316 W. WASHINGTON AVE.  
SUITE 710  
MADISON, WI 53703



# 316 W Washington Ave Suite 700 Madison, WI

## Sublease

### Space Profile

#### Premises

8,000 SF  
\*Note: the suite could be divisible down to 4,000 or 6,000 SF. The suite could also be expanded up to 12,000 SF

#### Rental Rate

Negotiable

#### Rental Type

All expense included (Taxes, insurance, maintenance, janitorial, HVAC)  
- Only expense not included is in-suite electric (estimated at \$1.25 / SF)

#### Availability

Negotiable

#### Term

Negotiable

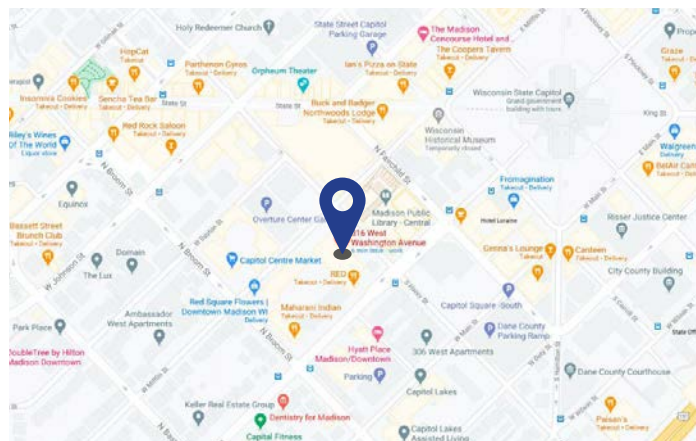
#### Submarket

Central Business District

#### Parking

Underground parking stalls are available for monthly rent – exact rental rate and number of stalls is negotiable

### Map



### For More Information

**Cresa**  
613 Williamson Street  
Suite 210  
Madison, WI 53703  
[cresa.com/madison](http://cresa.com/madison)



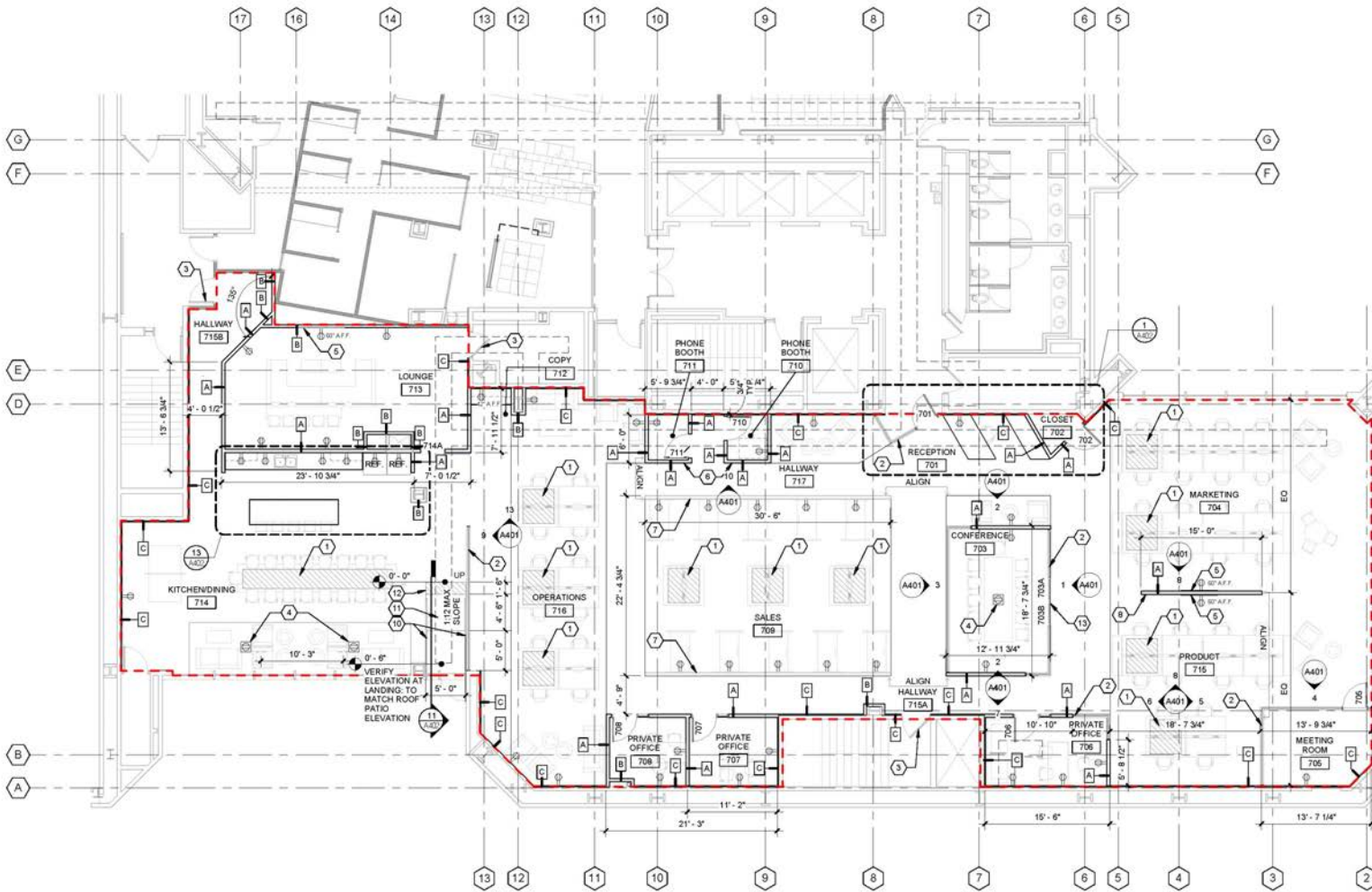
**Ross Rikers**  
608.239.7724  
[rrikkers@cresa.com](mailto:rrikkers@cresa.com)

### Features

- Located in one of Madison's most desirable buildings
- Exceptionally high ceilings with glass walled offices and industrial "feel"
- Suite has private balcony looking due west
- High end kitchen and game room
- Very bright suite with some private offices and a few separate "bull-pens"
- Building includes a gym, indoor/heated bike parking, common area board room (40+ people), massage, fitness and restaurant/bar on retail level

Even though obtained from sources deemed reliable, no warranty or representation, express or implied, is made as to the accuracy of the information herein, and it is subject to errors, omissions, change of price, rental or other conditions, withdrawal without notice, and to any special listing conditions imposed by our principals.





1 SEVENTH FLOOR  
1/8" = 1'-0"





316 W Washington Ave  
Suite 700  
Madison, WI



### For More Information

**Cresa**  
613 Williamson Street  
Suite 210  
Madison, WI 53703  
[cresa.com/madison](http://cresa.com/madison)



**Ross Ridders**  
608.239.7724  
[ridders@cresa.com](mailto:ridders@cresa.com)