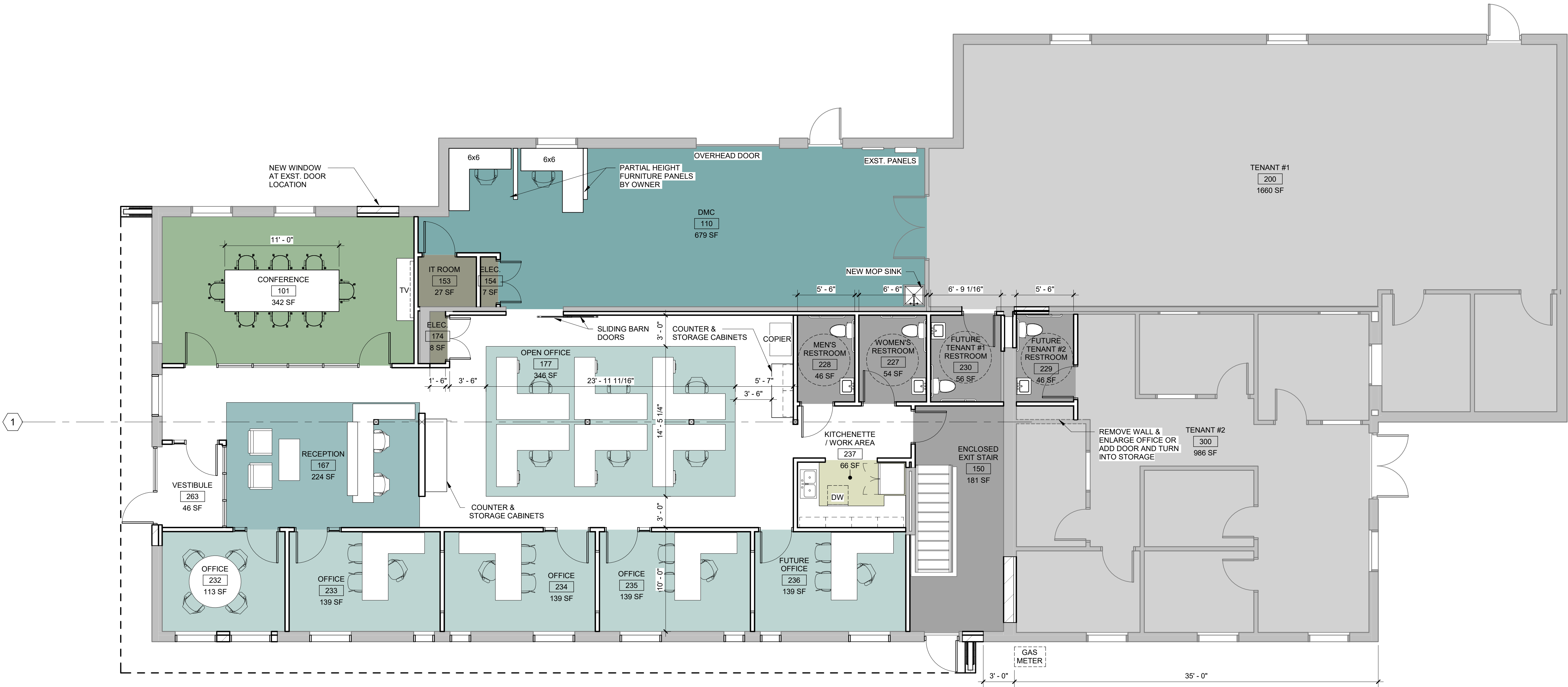


FLOOR PLAN GENERAL NOTES:

1. SITE DATUM OF 'XXX' = FLOOR EL. 100' - 0" ON ARCHITECTURAL DRAWINGS.
2. FIELD VERIFY ALL DIMENSIONS. BRING ANY DISCREPANCIES TO THE ATTENTION OF THE ARCHITECT / ENGINEER FOR FINAL DECISION.
3. SEE SHEET A001 FOR PARTITION TYPES.
4. SEE SHEET A002 FOR DOOR SCHEDULE AND WINDOW TYPES AND DETAILS.
5. SEE SHEET A111 FOR REFLECTED CEILING PLAN.
6. SEE SHEET A121 FOR FINISH PLAN AND SCHEDULES.
7. DIMENSIONS ON FLOOR PLAN ARE BASED ON FACE OF FINISH WALL TO FINISHED WALL (NOMINAL).
8. REFER TO DEMOLITION SHEETS FOR COORDINATION OF DEMOLITION SCOPE.
9. REFER TO MECHANICAL, ELECTRICAL, AND PLUMBING DRAWINGS FOR ADDITIONAL ITEMS AND NOTES.
10. CONTRACTORS ARE RESPONSIBLE FOR MAINTAINING CONTINUOUS UTILITY SERVICE TO ALL SPACES IN THE BUILDING NOT AFFECTED BY THIS WORK. ANY DISRUPTION IN SERVICE REQUIRED TO PERFORM WORK OR TO MODIFY EXISTING DUCTWORK, PIPING, CONDUIT, CIRCUITS OR ANY ASSOCIATED EQUIPMENT, MUST BE COORDINATED IN ADVANCE WITH THE OWNER/ USER.

KEYED NOTES #



No.	Description	Date

TAILORED
ENGINEERING

1600 N. HIGH POINT

Madison, WI 53703

FIRST FLOOR PLAN

SCHEMATIC PLAN	
Project number	MHH-20-01
Date	9/30/2020

A101