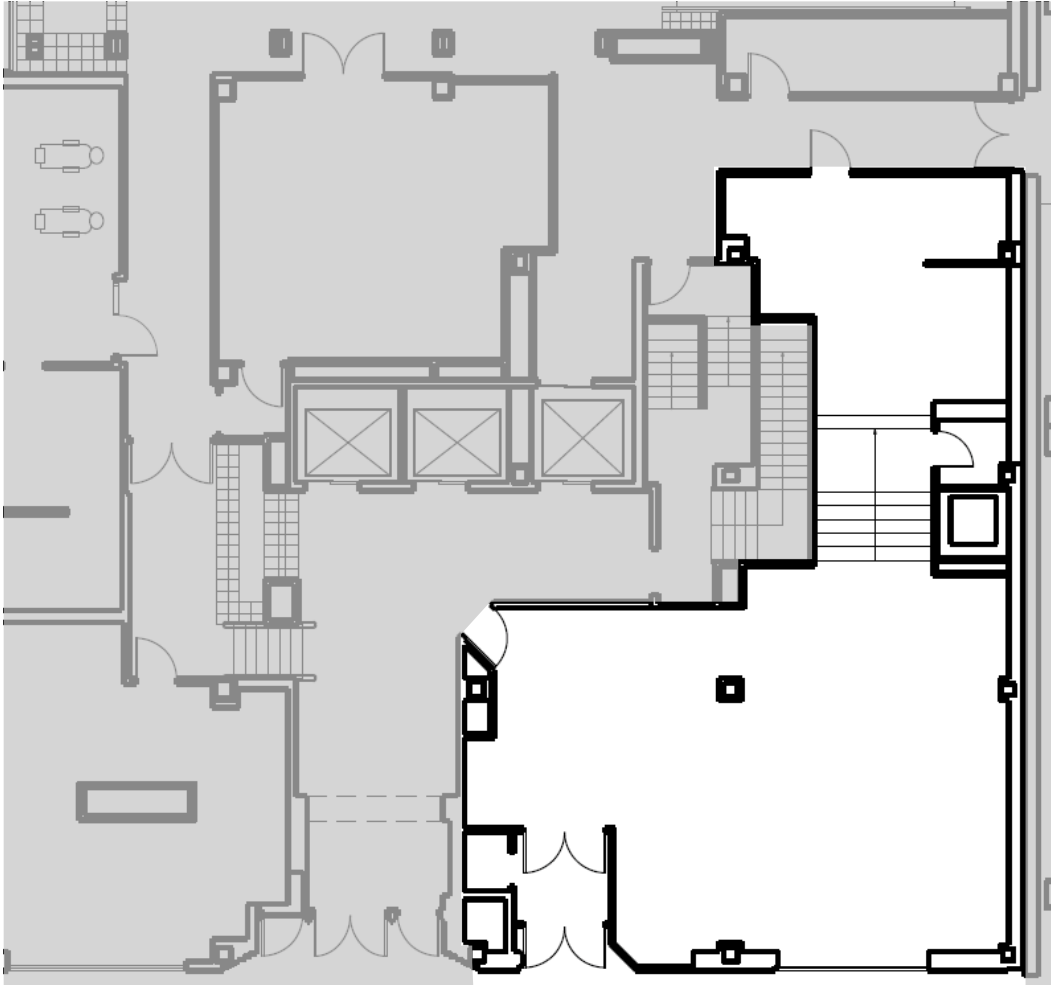


TENNEY PLAZA

Suite 114 • 1,723 RSF • Available Now



SUITE FEATURES

- First floor suite with both direct street access and an indoor entrance off of the building lobby
- Fully furnished restaurant space with appliances



Urban Land Interests

10 East Doty Street, Suite 300

Madison, WI 53703

608.251.0706

www.uli.com