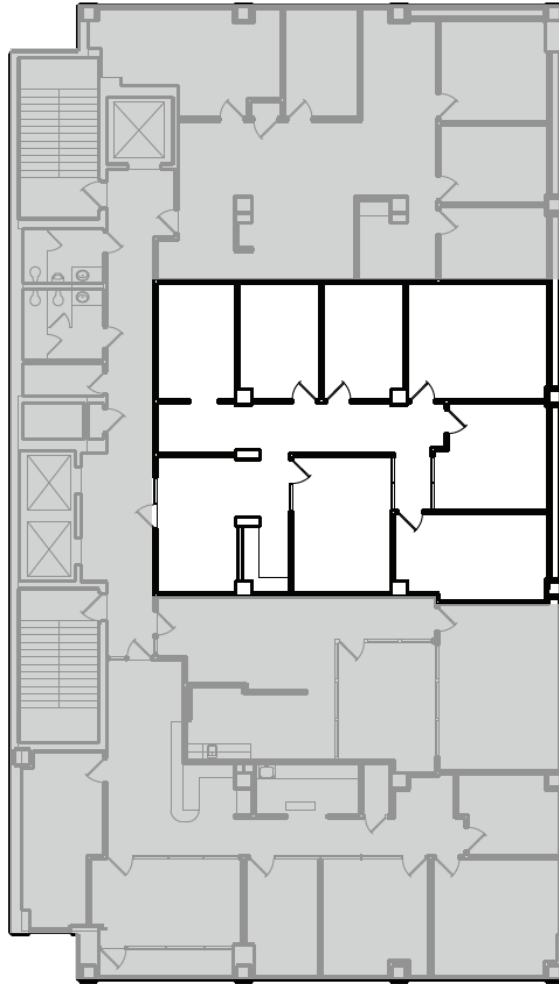


44 EAST MIFFLIN

Suite 605 • 2,266 RSF • Available Now



SUITE FEATURES

- Two exterior offices, three interior offices
- One exterior conference room, one interior conference room
- Reception area
- Modified Gross



Urban Land Interests

10 East Doty Street, Suite 300

Madison, WI 53703

608.251.0706

www.uli.com