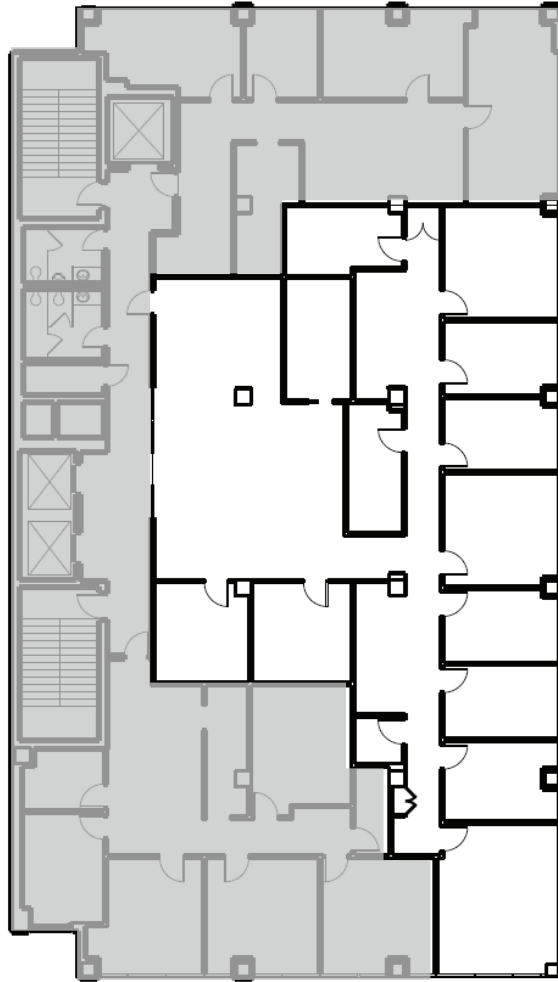


44 EAST MIFFLIN

Suite 905 • 4,230 RSF • Available Now



SUITE FEATURES

- Floor-to-ceiling windows with stunning views
- 8 exterior offices, including a corner office with Capitol view
- 3 interior offices or meeting rooms
- Open, flexible workspace
- Modified Gross

VIRTUAL TOUR

- To view a virtual tour visit:
<https://bit.ly/ULI-44-905>



Urban Land Interests

10 East Doty Street, Suite 300

Madison, WI 53703

608.251.0706

www.uli.com