

10 EAST DOTY

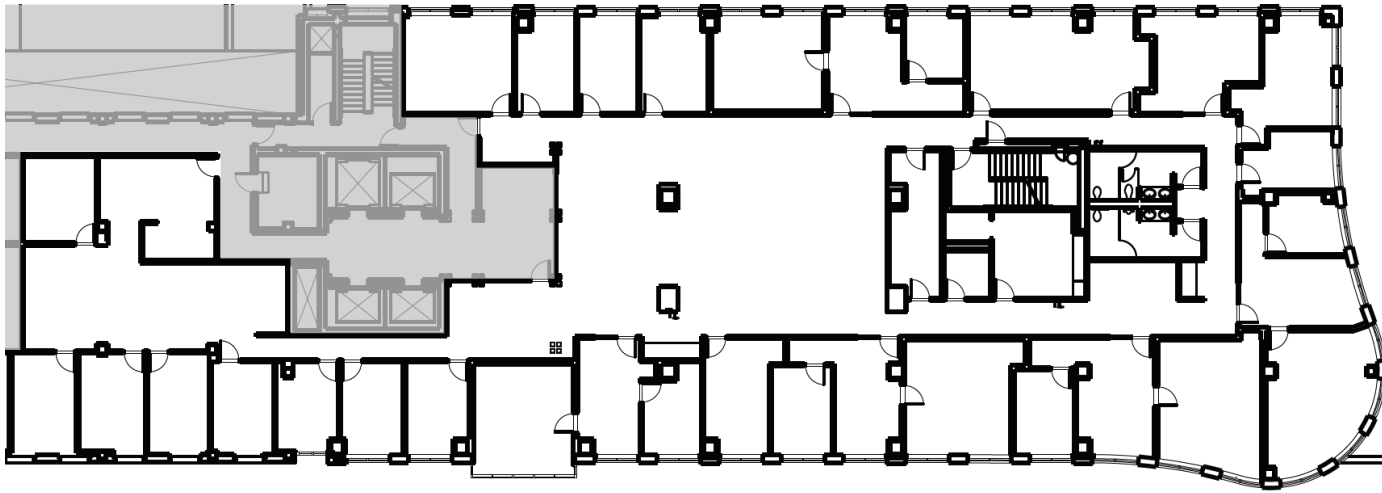
Suite 700 • 15,316 RSF • Available Now

SUITE FEATURES

- 31 exterior offices and two interior offices
- Kitchen and storage rooms
- In-suite restrooms
- Large open area for workstations
- Modified Gross

VIRTUAL TOUR

- To view a virtual tour visit:
<http://bit.ly/ULI-DOTY-700>



Urban Land Interests

10 East Doty Street, Suite 300

Madison, WI 53703

608.251.0706

www.uli.com