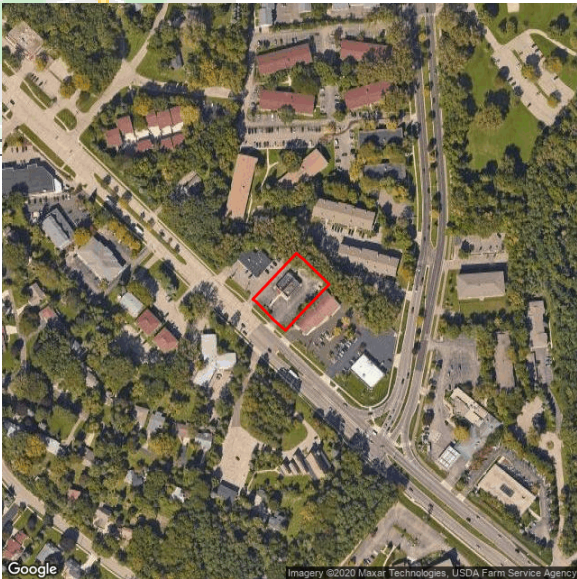


Demographic Report



6230 University Ave

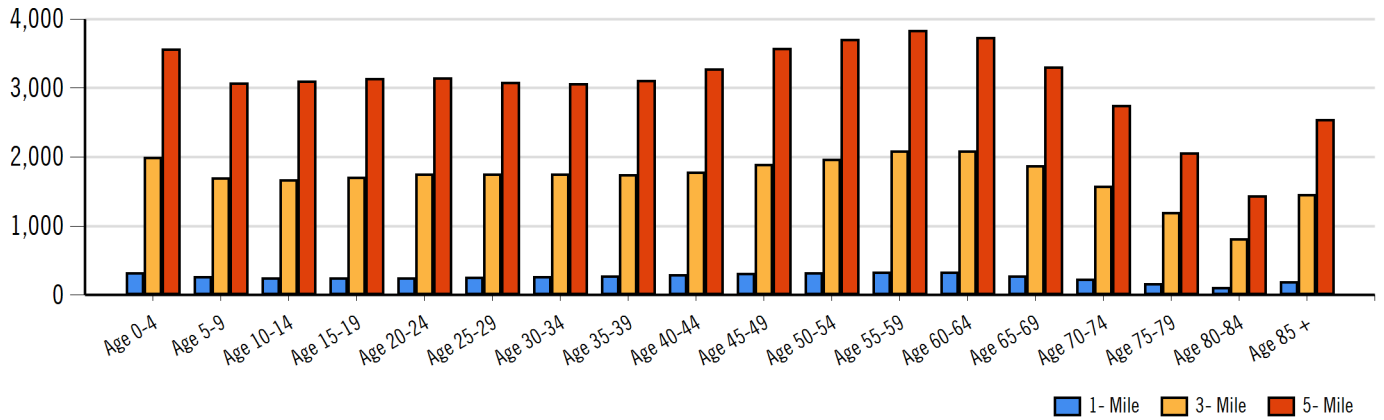


Population

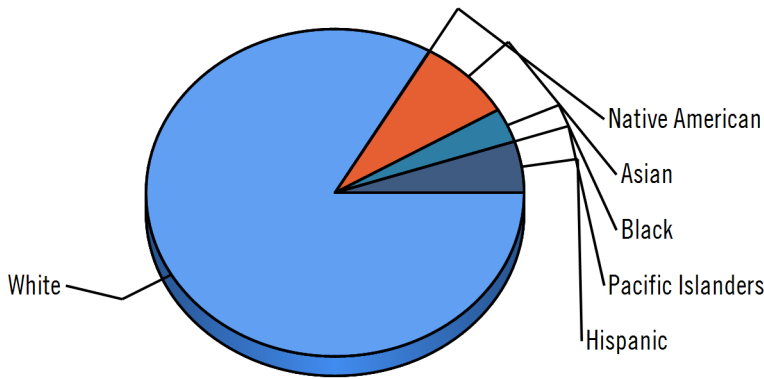
Distance	Male	Female	Total
1- Mile	2,234	2,571	4,805
3- Mile	14,776	16,158	30,934
5- Mile	26,517	29,105	55,622



Population by Distance and Age (2018)

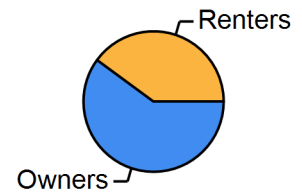


Ethnicity within 5 miles

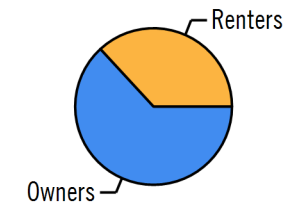


White Native American Asian Black Pacific Islanders Hispanic

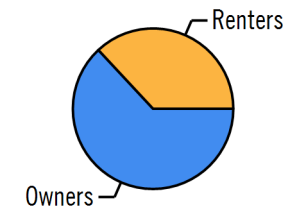
Home Ownership 1 Mile



Home Ownership 3 Mile



Home Ownership 5 Mile



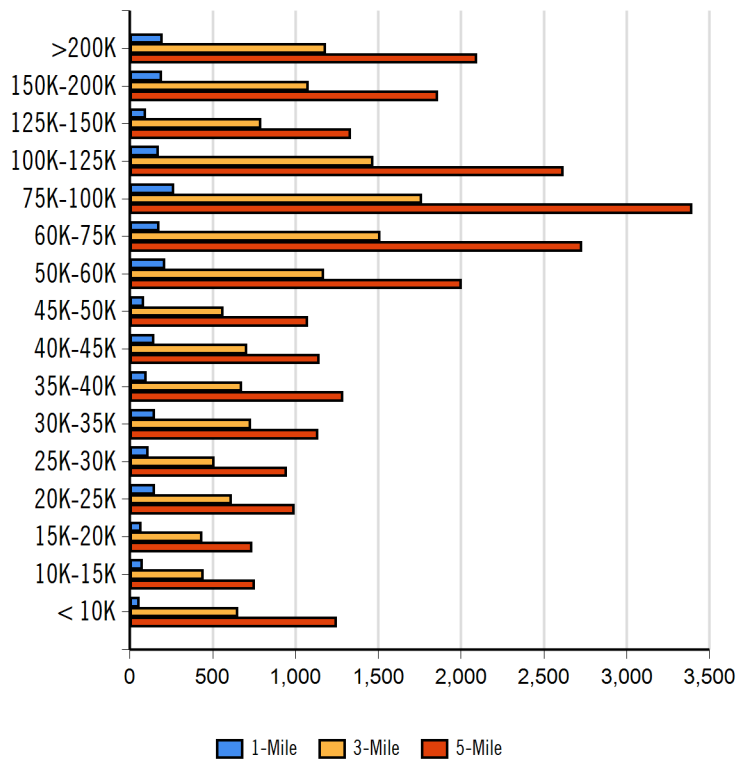
Employment by Distance

Distance	Employed	Unemployed	Unemployment Rate
1-Mile	2,675	92	1.74 %
3-Mile	17,180	479	2.10 %
5-Mile	31,150	751	2.11 %

Labor & Income

	Agriculture	Mining	Construction	Manufacturing	Wholesale	Retail	Transportation	Information	Professional	Utility	Hospitality	Pub-Admin	Other
1-Mile	40	10	113	207	75	268	66	89	291	918	230	96	135
3-Mile	159	25	346	1,200	398	1,537	234	489	2,301	6,571	1,133	926	907
5-Mile	237	57	607	1,958	566	2,771	507	925	4,224	12,667	1,722	1,658	1,586

Household Income



Radius	Median Household Income
1-Mile	\$65,917.80
3-Mile	\$77,829.71
5-Mile	\$78,821.39

Radius	Average Household Income
1-Mile	\$89,358.40
3-Mile	\$94,931.58
5-Mile	\$93,251.08

Radius	Aggregate Household Income
1-Mile	\$194,582,713.05
3-Mile	\$1,230,441,111.01
5-Mile	\$2,177,015,057.10

Education

	1-Mile	3-mile	5-mile
Pop > 25	3,438	22,076	39,559
High School Grad	404	2,620	4,328
Some College	849	3,804	6,310
Associates	256	1,490	2,547
Bachelors	861	6,586	12,174
Masters	514	3,566	7,061
Prof. Degree	223	1,472	2,464
Doctorate	73	795	1,735

Tapestry

	1-Mile	3-mile	5-mile
Vacant Ready For Rent	32 %	48 %	55 %
Teen's	40 %	66 %	75 %
Expensive Homes	15 %	26 %	24 %
Mobile Homes	0 %	0 %	0 %
New Homes	26 %	59 %	64 %
New Households	46 %	76 %	84 %
Military Households	0 %	0 %	0 %
Households with 4+ Cars	14 %	40 %	40 %
Public Transportation Users	46 %	105 %	142 %
Young Wealthy Households	25 %	27 %	32 %

This Tapestry information compares this selected market against the average. If a tapestry is over 100% it is above average for that statistic. If a tapestry is under 100% it is below average.

Expenditures

	1-Mile	%	3-Mile	%	5-Mile	%
Total Expenditures	119,152,645		761,952,050		1,350,415,418	
Average annual household	54,241		56,791		56,178	
Food	6,991	12.89 %	7,284	12.83 %	7,207	12.83 %
Food at home	4,438		4,563		4,529	
Cereals and bakery products	632		649		645	
Cereals and cereal products	225		231		229	
Bakery products	407		418		415	
Meats poultry fish and eggs	884		907		899	
Beef	206		212		210	
Pork	156		158		157	
Poultry	168		172		170	
Fish and seafood	145		151		149	
Eggs	70		72		71	
Dairy products	455		470		467	
Fruits and vegetables	901		931		925	
Fresh fruits	132		137		136	
Processed vegetables	169		173		172	
Sugar and other sweets	162		165		164	
Fats and oils	141		144		143	
Miscellaneous foods	832		854		848	
Nonalcoholic beverages	370		376		374	
Food away from home	2,553		2,721		2,677	
Alcoholic beverages	400		429		423	
Housing	19,129	35.27 %	19,825	34.91 %	19,659	34.99 %
Shelter	11,630		12,073		11,963	
Owned dwellings	7,141		7,522		7,438	
Mortgage interest and charges	3,608		3,827		3,789	
Property taxes	2,439		2,566		2,532	
Maintenance repairs	1,093		1,128		1,117	
Rented dwellings	3,400		3,377		3,382	
Other lodging	1,089		1,173		1,142	
Utilities fuels	4,311		4,394		4,381	
Natural gas	414		426		423	
Electricity	1,696		1,715		1,712	
Fuel oil	174		180		179	
Telephone services	1,340		1,366		1,363	
Water and other public services	687		706		703	
Household operations	1,353	2.49 %	1,425	2.51 %	1,408	2.51 %
Personal services	401		430		424	
Other household expenses	952		995		983	
Housekeeping supplies	662		682		673	
Laundry and cleaning supplies	171		175		174	
Other household products	389		402		396	
Postage and stationery	100		104		102	
Household furnishings	1,171		1,248		1,232	
Household textiles	87		94		92	
Furniture	289		313		305	
Floor coverings	34		36		35	
Major appliances	133		137		138	
Small appliances	103		108		106	
Miscellaneous	523		558		553	
Apparel and services	1,460	2.69 %	1,542	2.72 %	1,521	2.71 %
Men and boys	296		314		308	
Men 16 and over	247		261		256	
Boys 2 to 15	49		52		51	
Women and girls	530		557		549	



6230 University Ave



ABSTRACT Commercial Real Estate

132 E Wilson St Madison, WI 53703 | 608-239-4781

Women 16 and over	460	487	478
Girls 2 to 15	69	70	71
Children under 2	97	98	97

Expenditures (Continued)

	1-Mile	%	3-Mile	%	5-Mile	%
Total Expenditures	119,152,645		761,952,050		1,350,415,418	
Average annual household	54,241		56,791		56,178	
Transportation	7,269	13.40 %	7,597	13.38 %	7,537	13.42 %
Vehicle purchases	1,767		1,880		1,859	
Cars and trucks new	955		1,010		996	
Cars and trucks used	769		826		818	
Gasoline and motor oil	2,208		2,264		2,261	
Other vehicle expenses	2,705		2,814		2,796	
Vehicle finance charges	182		190		190	
Maintenance and repairs	967		1,010		999	
Vehicle insurance	1,198		1,235		1,231	
Vehicle rental leases	358		378		373	
Public transportation	588		637		620	
Health care	4,048	7.46 %	4,174	7.35 %	4,153	7.39 %
Health insurance	2,638		2,708		2,695	
Medical services	865		904		900	
Drugs	408		420		417	
Medical supplies	136		142		140	
Entertainment	3,153	5.81 %	3,303	5.82 %	3,279	5.84 %
Fees and admissions	675		734		718	
Television radios	1,061		1,082		1,082	
Pets toys	1,159		1,215		1,204	
Personal care products	705		740		731	
Reading	63		66		65	
Education	1,654		1,804		1,742	
Tobacco products	398		390		391	
Miscellaneous	903	1.66 %	940	1.66 %	927	1.65 %
Cash contributions	1,413		1,462		1,456	
Personal insurance	6,650		7,228		7,079	
Life and other personal insurance	179		193		191	
Pensions and Social Security	6,470		7,035		6,887	

Estimated Households					Housing Occupied By		Housing Occupancy		
Distance	Year	Projection	2000	Change	1 Person	Family	Owner	Renter	Vacant
1-Mile	2020	4,587	4,144	10.47 %	1,653	2,526	2,883	1,704	546
3-Mile	2020	19,763	17,834	9.10 %	6,808	11,193	12,356	7,407	2,319
5-Mile	2020	30,194	27,095	10.08 %	9,687	17,647	19,492	10,702	3,333
1-Mile	2023	4,683	4,144	12.76 %	1,690	2,575	2,957	1,726	682
3-Mile	2023	20,038	17,834	10.76 %	6,898	11,352	12,583	7,455	3,034
5-Mile	2023	30,670	27,095	11.80 %	9,830	17,925	19,878	10,792	4,564



Heather Ewing, CCIM
Heather@ABSTRACT-CRE.com
608-239-4781



This information supplied herein is from sources we deem reliable. It is provided without any representation, warranty or guarantee, expressed or implied as to its accuracy. Prospective Buyer or Tenant should conduct an independent investigation and verification of all matters deemed to be material, including, but not limited to, statements of income and expenses. Consult your attorney, accountant, or other prof. advisor.