

Demographic Report



Lamphouse

Population

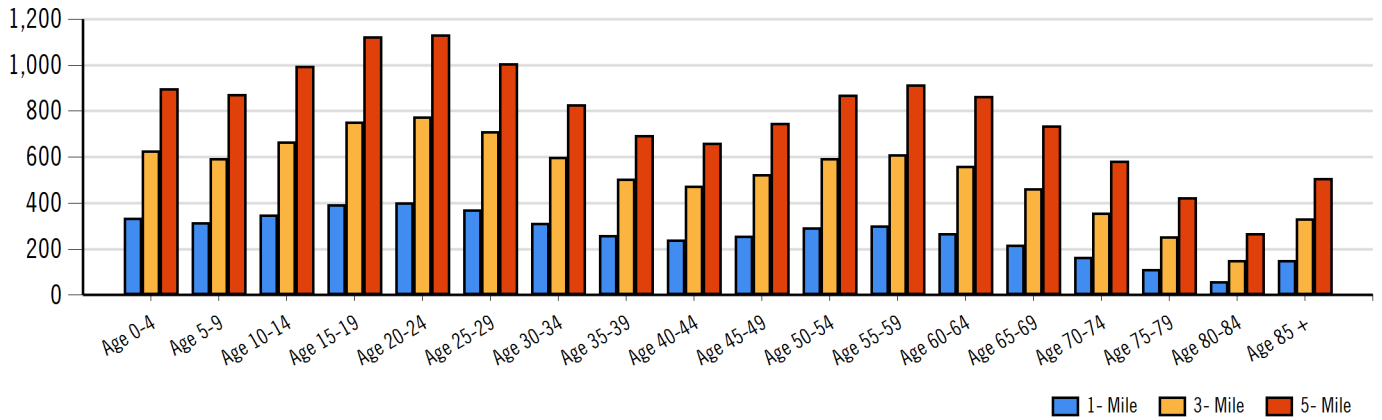
Distance	Male	Female	Total
1- Mile	2,315	2,503	4,818
3- Mile	4,702	4,863	9,564
5- Mile	7,117	7,023	14,140



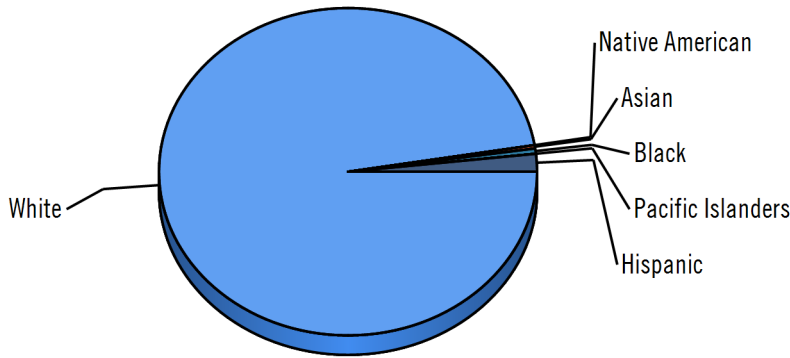
Heather Ewing, CCIM  
Heather@ABSTRACT-CRE.com  
608-239-4781



## Population by Distance and Age (2018)



## Ethnicity within 5 miles

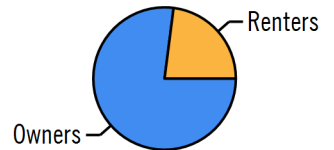


White Native American Asian Black Pacific Islanders Hispanic

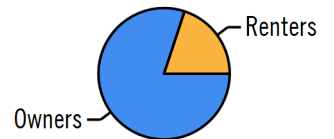
### Home Ownership 1 Mile



### Home Ownership 3 Mile



### Home Ownership 5 Mile



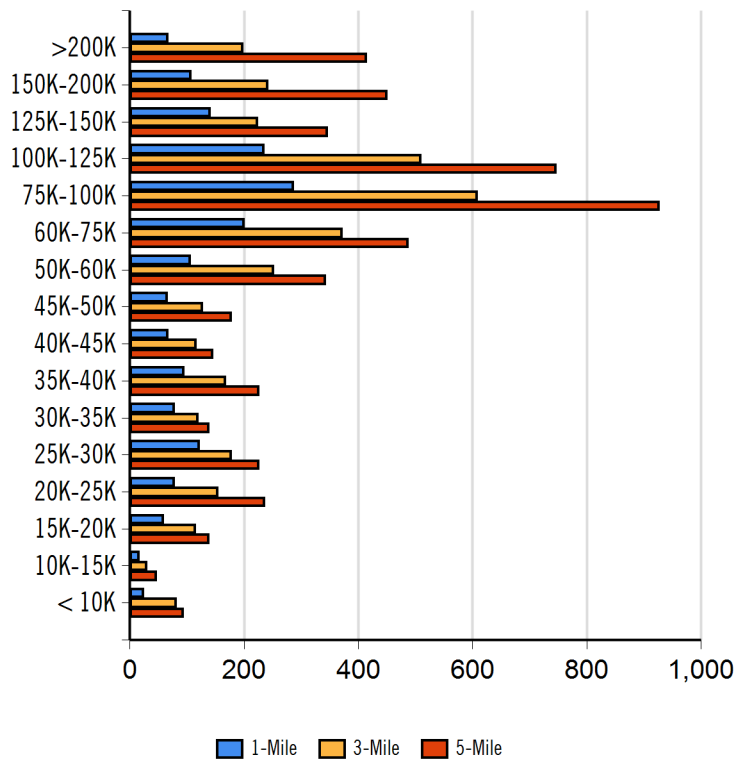
## Employment by Distance

Distance	Employed	Unemployed	Unemployment Rate
1-Mile	2,614	47	1.55 %
3-Mile	5,249	97	1.24 %
5-Mile	7,751	159	1.44 %

## Labor & Income

	Agriculture	Mining	Construction	Manufacturing	Wholesale	Retail	Transportation	Information	Professional	Utility	Hospitality	Pub-Admin	Other
1-Mile	16	2	250	295	45	233	52	38	339	573	171	160	138
3-Mile	40	2	511	568	130	505	128	84	639	1,205	319	266	268
5-Mile	102	4	736	800	195	807	212	155	954	1,730	421	384	356

## Household Income



Radius	Median Household Income
1-Mile	\$62,401.67
3-Mile	\$87,585.67
5-Mile	\$87,517.50

Radius	Average Household Income
1-Mile	\$78,045.33
3-Mile	\$92,793.00
5-Mile	\$92,390.00

Radius	Aggregate Household Income
1-Mile	\$149,057,403.59
3-Mile	\$312,160,842.81
5-Mile	\$495,616,696.98

## Education

	1-Mile	3-mile	5-mile
Pop > 25	3,019	6,145	9,115
High School Grad	723	1,484	2,325
Some College	722	1,445	2,080
Associates	321	732	1,142
Bachelors	725	1,396	1,969
Masters	122	317	500
Prof. Degree	33	88	149
Doctorate	33	53	79

## Tapestry

	1-Mile	3-mile	5-mile
Vacant Ready For Rent	24 %	23 %	25 %
Teen's	76 %	66 %	75 %
Expensive Homes	0 %	0 %	0 %
Mobile Homes	0 %	7 %	16 %
New Homes	81 %	115 %	176 %
New Households	66 %	54 %	57 %
Military Households	32 %	28 %	24 %
Households with 4+ Cars	19 %	36 %	48 %
Public Transportation Users	0 %	1 %	2 %
Young Wealthy Households	0 %	31 %	76 %

This Tapestry information compares this selected market against the average. If a tapestry is over 100% it is above average for that statistic. If a tapestry is under 100% it is below average.

## Expenditures

	1-Mile	%	3-Mile	%	5-Mile	%
<b>Total Expenditures</b>	92,294,081		189,243,196		291,556,811	
<b>Average annual household</b>	51,054		57,027		56,731	
<b>Food</b>	6,606	12.94 %	7,313	12.82 %	7,269	12.81 %
Food at home	4,279		4,612		4,592	
Cereals and bakery products	609		657		654	
Cereals and cereal products	216		233		232	
Bakery products	393		424		422	
Meats poultry fish and eggs	847		902		897	
Beef	199		210		209	
Pork	154		159		159	
Poultry	157		169		167	
Fish and seafood	136		150		148	
Eggs	69		73		73	
Dairy products	435		479		476	
Fruits and vegetables	871		946		942	
Fresh fruits	128		139		139	
Processed vegetables	165		175		174	
Sugar and other sweets	159		168		168	
Fats and oils	136		146		145	
Miscellaneous foods	804		865		863	
Nonalcoholic beverages	364		383		381	
Food away from home	2,327		2,701		2,677	
Alcoholic beverages	372		430		428	
<b>Housing</b>	18,160	35.57 %	19,834	34.78 %	19,760	34.83 %
Shelter	10,932		12,014		11,967	
Owned dwellings	6,721		7,621		7,591	
Mortgage interest and charges	3,412		3,934		3,925	
Property taxes	2,258		2,575		2,558	
Maintenance repairs	1,051		1,112		1,107	
Rented dwellings	3,307		3,279		3,282	
Other lodging	903		1,114		1,094	
Utilities fuels	4,247		4,449		4,447	
Natural gas	402		432		430	
Electricity	1,679		1,727		1,727	
Fuel oil	165		180		179	
Telephone services	1,327		1,393		1,394	
Water and other public services	673		716		715	
<b>Household operations</b>	1,268	2.48 %	1,430	2.51 %	1,421	2.50 %
Personal services	377		440		437	
Other household expenses	891		989		984	
Housekeeping supplies	614		676		669	
Laundry and cleaning supplies	166		179		178	
Other household products	361		399		395	
Postage and stationery	86		98		96	
Household furnishings	1,097		1,262		1,253	
Household textiles	80		95		94	
Furniture	241		304		298	
Floor coverings	27		35		34	
Major appliances	139		140		143	
Small appliances	90		100		99	
Miscellaneous	518		587		584	
<b>Apparel and services</b>	1,382	2.71 %	1,554	2.73 %	1,537	2.71 %
Men and boys	273		327		322	
Men 16 and over	229		276		272	
Boys 2 to 15	44		51		50	
Women and girls	487		546		539	

ABSTRACT Commercial Real Estate		132 E Wilson St Madison, WI 53703   608-239-4781	
Women 16 and over	409	469	462
Girls 2 to 15	77	76	77
Children under 2	89	94	94

## Expenditures (Continued)

	1-Mile	%	3-Mile	%	5-Mile	%
<b>Total Expenditures</b>	92,294,081		189,243,196		291,556,811	
<b>Average annual household</b>	51,054		57,027		56,731	
<b>Transportation</b>	7,042	13.79 %	7,766	13.62 %	7,743	13.65 %
Vehicle purchases	1,685		1,971		1,957	
Cars and trucks new	860		1,034		1,024	
Cars and trucks used	784		889		883	
Gasoline and motor oil	2,194		2,316		2,320	
Other vehicle expenses	2,659		2,860		2,859	
Vehicle finance charges	181		195		196	
Maintenance and repairs	925		1,023		1,017	
Vehicle insurance	1,212		1,252		1,257	
Vehicle rental leases	341		390		387	
Public transportation	503		617		605	
<b>Health care</b>	3,967	7.77 %	4,255	7.46 %	4,250	7.49 %
Health insurance	2,581		2,737		2,733	
Medical services	848		940		940	
Drugs	408		435		434	
Medical supplies	129		143		142	
<b>Entertainment</b>	3,085	6.04 %	3,403	5.97 %	3,396	5.99 %
Fees and admissions	598		732		723	
Television radios	1,062		1,103		1,107	
Pets toys	1,136		1,256		1,250	
Personal care products	664		752		746	
Reading	58		64		63	
Education	1,300		1,665		1,621	
Tobacco products	400		392		393	
<b>Miscellaneous</b>	807	1.58 %	898	1.57 %	895	1.58 %
<b>Cash contributions</b>	1,327		1,434		1,439	
<b>Personal insurance</b>	5,880		7,261		7,185	
Life and other personal insurance	182		199		199	
Pensions and Social Security	5,698		7,062		6,986	

Estimated Households					Housing Occupied By		Housing Occupancy		
Distance	Year	Projection	2000	Change	1 Person	Family	Owner	Renter	Vacant
1-Mile	2020	3,012	2,590	13.68 %	621	2,276	2,253	759	168
3-Mile	2020	5,776	5,004	12.96 %	1,143	4,418	4,669	1,107	344
5-Mile	2020	7,090	6,225	11.50 %	1,347	5,451	5,752	1,338	457
1-Mile	2023	3,106	2,590	17.24 %	641	2,348	2,324	782	188
3-Mile	2023	5,896	5,004	15.32 %	1,169	4,509	4,794	1,102	456
5-Mile	2023	7,232	6,225	13.69 %	1,376	5,559	5,909	1,323	620