



Lake Hills West Medical Center

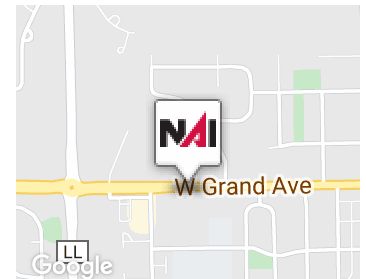
1317 W. Grand Ave Port Washington, Wisconsin 53074

Property Highlights

- Professional setting for a wide range of office and/or medical users
- Convenient, ample parking with drive thru canopy drop off area
- Well maintained property managed by a local, highly reputable management group
- Vaulted ceilings and skylights in main lobby
- Lots of natural light
- Monument Signage along Highway 33
- Touchless automatic sliding entry doors

Property Overview

Lake Hills West Medical Suite 6 offers private offices, seven exam rooms, reception area, one full bathroom and two restrooms, break room, laboratories, Diagnostic Imaging/ x-ray room, a dark room, a medical records room and access to waiting area in shared lobby. This medical complex offers everything a medical practice needs including easy access and high visibility along Highway 33 (Grand Ave). Other tenants in this building include Ascension physical therapy, Dr. Josh Luette D.D.S., Port Washington Podiatry, Lakeshore Wellness and Recovery, and Breakwater Academy.



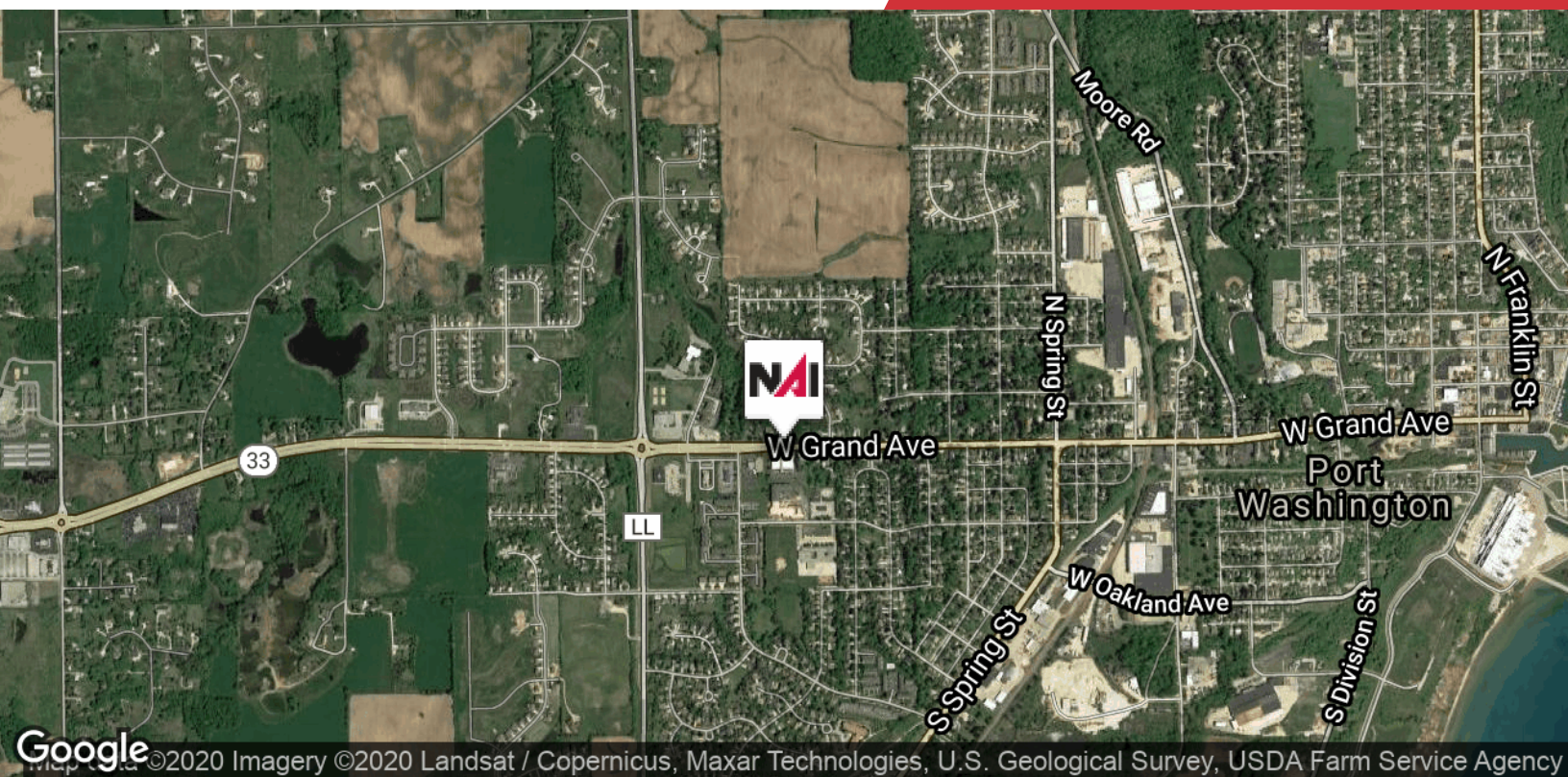
Lease Rate:	\$14.00 SF/yr (NNN)
Building Size:	21,834 SF
Available SF:	5,700 SF

For More Information

Dawn Davis

O: 414 238 2151

dawn.davis@naigreywolf.com



Driving Distances

Enter City Here:

Enter Distance Here

Location Advantages

- Add Bullets Here

Flexible Deal Structures

- Add Bullets Here

For More Information

Dawn Davis

O: 414 238 2151

dawn.davis@naigreywolf.com