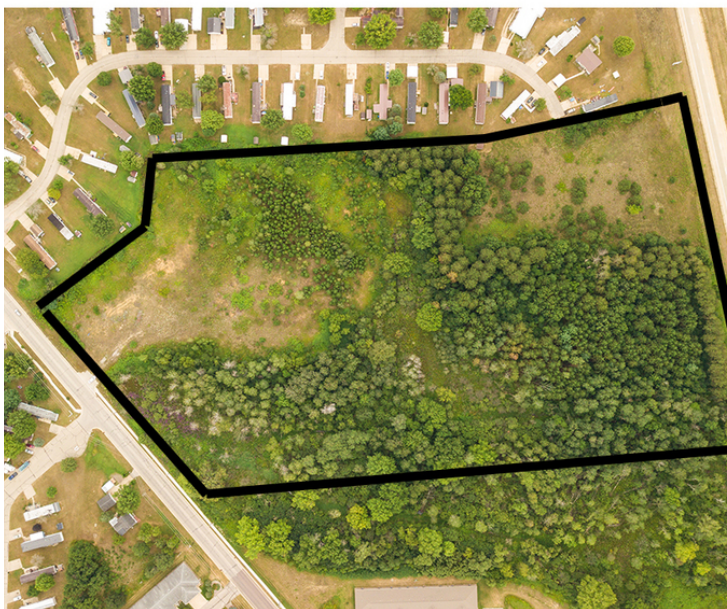




00 AVON RD

Sparta, WI 54656

SALE



OFFERING SUMMARY

Sale Price: \$249,900

Lot Size: 17.26 Acres

Zoning: Commercial B2

Market: Business District

Price / SF: \$0.33

PROPERTY OVERVIEW

Looking for a place to build storage unit? Look no further, 17+ acres of level land just off interstate 90, and backs up to I-90 so High Visibility! near Fort McCoy. Just in case you want to build something else, all utilities available at the lot line. Other uses could be: Amusement and Recreation Services, Automobile Service Station, Business Services, Clubs and Organizations, Convenience Stores, Day Care Centers, Garden Supplies, Hobby Shop, Hotels and Motels, Manufacturing in enclosed building (no outside storage) Parking Parks Professional Services, Professional Offices, Recreational Facilities (Indoor) Restaurants, Retail Trade, Veterinary Hospital and Clinic, Essential Service Facilities plus many more conditional uses.

PROPERTY HIGHLIGHTS

- Interstate Access
- Retail
- Office
- Warehouse
- Manufacturing
- Recreation

OTHER RESOURCES

CBCWORLDWIDE.COM

Cathy Fox
608 386 8115
cathy@cbrivervalley.com



**COLDWELL
BANKER
COMMERCIAL**

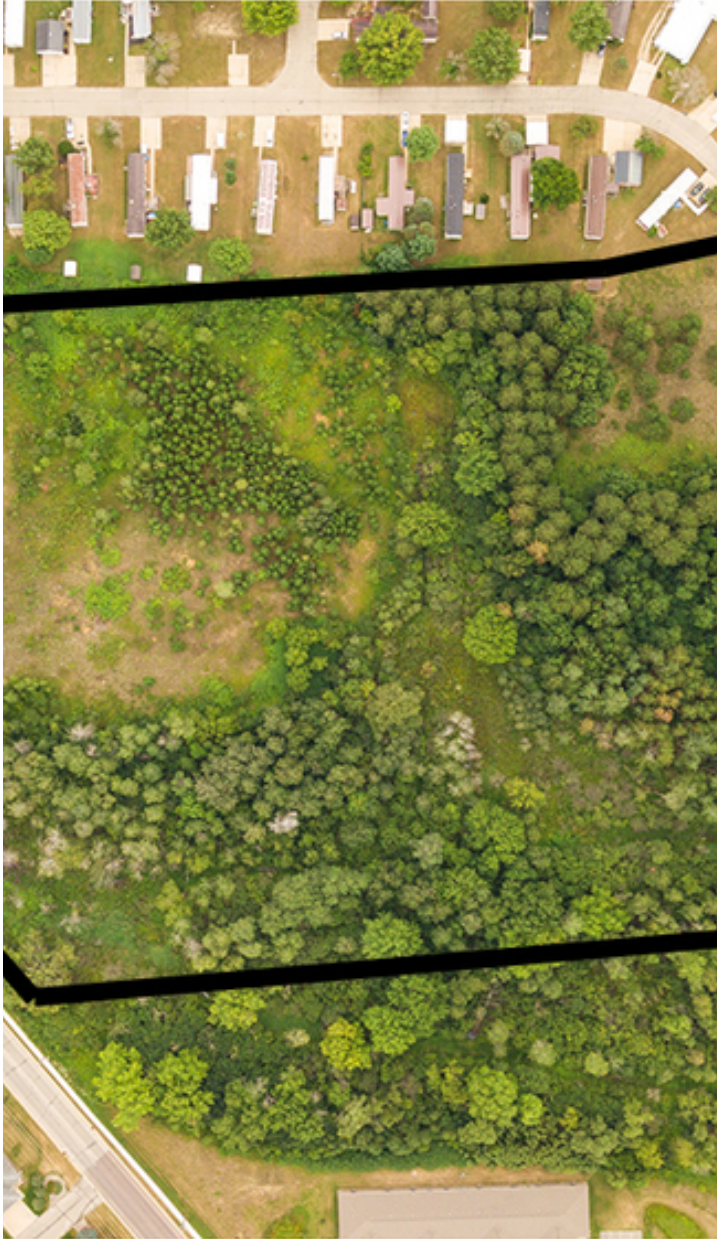
RIVER VALLEY



00 AVON RD

Sparta, WI 54656

SALE



PROPERTY OVERVIEW

Looking for a place to build storage unit? Look no further, 17+ acres of level land just off interstate 90, and backs up to I-90 so High Visibility! near Fort McCoy. Just in case you want to build something else, all utilities available at the lot line. Other uses could be: Amusement and Recreation Services, Automobile Service Station, Business Services, Clubs and Organizations, Convenience Stores, Day Care Centers, Garden Supplies, Hobby Shop, Hotels and Motels, Manufacturing in enclosed building (no outside storage) Parking Parks Professional Services, Professional Offices, Recreational Facilities (Indoor) Restaurants, Retail Trade, Veterinary Hospital and Clinic, Essential Service Facilities plus many more conditional uses.

LOCATION OVERVIEW

I-90 to exit 25 north on highway 27, right on Avon Rd 1/4 mile on right

CBCWORLDWIDE.COM