

HOVDE BUILDING

122 W. WASHINGTON AVE • MADISON, WI



Providing distinguished and professionally managed office space conveniently located in the heart of downtown Madison next to Capital Square

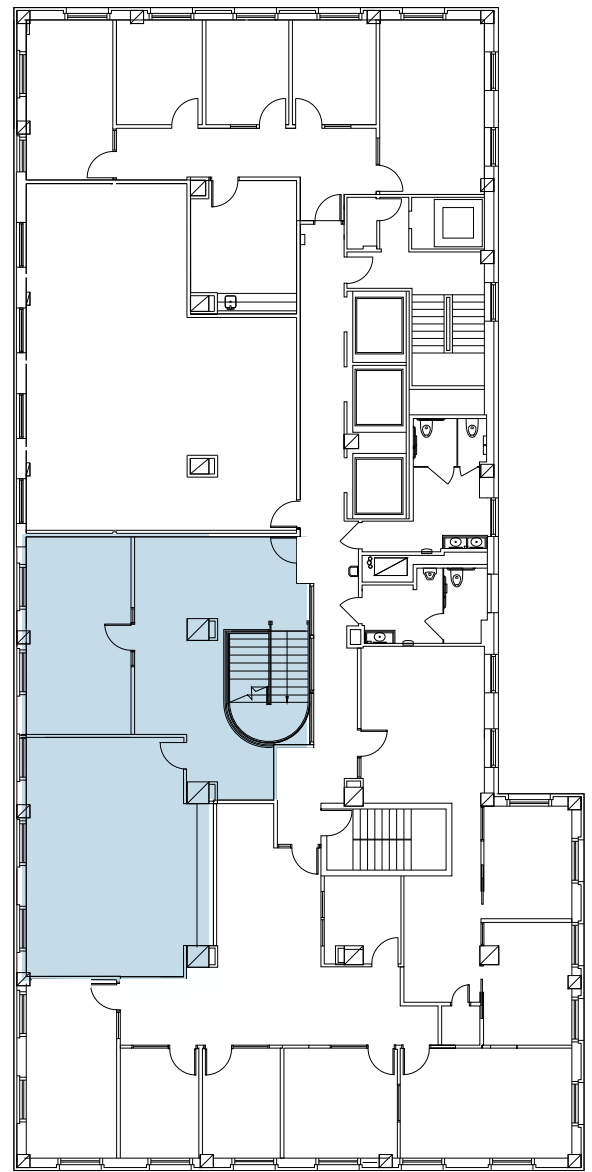
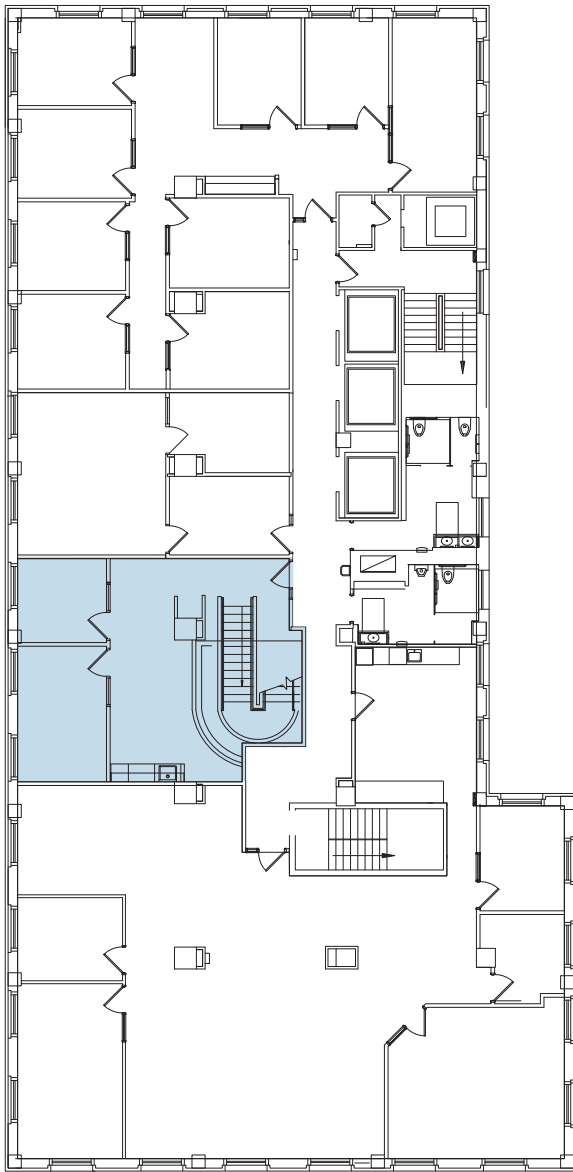
Building Features and Amenities

- Available Cover & Surface Parking
- Controlled Access Bike Parking
- Large Shared Conference Room
- Responsive On-Site Management
- Great Downtown Location
- Capital Views and Lake Views
- Close to State Street, Restaurants, & Retail
- Commuter Lockers & Showers
- Recent Renovations
- On-Site Storage Space

SUITE 620

122 W. WASHINGTON AVE • MADISON, WI

Teamwork • Confidentiality • Discretion • Efficiency • Quality • Direct Communication • Professionalism • Integrity • Pasion



Lease Terms

SUITE 620

- Rentable Square Feet (RSF) : 2,500 SF
- Lease Rate: \$26-28 / RSF (Modified Gross)
- Space Type: Office
- Tenant Pays In-Suite Electric

SUITE 620

122 W. WASHINGTON AVE • MADISON, WI

Teamwork • Confidentiality • Discretion • Efficiency • Quality • Direct Communication • Professionalism • Integrity • Passion



Furnished Private Offices

Move-in ready class AA professional office space for rent that grants you two full floors of infrastructure, 24/7 building access, and assorted amenities.

Meeting and Conference Rooms

Meet clients in your own private office space, or reserve your next board meeting in our HB Conference Room (Available by the hour or day)



Kitchen and Coffee Bar

Enjoy lunch with colleagues, grab a fresh cup of coffee, or just find some extra space to move and think.

For More Images Visit: <https://my.matterport.com/show/?m=Eqa2T92ejGo&brand=0>