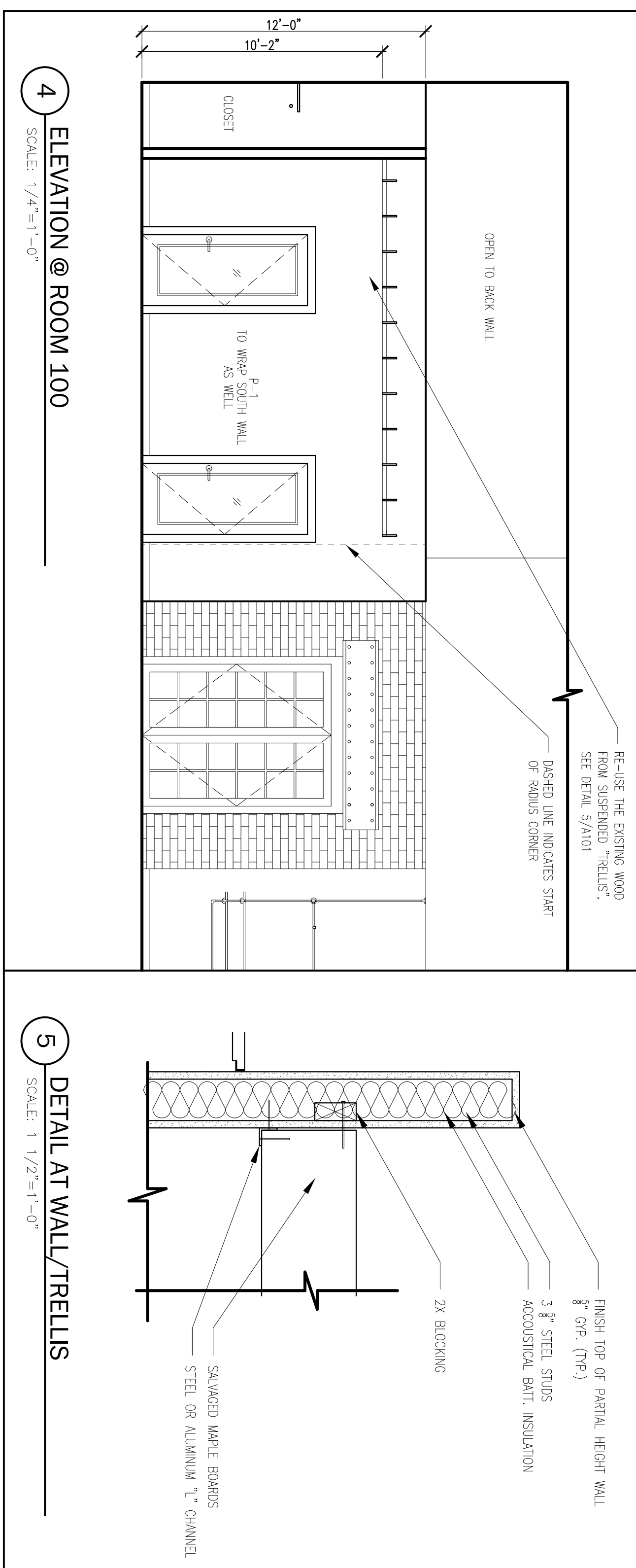
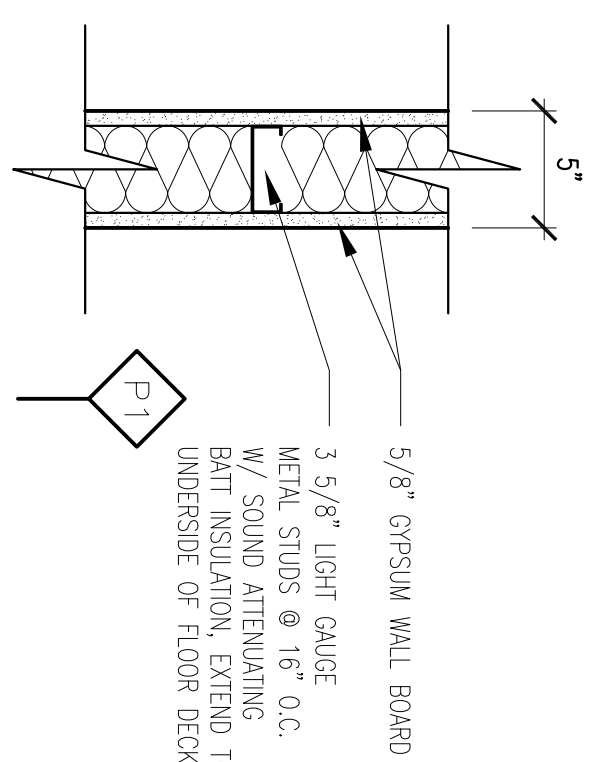


- FLOOR PLAN KEY NOTES:**
1. ALL BRUSHED ALUMINUM TO BE ALTERED FOR NEW SPACE CONFIGURATION
 2. ALL HUNG TO BE ALTERED FOR NEW SPACE CONFIGURATION. COORDINATE WITH ARCHITECT FOR NEW SPACE CONFIGURATION. COORDINATE WITH ARCHITECT FOR NEW SPACE CONFIGURATION.
 3. ALL FIRE PROTECTION TO BE ALTERED FOR NEW SPACE CONFIGURATION.
 4. ALL FIRE PROTECTION TO BE ALTERED FOR NEW SPACE CONFIGURATION.
 5. PROVIDE 6\"/>



| ROOM FINISH SCHEDULE | | CASEWORK | | WALLS | | | CEILING | | HEIGHT | REMARKS | | |
|----------------------|-----------|----------|----------|-------|----------|----------------|---------|------|--------|----------|--------|---------|
| # | ROOM | FLOORING | MATERIAL | BASE | COUNTERS | CABINETS/NORTH | EAST | WEST | SOUTH | MATERIAL | HEIGHT | REMARKS |
| 100 | LOBBY | | CONCRETE | B-1 | NA | P-1 | P-1 | P-1 | P-1 | EXPOSED | NA | |
| 101 | SUITE ONE | | CONCRETE | B-1 | NA | P-1 | P-2 | P-1 | P-1 | ACT-1 | 10'-0" | |
| 102 | SUITE TWO | | CONCRETE | B-1 | NA | P-1 | P-2 | P-1 | P-1 | ACT-1 | 10'-0" | |

- FINISH NOTES:**
1. PATCH, AND FINISH ALL CONCRETE FLOORS THAT NEED TO BE REPAIRED BECAUSE OF DEMOLITION TO BEST MATCH EXISTING CONCRETE FLOORS.

| DOOR SCHEDULE | | FRAME | | HDWR SET | | NOTES | | | | | | |
|---------------|-------|-------|--------|----------|-------|----------|-------------|------|------|-----------|----------------------|--------------------------------|
| MARK | DOOR | W/ | H | THK | MFR | MODEL | TYPE | TYPE | TYPE | HDWR SET | NOTES | |
| 101-1 | 3'-0" | 7'-0" | 1 3/8" | XXXXX | XXXXX | FLUSH | MAPLE | HM | HM | KNOCKDOWN | SCHLAGE - JUPITER AL | CLASSROOM LOCK |
| 101-1 | 3'-0" | 7'-0" | 1 3/8" | XXXXX | XXXXX | WD/GLASS | MAPLE/GLASS | HM | HM | KNOCKDOWN | SCHLAGE - JUPITER AL | FULL GLASS LITE CLASSROOM LOCK |
| 102-1 | 3'-0" | 7'-0" | 1 3/8" | XXXXX | XXXXX | WD/GLASS | MAPLE/GLASS | HM | HM | KNOCKDOWN | SCHLAGE - JUPITER AL | FULL GLASS LITE CLASSROOM LOCK |

KEY:
 AL ALUMINUM
 HDR HOLLOW CORE WOOD
 HM HOLLOW CORE WOOD
 SCMD SOLID CORE WOOD
 WD WOOD
 EX EXISTING TO REMAIN
 MDF MEDIUM DENSITY FIBERBOARD

NOTES:
 ALL HUNG DOORS AS SHOWN ON THE PLAN ARE SIZED TO MEET THE 32" MIN. CLEAR REQUIRED BY ADA/AG WHEN THE DOOR IS OPEN 90°. MEASURED BETWEEN THE FACE OF THE DOOR AND THE OPPOSITE STOP.
 ALL HANDLES, PULLS, LATCHES, LOCKS, AND OTHER OPERATING DEVICES SHALL MEET ADA/AG ACCESSIBILITY GUIDELINES. LEVER OPERATED MECHANISMS, PUSH-TYPE MECHANISMS, AND L-SHAPED HANDLES ARE ACCEPTABLE DESIGNS.

1. DOORS SHOULD BE STAINED/FINISHED TO MATCH EXISTING OVERHEAD TRELLIS
2. LOCK CYLINDERS SHOULD MATCH SO KEYS CAN BE USED IN EITHER SUITE DOOR AND CLOSET
3. FRAMES PAINTED TO MATCH WALLS

| FINISH PRODUCT LIST | | NUMBER | COLOR | NOTES |
|---------------------|--------------------|------------|------------------|---------------------------------------|
| ACT-1 | ACOUSTICAL CEILING | USG | WHITE | USG DX GRID |
| B-1 | BASE | JOHNSONITE | WHITE | |
| P-1 | PAINT - GENERAL | JOHNSONITE | BUENIT UMBER | |
| P-2 | PAINT - ACCENT | JOHNSONITE | REVERE PEWTER | |
| T-2 | TILE | CROSSVILLE | KENDALL CHARCOAL | 4X8 TILE, RUNNING BOND, GROUT TEC 929 |