

For Lease

The
Carey
Group
presents



3815 EAST WASHINGTON AVE. | MADISON, WI

The Carey Group is pleased to offer 1,295 SF for lease in a new highly visible building located in the out-lot of the Hy-Vee parking lot on East Washington Avenue in Madison, Wisconsin, available for immediate occupancy.



The Carey Group
Real Estate Services, LLC

Contact | Kevin Carey

901 Deming Way, Suite 102, Madison, WI 53717

Phone (608) 213-8962

Email kevin@thecareygroup.net

www.thecareygroup.net

3815 EAST WASHINGTON AVE. | MADISON, WI

Offering Details

- | Space Available: Up to 1,295 SF
- | Rental Rate: \$25.00 / SF NNN
- | Tenant Improvement Allowance: Negotiable
- | Parking: 19 Stalls
- | Traffic Counts: 55,400 Vehicle/Day

Property Highlights

Unique opportunity to be co-tenants with Erik's Bikes in a new building at 3815 East Washington Avenue in Madison, WI.

Demographics

	1 Mile	3 Mile	5 Mile
Population	7,898	63,229	112,504
Average HH Income	53,731	53,625	53,893
No. Households	3,321	28,690	50,686



Contact | Kevin Carey

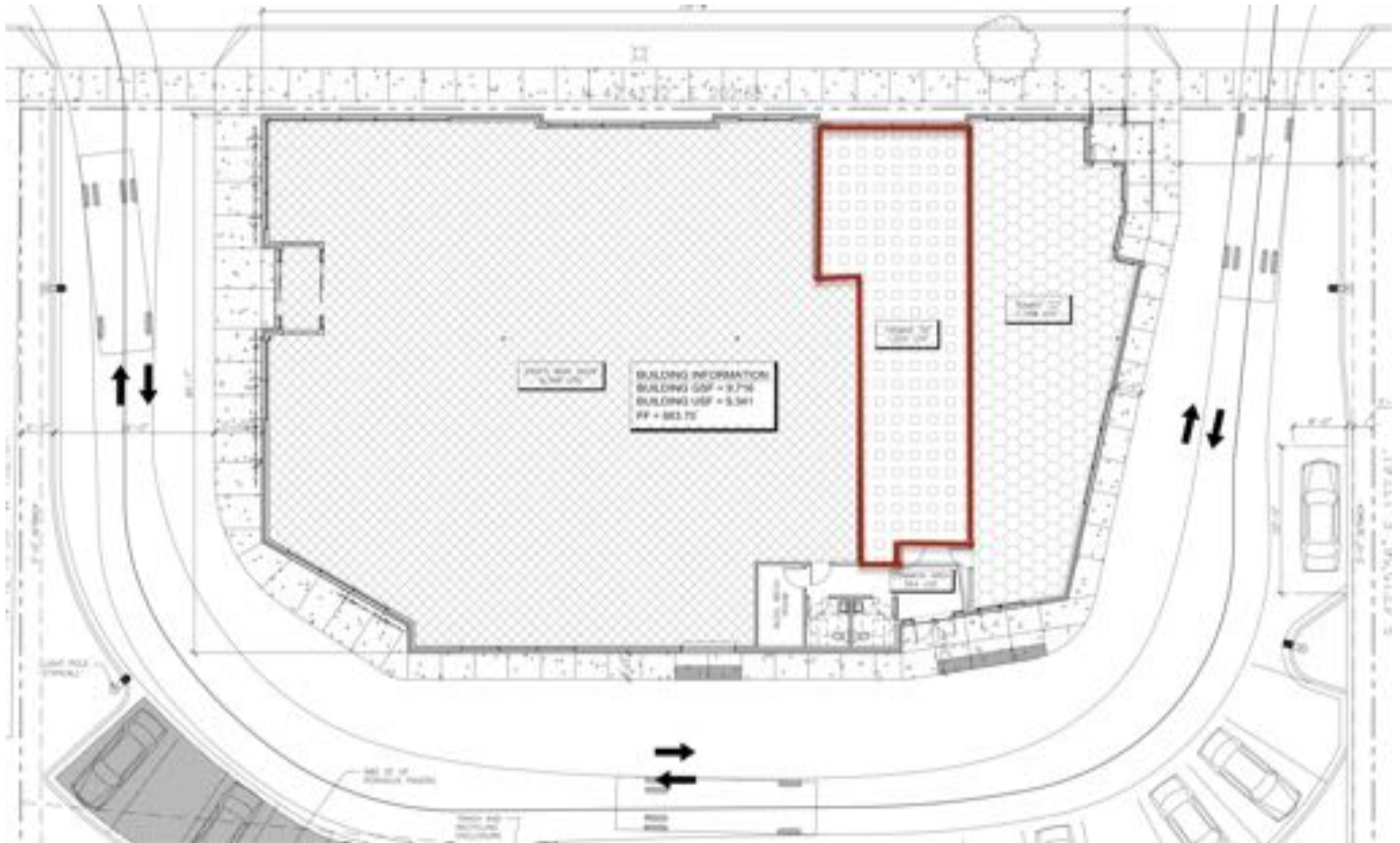
901 Deming Way, Suite 102, Madison, WI 53717

Phone (608) 213-8962

Email kevin@thecareygroup.net

www.thecareygroup.net

3815 EAST WASHINGTON AVE. | MADISON, WI



Contact | Kevin Carey

901 Deming Way, Suite 102, Madison, WI 53717

Phone (608) 213-8962

Email kevin@thecareygroup.net

www.thecareygroup.net

3815 EAST WASHINGTON AVE. | MADISON, WI



Contact | Kevin Carey

901 Deming Way, Suite 102, Madison, WI 53717

Phone (608) 213-8962

Email kevin@thecareygroup.net

www.thecareygroup.net



3815 EAST WASHINGTON AVE.|MADISON, WI

We would love to discuss this property with you.

For more information please contact:

KEVIN CAREY

The Carey Group

Phone (608) 213-8962

Email kevin@thecareygroup.net