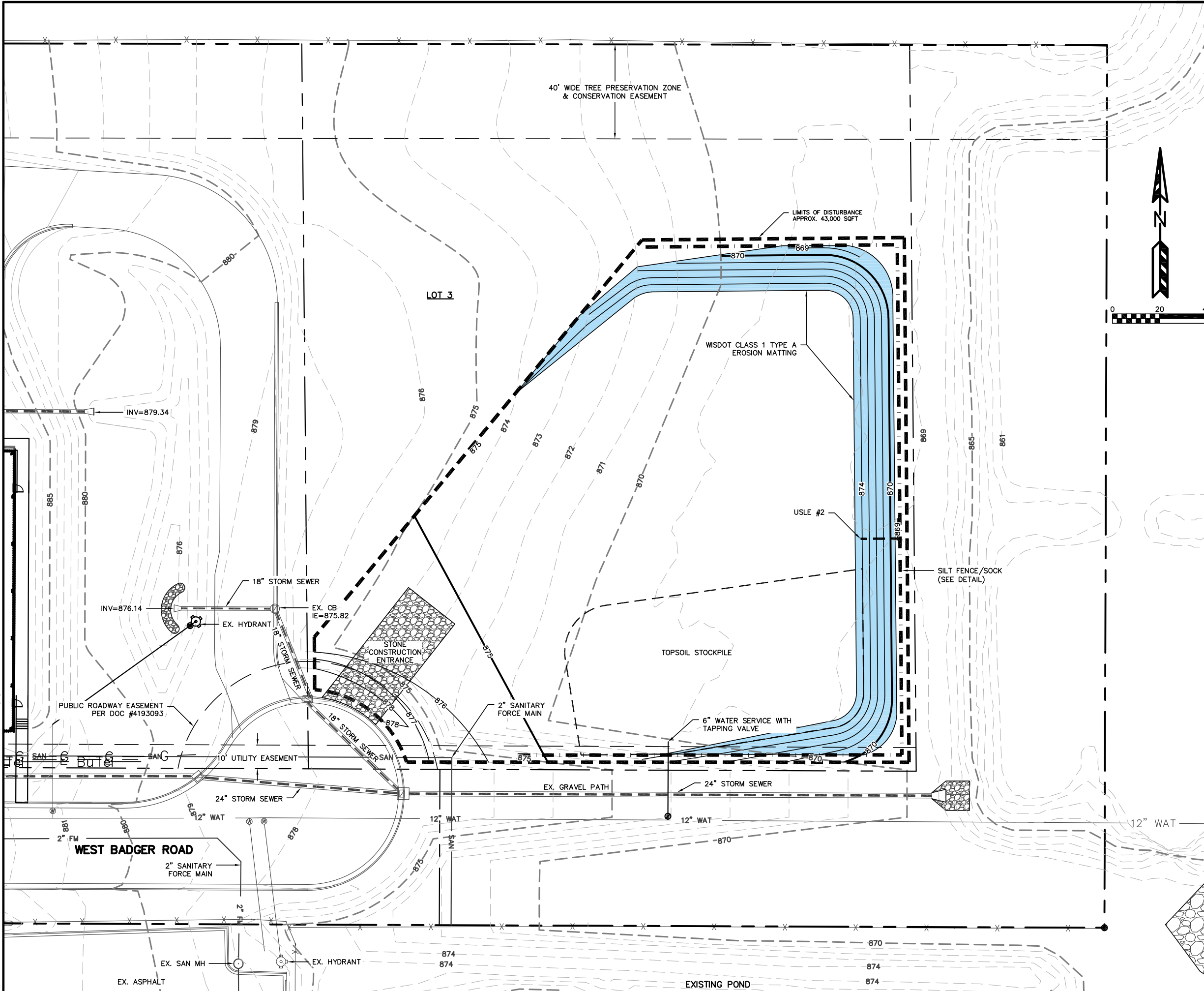


QUAM ENGINEERING, LLC 4604 Siggelkow Road, Suite A - McFarland, WI 53558 (608) 838-7750 \JM-17-18\JM17BASE.DWG



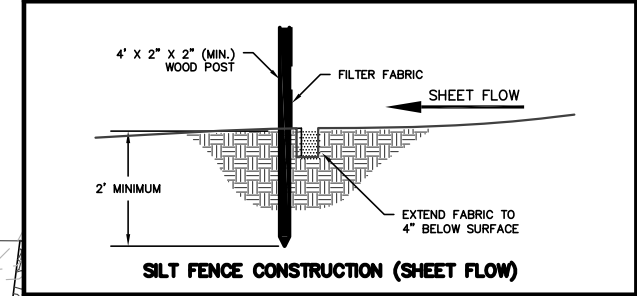
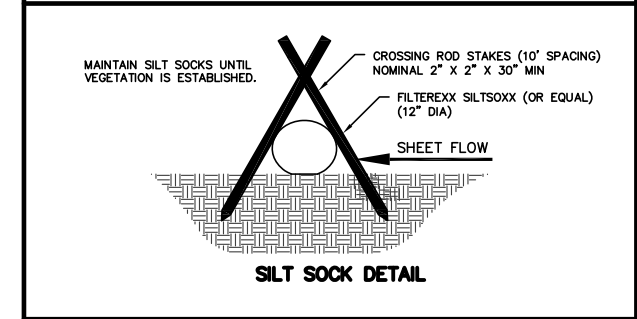
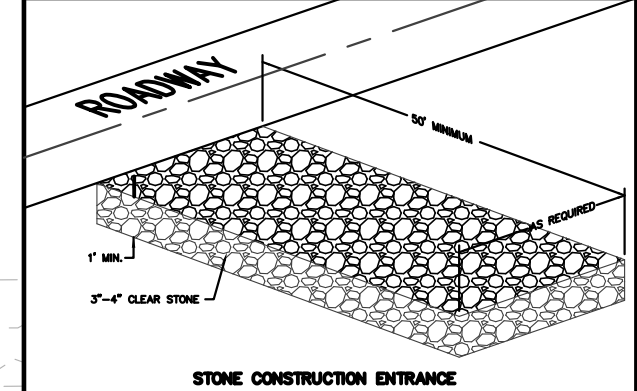
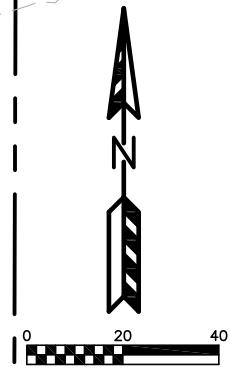
**EROSION NOTES:**  
 THE STONE CONSTRUCTION ENTRANCE SHALL BE INSTALLED PRIOR TO ANY CONSTRUCTION. THE TRACKING PAD IS TO BE MAINTAINED BY THE CONTRACTOR IN A CONDITION, WHICH WILL PREVENT THE TRACK OF MUD OR DRY SEDIMENT ONTO THE ADJACENT PUBLIC STREETS. SEDIMENT REACHING THE PUBLIC ROAD SHALL BE REMOVED BY STREET CLEANING (NOT HYDRAULIC FLUSHING) BEFORE THE END OF EACH WORKDAY.  
 EROSION CONTROL DEVICES SHALL BE INSTALLED PRIOR TO GRADING OPERATIONS AND SHALL BE PROPERLY MAINTAINED FOR MAXIMUM EFFECTIVENESS UNTIL VEGETATION IS ESTABLISHED. ALL EROSION CONTROL MEASURES AND STRUCTURES SERVING THE SITE MUST BE INSPECTED AT LEAST WEEKLY OR WITHIN 24 HOURS OF A 0.5 INCH RAIN EVENT. ALL MAINTENANCE WILL FOLLOW AN INSPECTION WITHIN 24 HOURS.  
 CUT AND FILL SLOPES SHALL BE NO GREATER THAN 3:1.  
 EROSION CONTROL IS THE RESPONSIBILITY OF THE CONTRACTOR UNTIL ACCEPTANCE OF THIS PROJECT. EROSION CONTROL MEASURES AS SHOWN SHALL BE THE MINIMUM PRECAUTIONS THAT WILL BE ALLOWED. THE CONTRACTOR SHALL BE RESPONSIBLE FOR RECOGNIZING AND CORRECTING ALL EROSION CONTROL PROBLEMS THAT ARE A RESULT OF CONSTRUCTION ACTIVITIES. ADDITIONAL EROSION CONTROL MEASURES, AS REQUESTED IN WRITING BY THE STATE OR LOCAL INSPECTORS, OR THE DEVELOPER'S ENGINEER, SHALL BE INSTALLED WITHIN 24 HOURS.

**TIME SCHEDULE:**  
 SEPTEMBER 10, 2018 INSTALL INITIAL EROSION CONTROL DEVICES.  
 SEPTEMBER 11 - NOVEMBER 15, 2018 FILL LOT AREA AND RESTORE PVIOUSLY DISTURBED AREAS.

**RESTORATION NOTES:**  
 ALL PVIOUSLY DISTURBED AREAS SHALL RECEIVE A MINIMUM OF FOUR (4) INCHES OF TOPSOIL, SEED AND MULCH. ALL PVIOUSLY DISTURBED AREAS SHALL RECEIVE FERTILIZER EXCEPT NATIVE PLANTING AREAS. RESTORATION WILL OCCUR AS SOON AFTER THE DISTURBANCE AS PRACTICAL. SEED MIXTURE 40 SHALL BE USED ON ALL OTHER DISTURBED AREAS. MIXTURES SHALL BE IN ACCORDANCE WITH SECTION 630 OF D.O.T. SPECIFICATIONS. AN EQUAL AMOUNT OF ANNUAL RYEGRASS SHALL BE ADDED TO THE MIX.  
 SEED MIXTURES SHALL BE APPLIED AT THE RATE OF FOUR (4) POUNDS PER 1,000 SQUARE FEET. FERTILIZER SHALL BE APPLIED AT THE RATE OF FOUR (4) POUNDS PER 1,000 SQUARE FEET. MULCH SHALL CONSIST OF HAY OR STRAW APPLIED AT THE RATE OF 2 TONS PER ACRE.  
 FERTILIZER SHALL MEET THE MINIMUM REQUIREMENTS THAT FOLLOW: NITROGEN, NOT LESS THAN 16%; PHOSPHORIC ACID, NOT LESS THAN 8%; POTASH, NOT LESS THAN 8%.

**OWNER:**  
 FRITZ MIL, LLC  
 ATTN: JERRY MILLER  
 1129 RED TAIL DRIVE  
 VERONA, WI 53593

**ENGINEER:**  
 QUAM ENGINEERING, LLC  
 ATTN: RYAN QUAM  
 4604 SIGGELKOW ROAD, SUITE A  
 MCFARLAND, WI 53558



**BADGER ROAD DEVELOPMENT**  
 GRADING AND EROSION CONTROL PLAN  
 PAGE: 1 OF 1  
 DATED: SEPTEMBER 13, 2018

**QUAM ENGINEERING, LLC**  
 Residential and Commercial Site Design Consultants  
 www.quamengineering.com  
 4604 Siggelkow Road, Suite A - McFarland, Wisconsin 53558  
 Phone (608) 838-7750; Fax (608) 838-7752