

b

1,650,000

RETAIL / WAREHOUSE
LOT SIZE 43,087 SF
PER ASSESSOR
PARCEL NUMBER
071016400865
PARKING EASEMENT
WITH NEIGHBORING
PROPERTY
BUILT IN 1968
REMODELED 2001
RECENT
IMPROVEMENTS
INCLUDE: PAINTED
BUILDING- RETAIL
AREA BUILT OUT-
TENANT SPACE
BUILT OUT

For
SALE

Multi-Tenant Industrial Building



2425 S Stoughton Rd Madison WI

Features Include:

14 FT OH Door
20,384 SF
432 SF Mezzanine Storage

Best Fit – Owner Occupied Business

Additional Information:

Tenant: Madison Indoor Golf 5,661 SF (9 years left on their lease) Year 2 paying \$38,652/year plus utilities prorate share.

Water to back of building to wash cars/trucks additional storage for boats/trailers/campers

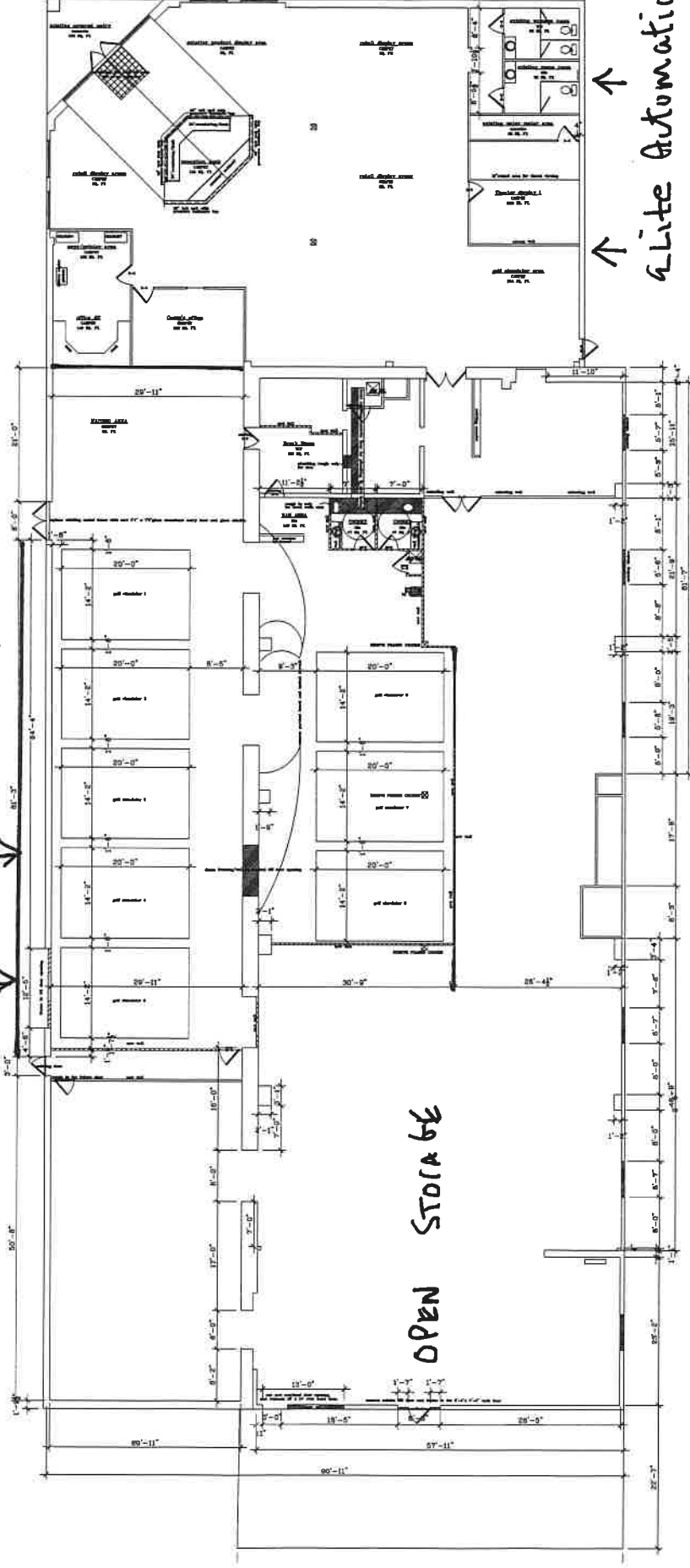


COMPANY

Please call to arrange a private viewing Patrick McCarthy CCIM, Sales Agent 608 345-0467

2425 A STOUTKON RD Floor Plan

MADISON INDOOR GOLF 5,661 SF



9915

1C

[illegible]

Building

[illegible][illegible]

9915