

FOR LEASE & SALE

6 & 10 TERRACE CT
MADISON, WI

LOCATED IN

TAC
THE AMERICAN
CENTER

EXCLUSIVELY REPRESENTED BY

CHUCK REDJINSKI

608.575.1419

chuck.redjinski@ngkf.com

4602 S Biltmore Ln, Suite 117
Madison, WI 53718

 **Newmark
Knight Frank**
ngkf.com



The information contained herein has been obtained from sources deemed reliable but has not been verified and no guarantee, warranty or representation, either express or implied, is made with respect to such information. Terms of sale or lease and availability are subject to change or withdrawal without notice. Prospective Buyer/Tenant is hereby advised that Newmark Knight Frank is acting solely as an agent of Owner and may receive a commission in connection with the sale or lease of the Property.

FOR LEASE & SALE

6 & 10 TERRACE CT
MADISON, WI

EXECUTIVE SUMMARY

EXCLUSIVELY
REPRESENTED BY
CHUCK REDJINSKI
608.575.1419
chuck.redjinski@ngkf.com

Property Details

- Building Size: $\pm 154,163$
- Stories: 5 + Lower Level
- Lot Size: ± 10.84 (2 parcels)
- Year Built: 2001
- Parking:
 - ± 525 (3.41:1,000) Surface
 - +35 spots underground

Property Features

- Suburban Class A
- $\pm 26,000$ SF Floor Plates
- Exceptional visibility from Interstate 39/90/94 and Highway 151
- 4 acres of land for future expansion
- Located in The American Center Business Park

Lease Rate: \$16.00/SF NNN

Sale Price: \$19,900,000



FOR LEASE & SALE

6 & 10 TERRACE CT
MADISON, WI

10 Terrace Ct., Madison, WI

- Tax ID: 081022201024
- 2019 Taxes: \$359,463.17
- Building Size: ±154,163 SF
- Lot Size: ±5.49 Acres

6 Terrace Ct., Madison, WI

- Tax ID: 081022307020
- 2019 Taxes: \$31,561.67
- Lot Size: ±5.35 Acres

PROPERTY OVERVIEW

EXCLUSIVELY
REPRESENTED BY
CHUCK REDJINSKI
608.575.1419
chuck.redjinski@ngkf.com

Building Features

- 14+ feet floor to deckheight
- 10 foot ceiling height in office spaces
- Professionally landscaped
- Sound deadening glass on east and south facing windows
- 24 hour key card access
- Low flow faucets and toilets
- Multiple high-speed fiber providers
- VAV HVAC designed to exceed ASHRAE standards
- All HAVC is controlled by a direct digital control system



FOR LEASE & SALE

6 & 10 TERRACE CT
MADISON, WI

LOCATION OVERVIEW

EXCLUSIVELY
REPRESENTED BY
CHUCK REDJINSKI
608.575.1419
chuck.redjinski@ngkf.com

The American Center

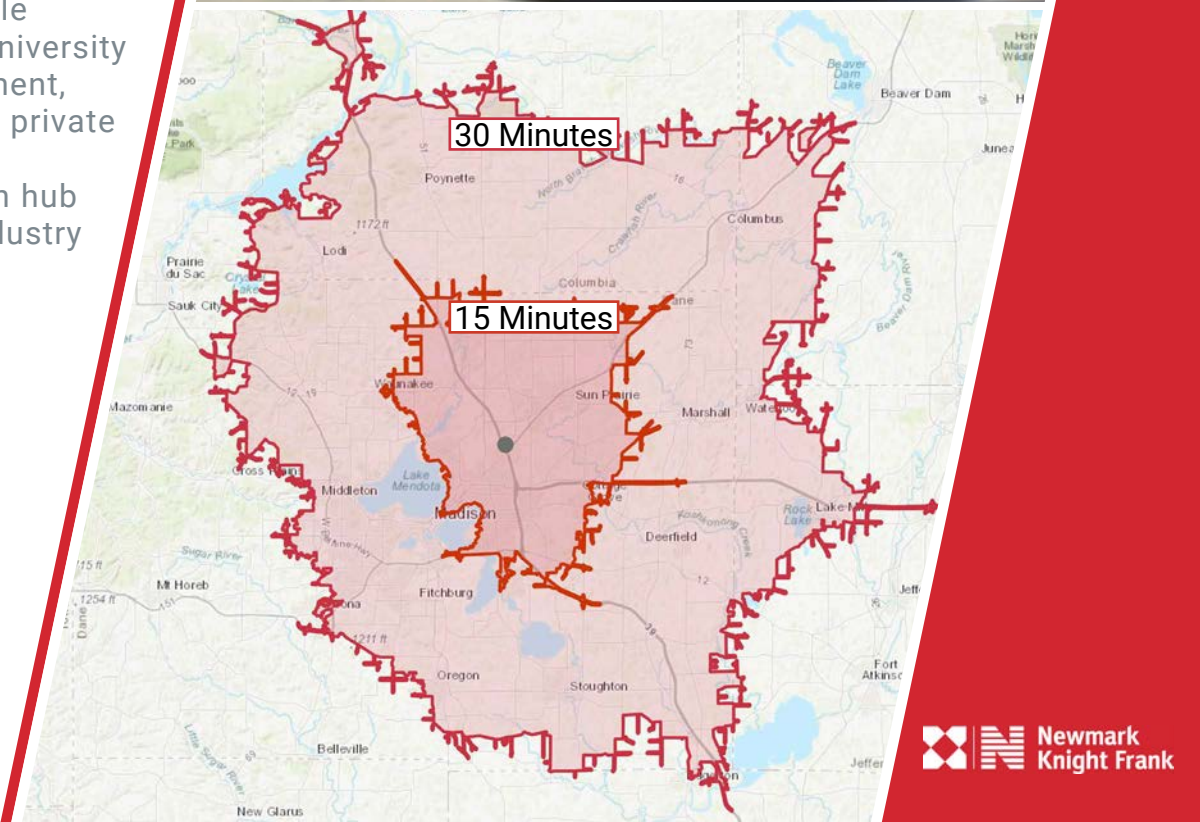
- Located in The American Center Business Park which combines excellent accessibility with state-of-the-art infrastructures, new urbanism design and beautiful streetscaping
- Extensive green space, curated walkways and unparalleled visibility from multiple major interstates.
- Home to American Family Mutual Insurance Corporate Headquarters, Alliant Energy, Fairway Mortgage, UW Health Hospital and Rehabilitation, Baker Tilly and many others

Madison, WI

- Predominant urban center in south central Wisconsin, providing a livable, innovative, vibrant, and stable economy anchored by the University of Wisconsin, State government, and a strong and diversified private employment base
- Also known as an innovation hub the city is home to many industry leaders in the medical and technology sectors

Demographics

- 15 / 30 Minute Population
175,917 / 537,313
- 15 / 30 Minute Daytime Population
112,729 / 389,226
- 15 / 30 Minute Avg HH Income
\$87,876 / \$94,807



FOR LEASE & SALE

6 & 10 TERRACE CT
MADISON, WI

LOCATION OVERVIEW

EXCLUSIVELY
REPRESENTED BY
CHUCK REDJINSKI
608.575.1419
chuck.redjinski@ngkf.com

6 & 10 Terrace Court



Proposed
UW medical
campus



FOR LEASE & SALE

6 & 10 TERRACE CT
MADISON, WI

BUILDING PHOTOS

EXCLUSIVELY
REPRESENTED BY
CHUCK REDJINSKI
608.575.1419
chuck.redjinski@ngkf.com



FOR LEASE & SALE

6 & 10 TERRACE CT
MADISON, WI

BUILDING PHOTOS

EXCLUSIVELY
REPRESENTED BY
CHUCK REDJINSKI
608.575.1419
chuck.redjinski@ngkf.com



FOR LEASE & SALE

6 & 10 TERRACE CT
MADISON, WI

BUILDING PHOTOS

EXCLUSIVELY
REPRESENTED BY
CHUCK REDJINSKI
608.575.1419
chuck.redjinski@ngkf.com



FOR LEASE & SALE

6 & 10 TERRACE CT
MADISON, WI

BUILDING PHOTOS

EXCLUSIVELY
REPRESENTED BY
CHUCK REDJINSKI
608.575.1419
chuck.redjinski@ngkf.com



FOR LEASE & SALE

6 & 10 TERRACE CT
MADISON, WI

BUILDING PHOTOS

EXCLUSIVELY
REPRESENTED BY
CHUCK REDJINSKI
608.575.1419
chuck.redjinski@ngkf.com



FOR LEASE & SALE

6 & 10 TERRACE CT
MADISON, WI

BUILDING PHOTOS

EXCLUSIVELY
REPRESENTED BY
CHUCK REDJINSKI
608.575.1419
chuck.redjinski@ngkf.com



FOR LEASE & SALE

6 & 10 TERRACE CT
MADISON, WI

BUILDING PHOTOS

EXCLUSIVELY
REPRESENTED BY
CHUCK REDJINSKI
608.575.1419
chuck.redjinski@ngkf.com



FOR LEASE & SALE

6 & 10 TERRACE CT
MADISON, WI

BUILDING FLOOR PLANS

EXCLUSIVELY
REPRESENTED BY
CHUCK REDJINSKI
608.575.1419
chuck.redjinski@ngkf.com



1st Floor Plan

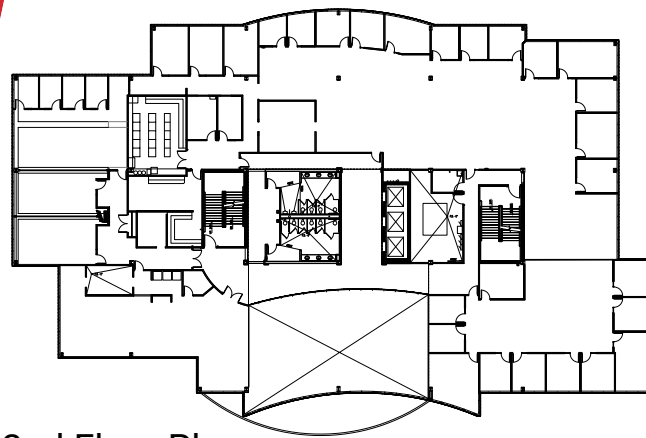
FOR LEASE & SALE

6 & 10 TERRACE CT
MADISON, WI

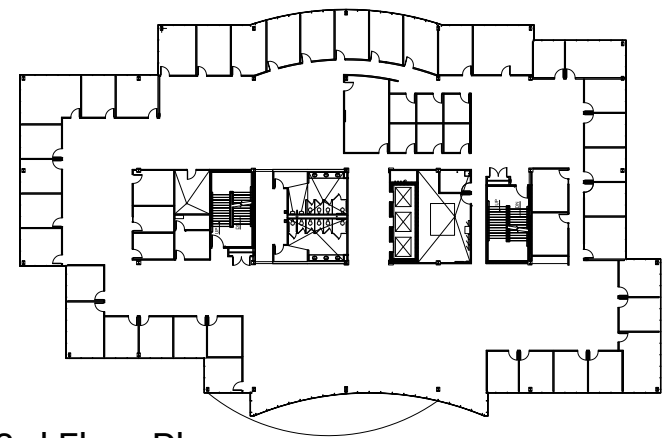
BUILDING FLOOR PLANS

EXCLUSIVELY
REPRESENTED BY

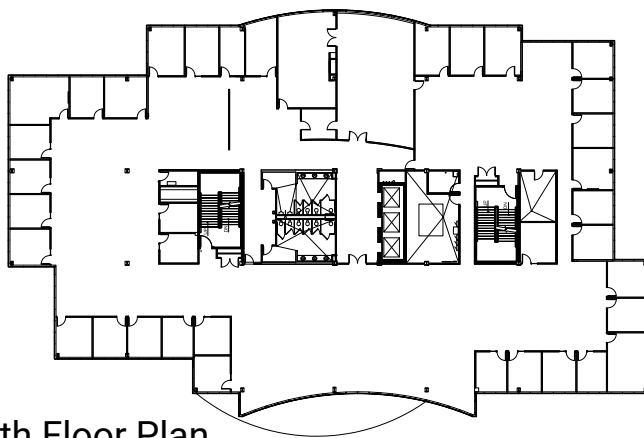
CHUCK REDJINSKI
608.575.1419
chuck.redjinski@ngkf.com



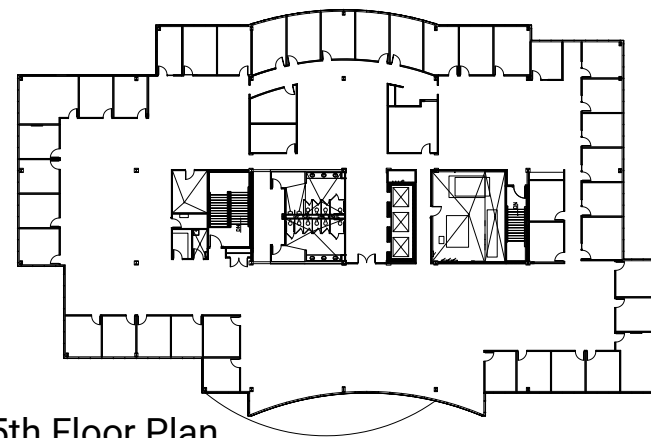
2nd Floor Plan



3rd Floor Plan



4th Floor Plan



5th Floor Plan

STATE OF WISCONSIN BROKER DISCLOSURE TO NON-RESIDENTIAL CUSTOMERS

Prior to negotiating on your behalf the brokerage firm, or an agent associated with the firm, must provide you the following disclosure statement.

BROKER DISCLOSURE TO CUSTOMERS

You are the customer of the brokerage firm (hereinafter Firm). The Firm is either an agent of another party in the transaction or a subagent of another firm that is the agent of another party in the transaction. A broker or a salesperson acting on behalf of the Firm, may provide brokerage services to you. Whenever the Firm is providing brokerage services to you, the Firm and its brokers and salespersons (hereinafter Agents) owe you, the customer, the following duties:

- The duty to provide brokerage services to you fairly and honestly.
- The duty to exercise reasonable skill and care in providing brokerage services to you.
- The duty to provide you with accurate information about market conditions within a reasonable time if you request it, unless disclosure of the information is prohibited by law.
- The duty to disclose to you in writing certain Material Adverse Facts about a property, unless disclosure of the information is prohibited by law (see “Definition of Material Adverse Facts” below).
- The duty to protect your confidentiality. Unless the law requires it, the Firm and its Agents will not disclose your confidential information or the confidential information of other parties (see “Confidentiality Notice To Customers” below).
- The duty to safeguard trust funds and other property held by the Firm or its Agents.
- The duty, when negotiating, to present contract proposals in an objective and unbiased manner and disclose the advantages and disadvantages of the proposals.

Please review this information carefully. An agent of the Firm can answer your questions about brokerage services, but if you need legal advice, tax advice, or a professional property inspection, contact an attorney, tax advisor, or property inspector.

This disclosure is required by section 452.135 of the Wisconsin statutes and is for information only. It is a plain-language summary of a broker’s duties to a customer under section 452.133 (1) of the Wisconsin statutes.

CONFIDENTIALITY NOTICE TO CUSTOMERS

The Firm and its Agents will keep confidential any information given to the Firm or its Agents in confidence, or any information obtained by the Firm or its Agents that a reasonable person would want to be kept confidential, unless the information must be disclosed by law or you authorize the Firm to disclose particular information. The Firm and its Agents shall continue to keep the information confidential after the Firm is no longer providing brokerage services to you.

The following information is required to be disclosed by law:

1. Material Adverse Facts, as defined in section 452.01 (5g) of the Wisconsin statutes (see “definition of material adverse facts” below).

Wisconsin law requires all real estate licensees to give the following information about brokerage services to prospective customers.

2. Any facts known by the Firm or its Agents that contradict any information included in a written inspection report on the property or real estate that is the subject of the transaction.

To ensure that the Firm and its Agents is aware of what specific information you consider confidential, you may list that information below or provide that information to the Firm or its Agents by other means. At a later time, you may also provide the Firm or its Agents with other information that you consider to be confidential.

CONFIDENTIAL INFORMATION:_____

NON-CONFIDENTIAL INFORMATION (The following information may be disclosed by the Firm and its Agents):

(INSERT INFORMATION YOU AUTHORIZE TO BE DISCLOSED SUCH AS FINANCIAL QUALIFICATION INFORMATION)

SEX OFFENDER REGISTRY

Notice: You may obtain information about the sex offender registry and persons registered with the registry by contacting the Wisconsin Department of Corrections on the Internet at <http://www.doc.wi.gov/> or by phone at 608-240-5830.

DEFINITION OF MATERIAL ADVERSE FACTS

A “Material Adverse Fact” is defined in Wis. Stat. 452.01 (5g) as an adverse fact that a party indicates is of such significance, or that is generally recognized by a competent licensee as being of such significance to a reasonable party, that it affects or would affect the party’s decision to enter into a contract or agreement concerning a transaction or affects or would affect the party’s decision about the terms of such a contract or agreement.

An “Adverse Fact” is defined in Wis. Stat. 452.01 (1e) as a condition or occurrence that a competent licensee generally recognizes will significantly and adversely affect the value of the property, significantly reduce the structural integrity of improvements to real estate, or present a significant health risk to occupants of the property; or information that indicates that a party to a transaction is not able to or does not intend to meet his or her obligations under a contract or agreement made concerning the transaction.

No representation is made as to the legal validity of any provision or the adequacy of any provision on any specific transaction.

