



OLD SAUK TRAILS PARK

1232 Fourier Drive, Madison, WI

PROPERTY	1232 Fourier Drive is a 30,005-square foot building located on the west side of Madison in the Old Sauk Trails Office Park. This property features thoughtful landscaping and a natural light filled two-story atrium lobby.
LOCATION	Close to the West Beltline Highway, the building is easily accessible to employees and clients. Located off Old Sauk Trail in a beautiful natural setting.
AMENITIES	Two-story atrium, fiber optics, security card access, break room, large surface parking lot and access to all conference rooms, board rooms and no-fee fitness centers in the Artis properties portfolio. Artis REIT delivers first class property management with on-site maintenance and 24/7 emergency maintenance services.



Artis REIT Madison Office
8215 Greenway Blvd, Suite 160
Middleton, WI 53562
P.O. Box 7700
Madison, WI 53707
madison.artisreit.com

Kyle Robb, CCIM
Leasing Manager

608.830.6308
krobb@artisreit.com

Leon R. Wilkosz, CCIM, RPA®
Senior Vice-President
Asset Management - Madison
608.830.6302
lwilkosz@artisreit.com



BUILDING OVERVIEW

1232 Fourier Drive, Madison, WI

BUILDING DESCRIPTION

1232 Fourier Drive is a one-story, 30,005 square foot Class-B building located on the westside of Madison in the Old Sauk Trails office park. This property features plenty of free surface parking and a brilliant two-story atrium lobby.

BUILDING HOURS

700 a.m. - 6:00 p.m. M-F

SIGNAGE

Monument & building signage available

STORIES

1

PARKING

3.33/1000
100 Stalls

HVAC SYSTEM

Rooftop cool/heat

SECURITY FEATURES

Key card access

TELEPHONE/CABLE/INTERNET PROVIDERS

TDS Metrocom/Charter Communications/Globalcom Technologies



Artis REIT Madison Office
8215 Greenway Blvd, Suite 160
Middleton, WI 53562
P.O. Box 7700
Madison, WI 53707
madison.artisreit.com

Kyle Robb, CCIM
Leasing Manager

608.830.6308
krobb@artisreit.com

Leon R. Wilkosz, CCIM, RPA®
Senior Vice-President
Asset Management - Madison
608.830.6302
lwilkosz@artisreit.com



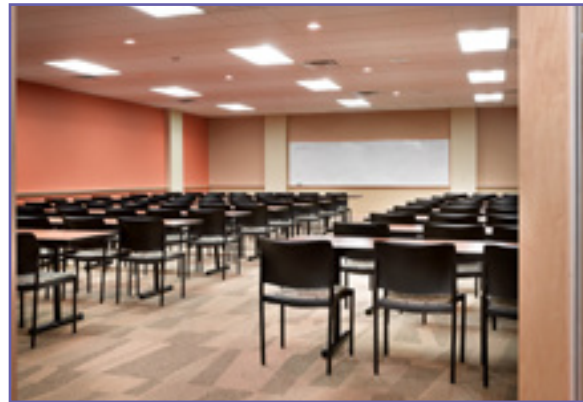
BUILDING AMENITIES

1232 Fourier Drive, Madison, WI

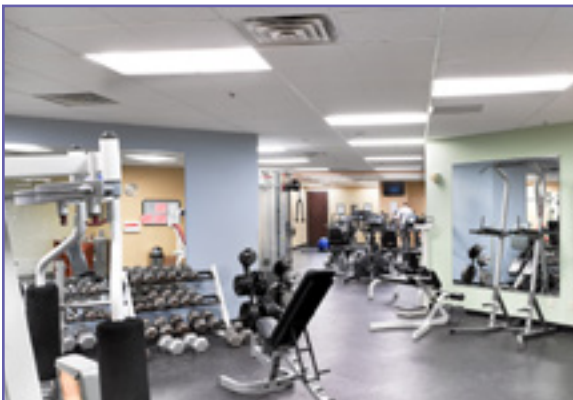
Bright Open Lobby



Access to Conference Room at 8401 Greenway



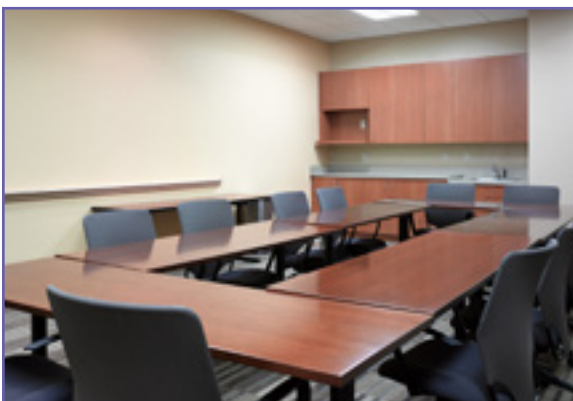
Access to Fitness Center at 8401 Greenway



Access to Lounge at 8215 Greenway



Access to Board Room at 8401 Greenway

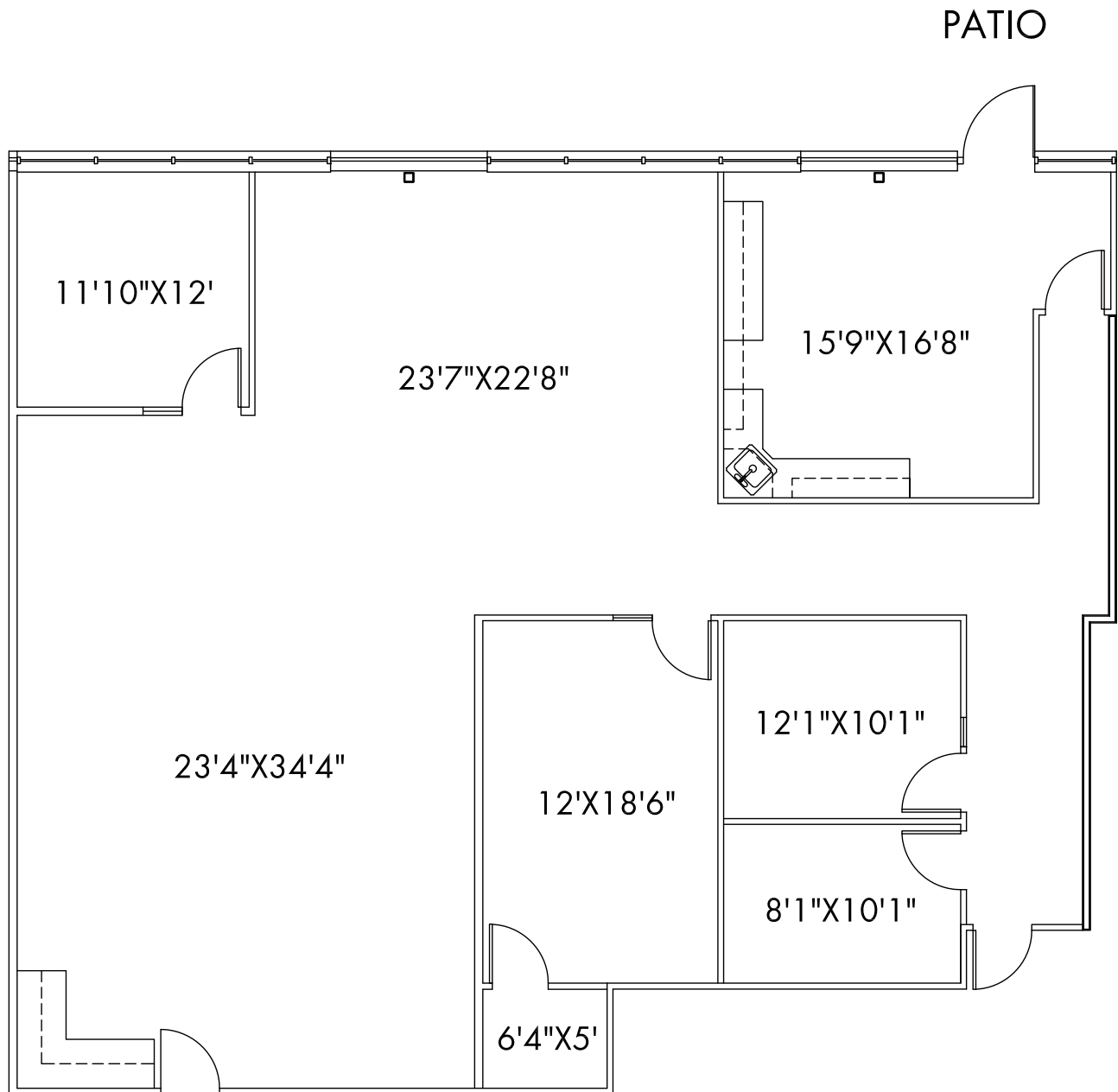


Aerial View



AVAILABLE SUITES | FIRST FLOOR

1232 Fourier Drive, Madison, WI

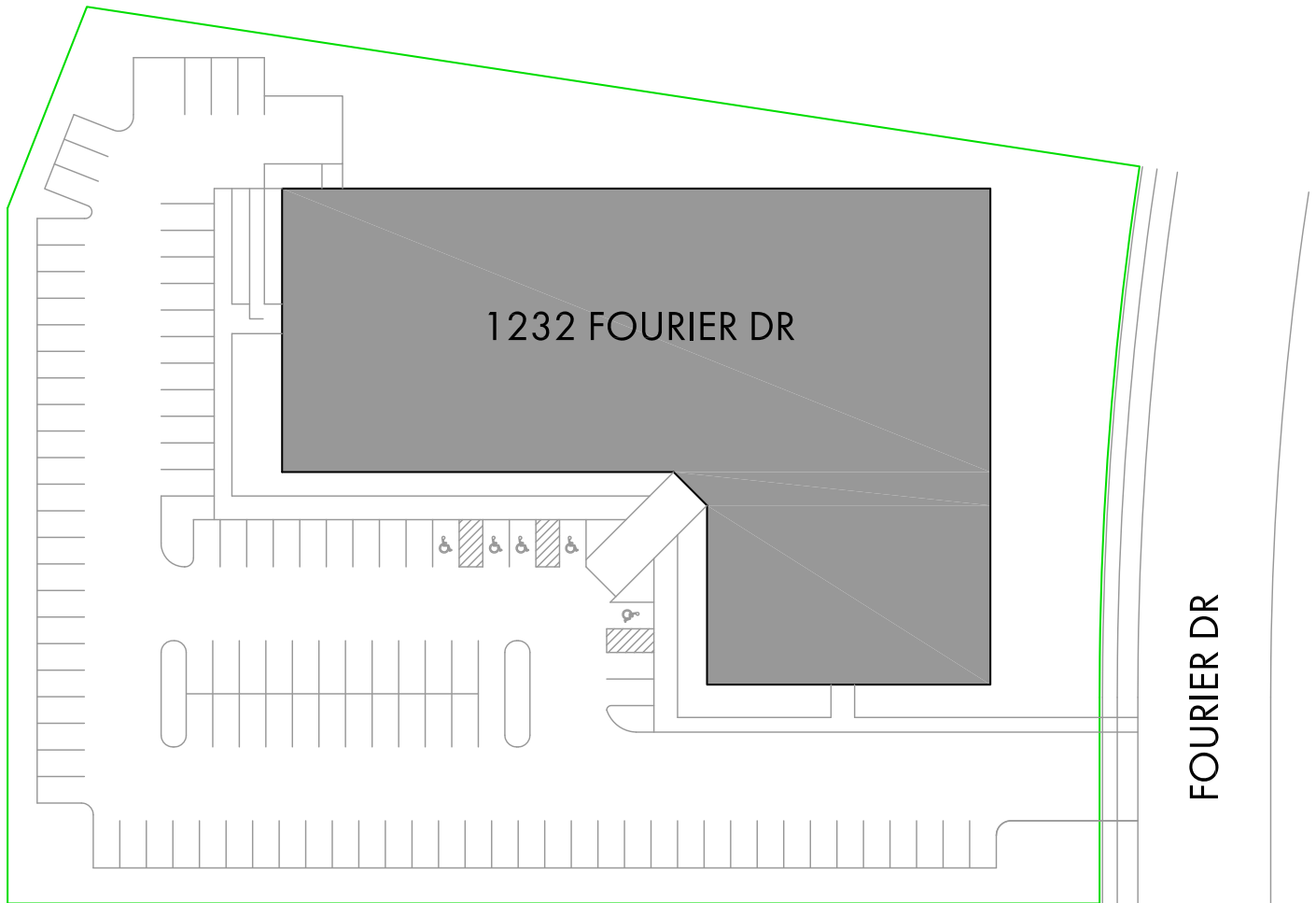


SUITE 115 - 2,819 RSF
1232 FOURIER DRIVE



SITE PLAN

1232 Fourier Drive, Madison, WI



Artis REIT Madison Office
8215 Greenway Blvd, Suite 160
Middleton, WI 53562
P.O. Box 7700
Madison, WI 53707
madison.artisreit.com

Kyle Robb, CCIM
Leasing Manager

608.830.6308
krobb@artisreit.com

Leon R. Wilkosz, CCIM, RPA®
Senior Vice-President
Asset Management - Madison
608.830.6302
lwilkosz@artisreit.com

LOCATION MAP

1232 Fourier Drive, Madison, WI

