

4476 Robertson Road
Madison, Wisconsin 53714



PROPERTY PROFILE

Asking Price	\$595,000
Building Size	10,488 SF
Parcel Size	1.1 acres
Year Built	1991
Zoned	IL (Industrial Limited)
Lease Rate	\$12.00/SF Modified Gross

Plus utilities, in-suite janitorial and interior maintenance

PROPERTY HIGHLIGHTS

- Over \$130,000 in recent building improvements including an added restroom, updated reception area, updated kitchen/break room, new flooring, parking lot seal & stripe, and so on.
- Two story building. Floor plan includes a front lobby and reception area, 17 private offices, 4 conference rooms, a breakroom, three restrooms, a copy area, and 2,200 SF of unfinished lower level storage area which could be converted into additional office space
- Loading ramp at the rear of the building for deliveries/shipping
- 26 marked parking stalls with the potential to expand the parking lot along the east edge of the property; additional parking along the driveway, and on the street
- Security system with key fob building entry access; Cat 5e cabling throughout
- Easily accessible from Hwy 51/Stoughton Road, convenient access to downtown Madison; 2 miles off the Beltline and the Interstate highways.
- Some furniture may be included in the sale or lease; negotiable on a case-by-case basis



PLEASE CONTACT

Katie West
Commercial Real Estate Broker
608-443-1023
kwest@oakbrookcorp.com

Chris Caulum, CCIM, SIOR
Vice President
608-443-1040
ccaalum@oakbrookcorp.com





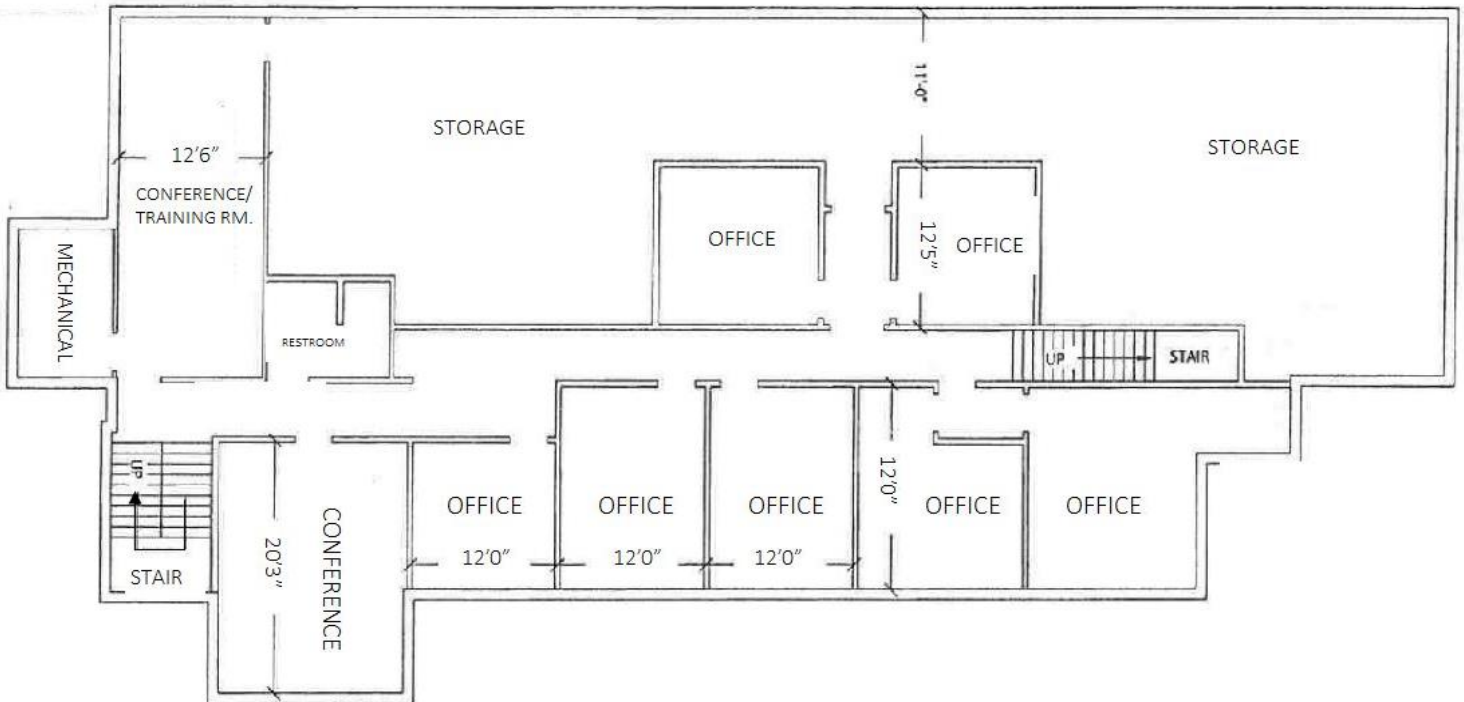
ADDITIONAL INFORMATION

\$133,000 in recent updates made to the building (2018). *Updates include:* Updated reception area, addition of a bathroom, new coffee bar, new A/C unit for server room, updated break room/kitchen area, new flooring, new paint, new blinds, parking lot seal & stripe.



Floor Plans

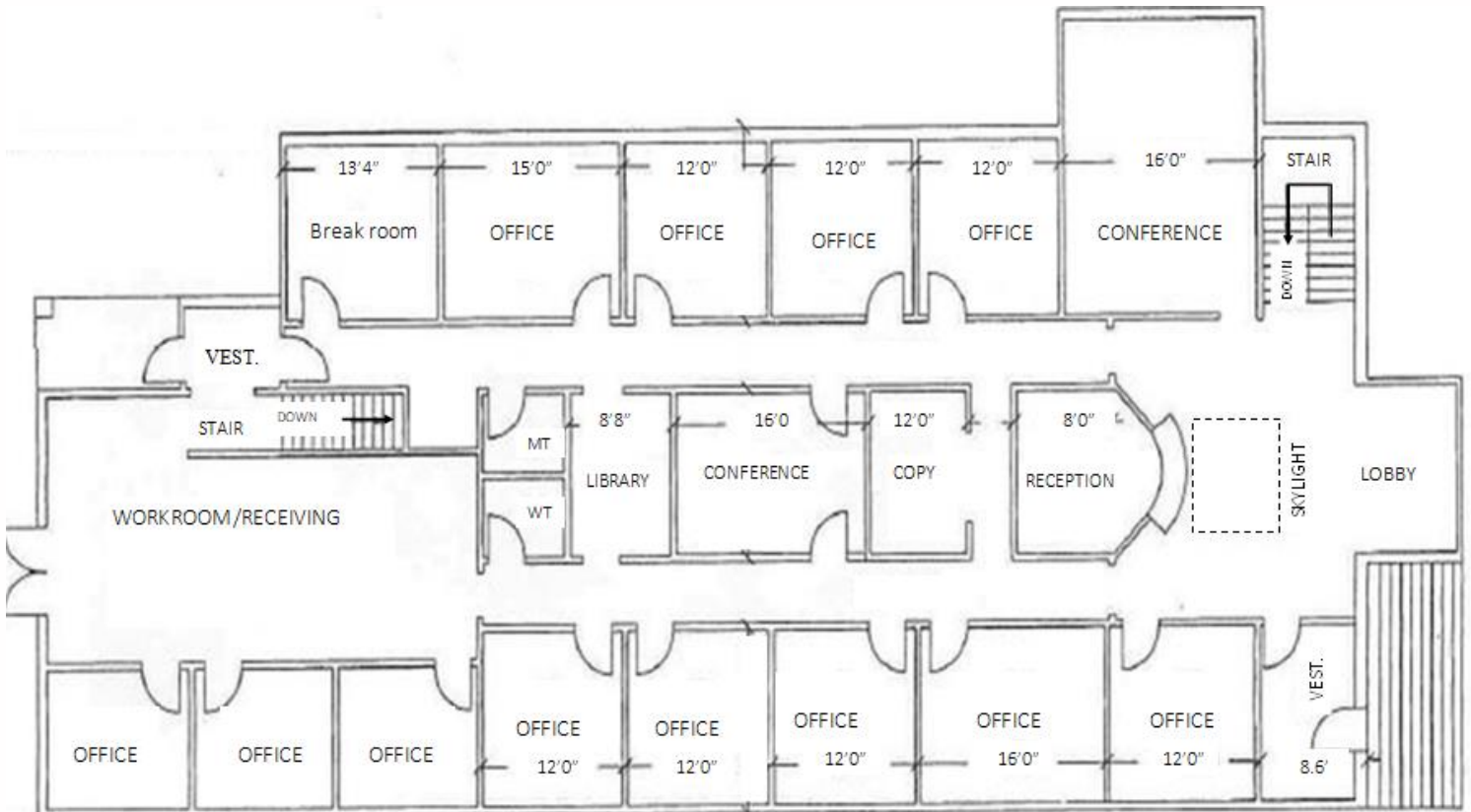
Lower/Garden Level – 5,122 SF



OFFICE SPACE

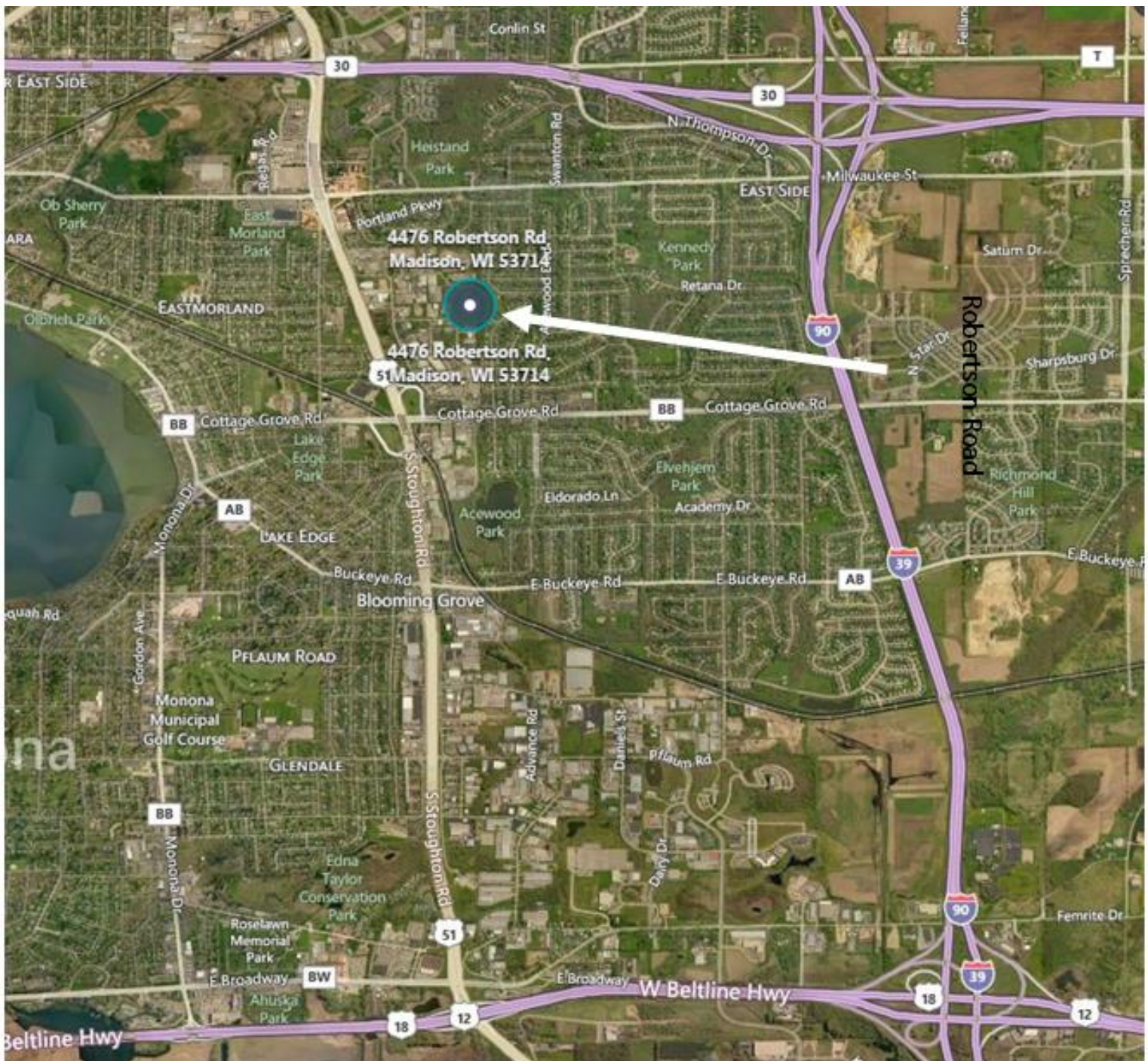
4476 Robertson Road
Madison, Wisconsin 53714

First Floor – 5,122 SF



OFFICE SPACE

4476 Robertson Road
Madison, Wisconsin 53714



On Madison's east side off Stoughton Road, just minutes from the Beltline and Interstate highways

OFFICE SPACE

4476 Robertson Road
Madison, Wisconsin 53714

DISCLOSURE TO NON-RESIDENTIAL CUSTOMERS

1 Prior to negotiating on your behalf the brokerage firm, or an agent associated with the firm, must provide you the
2 following disclosure statement:

3 **DISCLOSURE TO CUSTOMERS** You are a customer of the brokerage firm (hereinafter Firm). The Firm is either an agent
4 of another party in the transaction or a subagent of another firm that is the agent of another party in the transaction. A
5 broker or a salesperson acting on behalf of the Firm may provide brokerage services to you. Whenever the Firm is
6 providing brokerage services to you, the Firm and its brokers and salespersons (hereinafter Agents) owe you, the
7 customer, the following duties:

8 (a) The duty to provide brokerage services to you fairly and honestly.

9 (b) The duty to exercise reasonable skill and care in providing brokerage services to you.

10 (c) The duty to provide you with accurate information about market conditions within a reasonable time if you request
11 it, unless disclosure of the information is prohibited by law.

12 (d) The duty to disclose to you in writing certain Material Adverse Facts about a property, unless disclosure of the
13 information is prohibited by law (see lines 42-51).

14 (e) The duty to protect your confidentiality. Unless the law requires it, the Firm and its Agents will not disclose your
15 confidential information or the confidential information of other parties (see lines 23-41).

16 (f) The duty to safeguard trust funds and other property held by the Firm or its Agents.

17 (g) The duty, when negotiating, to present contract proposals in an objective and unbiased manner and disclose the
18 advantages and disadvantages of the proposals.

19 Please review this information carefully. An Agent of the Firm can answer your questions about brokerage services,
20 but if you need legal advice, tax advice, or a professional home inspection, contact an attorney, tax advisor, or home
21 inspector. This disclosure is required by section 452.135 of the Wisconsin statutes and is for information only. It is a
22 plain-language summary of the duties owed to a customer under section 452.133(1) of the Wisconsin statutes.

23 **CONFIDENTIALITY NOTICE TO CUSTOMERS** The Firm and its Agents will keep confidential any information given to the
24 Firm or its Agents in confidence, or any information obtained by the Firm and its Agents that a reasonable person
25 would want to be kept confidential, unless the information must be disclosed by law or you authorize the Firm to
26 disclose particular information. The Firm and its Agents shall continue to keep the information confidential after the
27 Firm is no longer providing brokerage services to you.

28 The following information is required to be disclosed by law:

29 1. Material Adverse Facts, as defined in Wis. Stat. § 452.01(5g) (see lines 42-51).

30 2. Any facts known by the Firm or its Agents that contradict any information included in a written inspection
31 report on the property or real estate that is the subject of the transaction.

32 To ensure that the Firm and its Agents are aware of what specific information you consider confidential, you may
33 list that information below (see lines 35-41) or provide that information to the Firm or its Agents by other means. At a
34 later time, you may also provide the Firm or its Agents with other information you consider to be confidential.

35 **CONFIDENTIAL INFORMATION:** _____

36 _____

37 _____

38 **NON-CONFIDENTIAL INFORMATION** (the following information may be disclosed by the Firm and its Agents): _____

39 _____

40 _____

41 _____ (Insert information you authorize to be disclosed, such as financial qualification information.)

42 **DEFINITION OF MATERIAL ADVERSE FACTS**

43 A "Material Adverse Fact" is defined in Wis. Stat. § 452.01(5g) as an Adverse Fact that a party indicates is of such
44 significance, or that is generally recognized by a competent licensee as being of such significance to a reasonable
45 party, that it affects or would affect the party's decision to enter into a contract or agreement concerning a transaction
46 or affects or would affect the party's decision about the terms of such a contract or agreement.

47 An "Adverse Fact" is defined in Wis. Stat. § 452.01(1e) as a condition or occurrence that a competent licensee
48 generally recognizes will significantly and adversely affect the value of the property, significantly reduce the structural
49 integrity of improvements to real estate, or present a significant health risk to occupants of the property; or information
50 that indicates that a party to a transaction is not able to or does not intend to meet his or her obligations under a
51 contract or agreement made concerning the transaction.

52 **NOTICE ABOUT SEX OFFENDER REGISTRY** You may obtain information about the sex offender registry and persons
53 registered with the registry by contacting the Wisconsin Department of Corrections on the Internet at
54 <http://www.doc.wi.gov> or by telephone at 608-240-5830.

No representation is made as to the legal validity of any provision or the adequacy of any provision in any specific transaction.
Copyright © 2016 by Wisconsin REALTORS® Association Drafted by Attorney Debra Peterson Conrad