

FOR SALE OR LEASE

INDUSTRIAL/MANUFACTURING/ WAREHOUSE

555

BEICHL AVENUE

Beaver Dam, WI 53915



CONTACT US

SCOTT FURMANSKI

Senior Vice President
D +1 414 274 1613
scott.furmanski@cbre.com

CHASE BRIEMAN, CCIM

Senior Vice President
D +1 608 441 7571
chase.brieman@cbre.com

© 2020 CBRE, Inc. All rights reserved. This information has been obtained from sources believed reliable, but has not been verified for accuracy or completeness. You should conduct a careful, independent investigation of the property and verify all information. Any reliance on this information is solely at your own risk. CBRE and the CBRE logo are service marks of CBRE, Inc. All other marks displayed on this document are the property of their respective owners. Photos herein are the property of their respective owners. Use of these images without the express written consent of the owner is prohibited.

www.cbre.us/madison

CBRE

FOR SALE OR LEASE WAREHOUSE/LIGHT MANUFACTURING

555
BEICHL AVENUE
Beaver Dam, WI 53915



PROPERTY OVERVIEW

- + Building Size: ±172,000 SF (with significant expansion potential)
 - Approximately 29,000 SF - Office (North Mezzanine Level)
 - Approximately 133,000 SF - Warehouse/ Production (Ground Floor)
 - Approximately 10,000 SF - Storage/ Mechanical (South Mezzanine Level)
- + Asking Price: \$8,400,000
- + Base Rent: \$4.35/SF/Year, NNN
- + OpEx: All operating expenses by Tenant
- + Taxes (2019): \$88,878 (= \$0.52/SF)
- + Utilities: By Tenant
- + Zoning: G3 (Manufacturing)
- + Year Built: 1989, 1994 and 2000
- + Clear Height: ± 24' - 26'
- + Office Height: ± 13' - 14'; modern open ceiling, spiral ductwork, painted white
- + Column Spacing: Typically 50'x40', one bay is 80' wide x 280' long
- + Construction Type: 12' precast concrete panels with significant glass on front, some metal expansion wall panels
- + Mezzanine Construction: Concrete plank with poured concrete overlay
- + Roof: Ballasted rubber membrane; skylights in many areas, including office
- + HVAC: Entire building heated and cooled, controlled with Trane Tracer Summit BAS system
 - Two (2) 60 ton (Trane)
 - One (1) 50 ton (Trane)
 - One (1) 40 ton (York)
 - One (1) 20 ton (Trane)
 - Five (5) 10 ton (Trane)
 - One (1) 7.5 ton (Trane)
 - One (1) 5 ton (Trane)
 - One (1) 5 ton (York)
- + Lighting: T-8 fluorescent tube
- + Passenger Elevator: Yes
- + Power: Two (2) 4000 Amp, 480v/277, 3-Phase Services
- + Fire Protection: Wet system
- + Loading Docks: Ten (10), with levelers, locks and shelters
- + Drive-in Doors: Three (3) - (1) 12'x14', (1) 12'x12', and (1) 12'x9'
- + Water/Sewer: Yes (Municipal)
- + Parking: 160+ (Plenty of expansion potential)
- + Trailer Parking: Ample space for trailer parking
- + Parcel Size: Approximately 12 acres included, additional 8 acres to east retained by Seller/Landlord
- + Signage: Signage opportunity facing Hwy 151
- + Rail: Wisconsin & Southern Railroad along south property line, but no existing spur to site



CONTACT US

SCOTT FURMANSKI

Senior Vice President
D +1 414 274 1613
scott.furmanski@cbre.com

CHASE BRIEMAN, CCIM

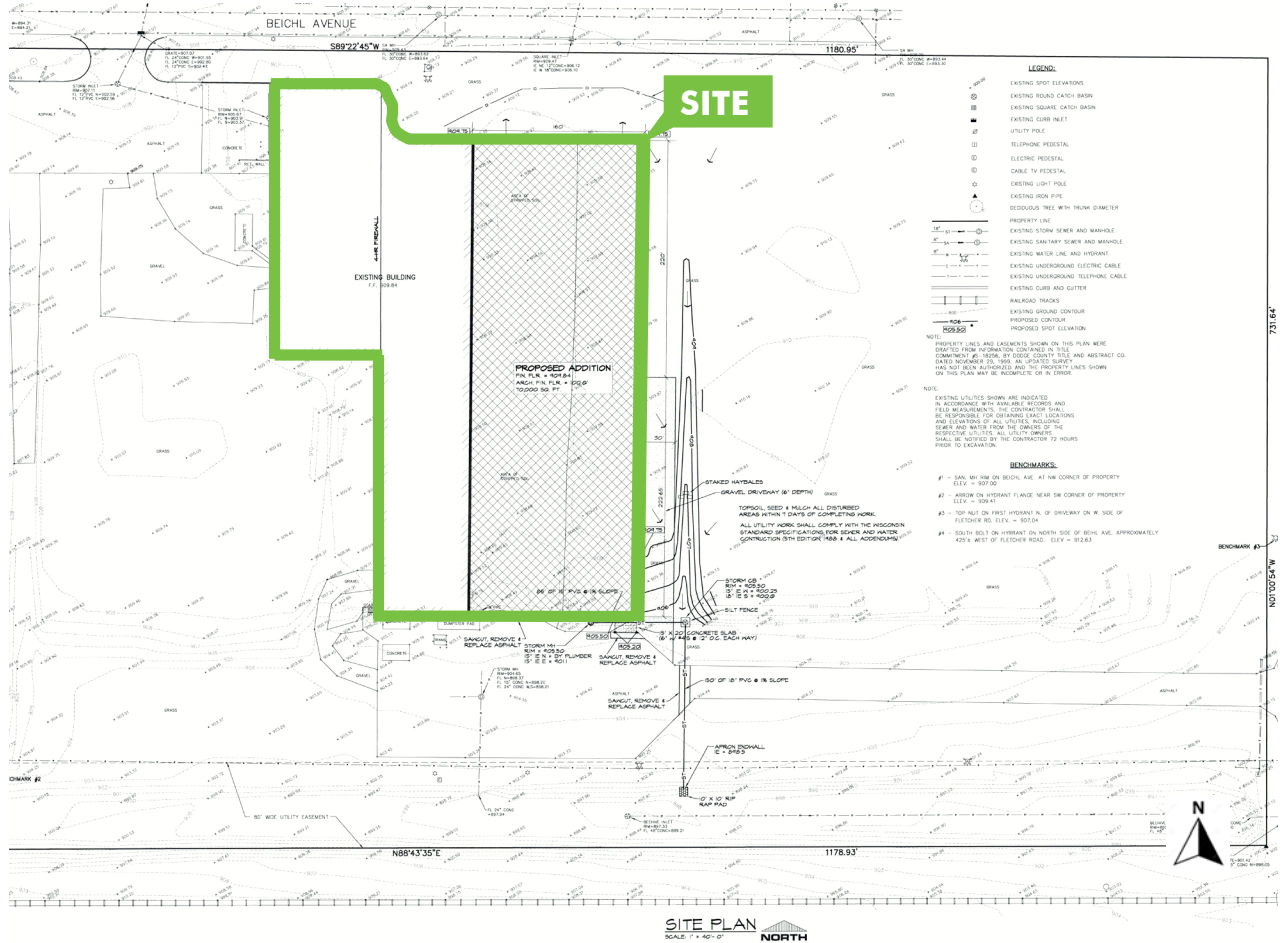
Senior Vice President
D +1 608 441 7571
chase.brieman@cbre.com

FOR SALE OR LEASE WAREHOUSE/LIGHT MANUFACTURING

**555
BEICHL AVENUE**
Beaver Dam, WI 53915



SITE PLAN



CONTACT US

SCOTT FURMANSKI

Senior Vice President
D +1 414 274 1613
scott.furmanski@cbre.com

CHASE BRIEMAN, CCIM

Senior Vice President
D +1 608 441 7571
chase.brieman@cbre.com

FOR SALE OR LEASE WAREHOUSE/LIGHT MANUFACTURING

555
BEICHL AVENUE
Beaver Dam, WI 53915



PARCEL MAP



CONTACT US

SCOTT FURMANSKI

Senior Vice President
D +1 414 274 1613
scott.furmanski@cbre.com

CHASE BRIEMAN, CCIM

Senior Vice President
D +1 608 441 7571
chase.brieman@cbre.com

© 2020 CBRE, Inc. All rights reserved. This information has been obtained from sources believed reliable, but has not been verified for accuracy or completeness. You should conduct a careful, independent investigation of the property and verify all information. Any reliance on this information is solely at your own risk. CBRE and the CBRE logo are service marks of CBRE, Inc. All other marks displayed on this document are the property of their respective owners. Photos herein are the property of their respective owners. Use of these images without the express written consent of the owner is prohibited.

www.cbre.us/madison

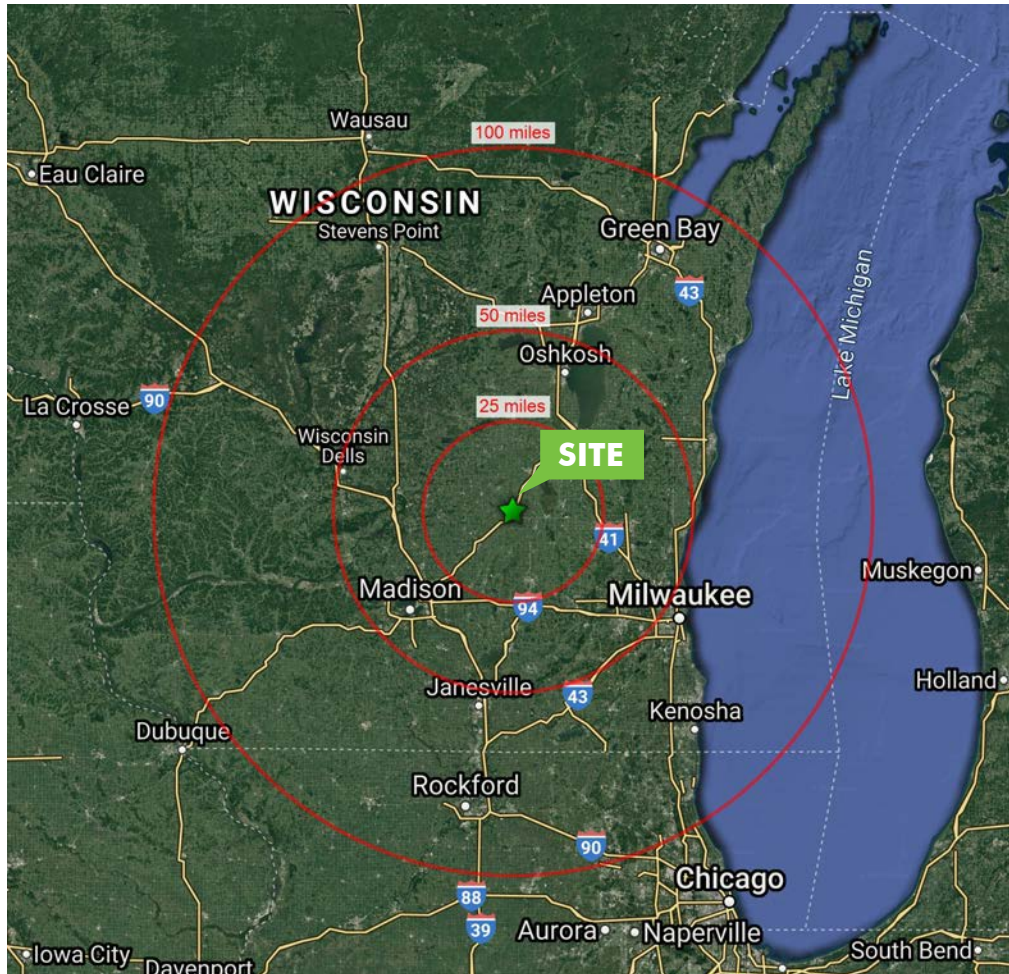
CBRE

FOR SALE OR LEASE WAREHOUSE/LIGHT MANUFACTURING

555
BEICHL AVENUE
Beaver Dam, WI 53915



LOCATION MAP



DRIVING DISTANCES

Driving Distance to:	
Madison, WI	44 miles
Green Bay, WI	116 miles
Chicago, IL	154 miles

FOR SALE OR LEASE WAREHOUSE/LIGHT MANUFACTURING

**555
BEICHL AVENUE**
Beaver Dam, WI 53915



LOCATION MAP



AREA DEMOGRAPHICS

Area Demographics	5 Miles	10 Miles	15 Miles
Population	22,203	35,989	35,989
Median Age	41.5	42.4	41.2
Average Household Income	\$72,328	\$74,586	\$75,408

FOR SALE OR LEASE
WAREHOUSE/LIGHT MANUFACTURING

555
BEICHL AVENUE
Beaver Dam, WI 53915



ADDITIONAL PHOTOS



STATE OF WISCONSIN BROKER DISCLOSURE

To Non-Residential Customers

Wisconsin Law requires all real estate licensees to give the following information about brokerage services to prospective customers.

Prior to negotiating on your behalf the Broker must provide you the following disclosure statement:

BROKER DISCLOSURE TO CUSTOMERS

You are the customer of the broker. The broker is either an agent of another party in the transaction or a subagent of another broker who is the agent of another party in the transaction. The broker, or a salesperson acting on the behalf of the broker, may provide brokerage services to you. Whenever the broker is providing brokerage services to you, the broker owes you, the customer the following duties:

- The duty to prove brokerage services to you fairly and honestly.
- The duty to exercise reasonable skill and care in providing brokerage services to you.
- The duty to provide you with accurate information about market conditions within a reasonable time if you request it, unless disclosure of the information is prohibited by law.
- The duty to disclose to you in writing certain material adverse facts about a property, unless disclosure of the information is prohibited by law (see "Definition of Material Adverse Facts" below).
- The duty to protect your confidentiality. Unless the law requires it, the broker will not disclose your confidential information of other parties.
- The duty to safeguard trust funds and other property the broker holds.
- The duty, when negotiating, to present contract proposals in an objective and unbiased manner and disclose the advantages and disadvantages of the proposals.

Please review this information carefully. A broker or salesperson can answer your questions about brokerage services, but if you need legal advice, tax advice, or a professional home inspection, contact an attorney, tax advisor, or home inspector. This disclosure is required by section 452.135 of the Wisconsin Statutes and is for information only. It is a plain language summary of a broker's duties to a customer under section 452.133(l) of the Wisconsin Statutes.

CONFIDENTIALITY NOTICE TO CUSTOMERS

Broker will keep confidential any information given to broker in confidence, or any information obtained by broker that he or she knows a reasonable person would want to be kept confidential by law, or authorize the broker to disclose particular information. A broker shall continue to keep the information confidential after broker is no longer providing brokerage services to you.

The following information is required to be disclosed by law.

1. Material adverse facts, as defined in section 452.01(5g) of the Wisconsin statutes (see "definition of material adverse facts" below).
2. Any facts known by the broker that contradict any information included in a written inspection report on the property or real estate that is the subject of the transaction. To ensure that the broker is aware of what specific information below. At a later time, you may also provide the broker with other information that you consider to be confidential.

CONFIDENTIAL INFORMATION:

NON-CONFIDENTIAL INFORMATION (The following information may be disclosed by Broker):

(Insert information you authorize to broker to disclose such as financial qualification information)

CONSENT TO TELEPHONE SOLICITATION

I/We agree that the Broker and any affiliated settlement service providers (for example, a mortgage company or title company) may call our/my home or cell phone numbers regarding issues, goods and services related to the real estate transaction until I/we withdraw this consent in writing. List Home/Cell Numbers:

SEX OFFENDER REGISTRY

Notice: You may obtain information about the sex offender registry and persons registered with the registry by contacting the Wisconsin Department of Corrections on the internet at <http://offender.doc.state.wi.us/public/> or by phone at (608)240-5830.

DEFINITION OF MATERIAL ADVERSE FACTS

A "material adverse fact" is defined in Wis. Stat. 452.01 (5g) as an adverse fact that a party indicates is of such significance, or that is generally recognized by a competent licensee as being of such significance to a reasonable party that it affects or would affect the party's decision to enter into a contract or agreement concerning a transaction or affects or would affect the party's decision about the terms of such a contract or agreement. An "adverse fact" is defined in Wis. Stat. 452.01 (1e) as a condition or occurrence that a competent licensee generally recognizes will significantly adversely affect the value of the property, significantly reduce the structural integrity of improvements to real estate, or present a significant health risk to occupants of the property, or information that indicates that a party to a transaction is not able to or does not intend to meet his or her obligations under a contract or agreement made concerning the transaction.