



# Madison East Business Center

4602, 4610 & 4618 South Biltmore Lane and  
5202 Eastpark Boulevard

Madison, WI 53718

Madison East Business Center consists of four single story office buildings totaling 111,075 square feet designed within a campus-style setting. The center is located within American Center Business Park and is highly visible.



## Single-Story Office/Retail

### Single-Story Office/Retail Buildings

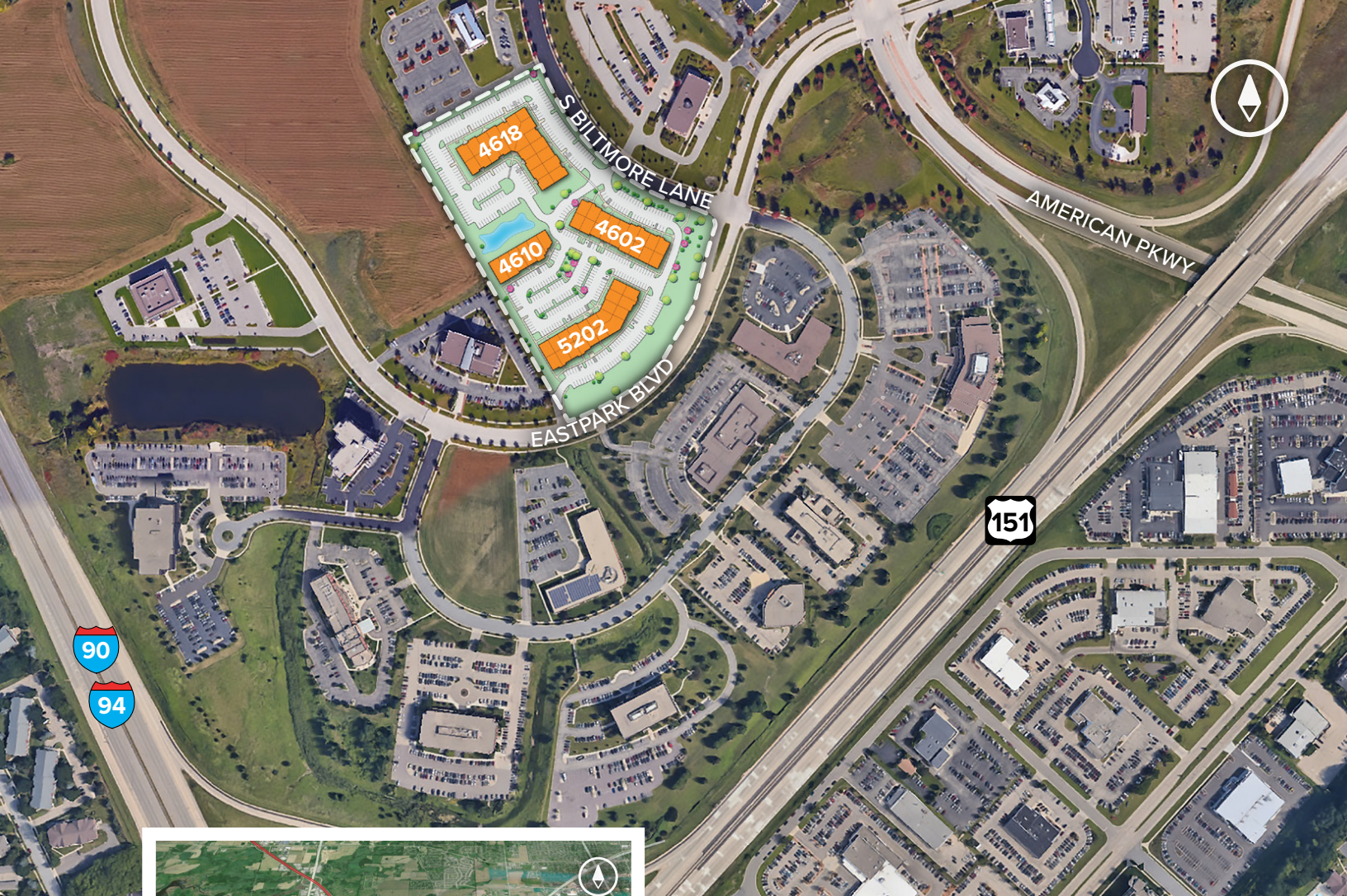
4602 South Biltmore Lane	26,950 SF
4610 South Biltmore Lane	14,310 SF
4618 South Biltmore Lane	39,290 SF
5202 Eastpark Boulevard	30,525 SF

### Single-Story Office/Retail Specifications

Parking	4.2 per 1,000 SF
Heat	Natural Gas
Roof	EPDM rubber
Exterior Walls	Masonry
Zoning	SEC







**For additional leasing information  
or to schedule a tour, contact:**

**Gregory Fax**  
Regional Partner, Wisconsin  
262.524.0100  
gfax@sjpi.com

### About St. John Properties

St. John Properties, Inc. is a full-service real estate company headquartered in Baltimore, Maryland. The company owns, manages and has developed more than 20 million square feet of commercial real estate, including office, flex/R&D, warehouse, retail and residential space.



1020 James Drive | Suite G  
Hartland, WI 53029

608.223.0100 | [SJPI.COM/WISCONSIN](http://SJPI.COM/WISCONSIN)  
MD | CO | LA | NV | PA | UT | VA | WI

Connect with us @stjohnprop

